

SURVEY & REMONUMENTATION

MAR 03 1998

LAND CORNER RECORDATION CERTIFICATE Filing Requirement of Act 74, Mich. P.A. 1970 KENT COUNTY REMONUMENTATION

For corners in

SECTION

Kent (County)	Located in:	Ada Township	Corner Code #
1. Public Land Survey	T <u>7N</u>	R <u>10W</u>	<u>K-5</u>
	T _____	R _____	_____
	T _____	R _____	_____
	T _____	R _____	_____
2. Property Controlling in Section	S _____	T _____	R _____
	S _____	T _____	R _____
3. Miscellaneous Property in Sec.	S _____	T _____	R _____
	S _____	T _____	R _____

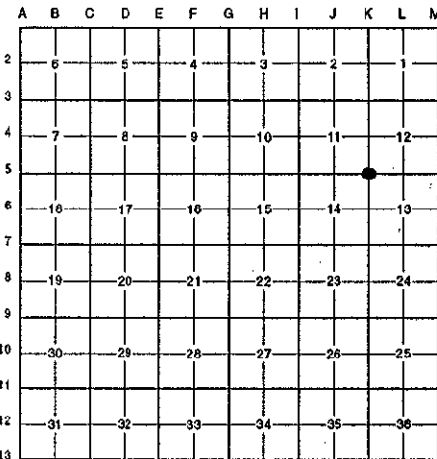
STATE OF MICHIGAN
COUNTY OF KENT
RECEIVED FOR RECORD
97 OCT 15 AM 8:52
REG. OF DEEDS
Lucy Bond

10232

Register of Deeds Stamp & File Number

4. Lot No. _____, Recorded Plat _____
5. Private Claims _____

I, Randy Kolehouse, in a field survey on May 29 19 97, do hereby certify that under requirements of P.A. 74 Michigan P.A. of 1970, the corner points mentioned in lines 1 and 2 above were in conformance with regulations and rules therefore as required in the current manual of survey instructions of the United States Department of the interior, Bureau of Land Management or by a decree of a Court of Law and/or that the corner points mentioned in lines 3, 4 and 5 above were in conformance with the rules of the Michigan Board of Land Surveyors or by a Decree of a Court of Law; established, re-established, monumented, re-monumented, recovered, found as expressed below:



NOTE: Not more than 4 corners, all in the same town and range, may be recorded on this certificate.

A. Description of original monument and accessories and/or subsequent restoration:

K-5	1831	G.L.O. Notes	Mullett	Set Post
	1961	Witness Map	K.C. Surveyor	Stone
	1973	L.C.R.C. #637	Exxel Engineering	1/2" Iron
	1981	L.C.R.C. #2503	C. Hay	Fnd. 1/2" Iron / Set K.C. Monument
	1994	L.C.R.C. #8088	Glaza & Associates	K.C. Monument

P.A. 345 1990 KENT COUNTY
PEER APPROVED 6/26/97
CHAIRMAN Harry Huber

This corner was originally approved by the Kent County Remonumentation Peer Group and monumented by C. Hay on 12/11/81 and was recorded per L.C.R.C. #2503.

B. Description of corner evidence found and/or method applied in restoring or reestablishing corner:

K-5 Found a Standard Kent County Monument on the C/L of 2 Mile Road (bit.) running East and West, 30' ± East of the C/L of the gravel drive to House #8780 running South, on line of a tree row running North and South per L.C.R.C.'s #2503 and #8088 as set by C. Hay in place of a 1/2" iron he found which checked L.C.R.C. #637 and the K.C. Surveyor's records.

L.C.R.C. #2503

L.C.R.C. #8088

SE side 28" Walnut N 70° E 95.54'
W side of 44" Oak of a Twin (West tree) S 08° W 39.78'

Nail & K.C. remon tag in East side 48" Oak N 05° E 27.62' (m. 27.65')
Nail & K.C. remon tag in SE side 28" Walnut N 75° E 95.54' (m. 95.55')
Nail & K.C. remon tag in West side 44" Oak of a twin (W tree) S 08° W 39.80'
Nail & K.C. remon tag in North side 16" Twin Oak S 55° E 71.25'

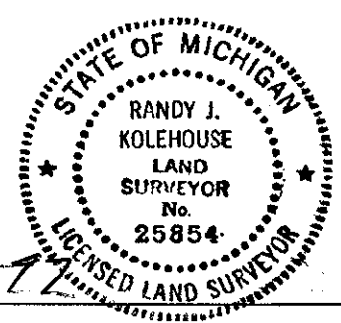
The selected location is accepted by me and is generally accepted by professional surveyors as the best available evidence of the position of the original corner.

C. Description of monument for corner and accessories established to perpetuate locating the position of the corner:

K-5 Standard Kent County Monument

Nail & K.C. remon. tag on E side 48" Oak N 05° E 27.65'
Nail & K.C. remon. tag on SE side 28" Walnut N 75° E 95.55'
Nail & K.C. remon. tag on N side 44" Oak S 08° W 39.80'
Nail & K.C. remon. tag on N side 16" Twin Oak S 55° E 71.25'

Signed by Randy J. Kolehouse Date 8-1-97
EARTH TECH



Surveyor's Michigan License No. 25854