

SURVEY & REMONUMENTATION

MAR 03 1998

\$7.00
\$2.00

SECTION

LAND CORNER RECORDATION CERTIFICATE
Filing Requirement of Act 74, Mich. P.A. 1970
KENT COUNTY REMONUMENTATION

For corners in

Kent (County)	Located in: Township	Ada	Corner Code #
1. Public Land Survey	T <u>7N</u> R <u>10W</u>		<u>K-6</u>
	T _____ R _____		_____
	T _____ R _____		_____
	T _____ R _____		_____
2. Property Controlling in Section	S _____ T _____ R _____		_____
	S _____ T _____ R _____		_____
3. Miscellaneous Property in Sec.	S _____ T _____ R _____		_____
	S _____ T _____ R _____		_____

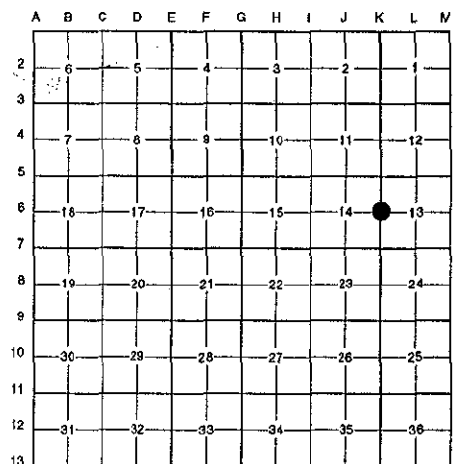
STATE OF MICHIGAN
COUNTY OF KENT
RECEIVED FOR RECORD
97 NOV 14 AM 9:01
REG. OF DEEDS
Luis J. Cole

10317

Register of Deeds Stamp & File Number

4. Lot No. _____, Recorded Plat _____
5. Private Claims _____

I, Randy Kolehouse, in a field survey on August 6 19 97, do hereby certify that under requirements of P.A. 74 Michigan P.A. of 1970, the corner points mentioned in lines 1 and 2 above were in conformance with regulations and rules therefore as required in the current manual of survey instructions of the United States Department of the interior, Bureau of Land Management or by a decree of a Court of Law and/or that the corner points mentioned in lines 3, 4 and 5 above were in conformance with the rules of the Michigan Board of Land Surveyors or by a Decree of a Court of Law; established, re-established, monumented, re-monumented, recovered, found as expressed below:



NOTE: Not more than 4 corners, all in the same town and range, may be recorded on this certificate.

A. Description of original monument and accessories and/or subsequent restoration:

K-6	1831	G.L.O. Notes	Mullett	Set Post
	N/A	Witness Map	K.C. Surveyor	3/4" Iron Pipe
	1973	L.C.R.C. #637	Exxel Engineering	3/4" Iron Pipe
	1981	L.C.R.C. #2503	C. Hay	Fnd. 3/4" Iron / Set K.C. Monument
	1995	L.C.R.C. #8089	Glaza & Associates	K.C. Monument

This corner was originally approved by the Kent County Remonumentation Peer Group and monumented by C. Hay on 12/11/81 and was recorded per L.C.R.C. #2503.

B. Description of corner evidence found and/or method applied in restoring or reestablishing corner:

K-6 Found a Standard Kent County Monument .5' ± East and 1.0' South of corner of fences running East, West and North per L.C.R.C.'s #2503 and #8089 as set by C. Hay in place of a 3/4" iron he found which checked L.C.R.C. #637 and the K.C. Surveyor's records.

L.C.R.C. #2503

L.C.R.C. #8089

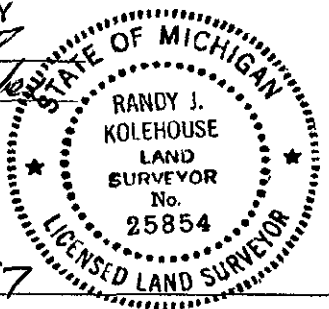
SW side of 14" Oak N 15°W 12.93'	Nail & K.C. remon tag in SW side 16" Oak N15°W 13.19'
South side 14" Oak N 89°E 29.12'	Nail & K.C. remon tag in S side 18" Oak N80°E 29.17' (m. 29.15')
SW side of North 10° W. Ch of a Twin S 70°E 33.38'	Nail & K.C. remon tag in SW side 12" W. Cherry (N tree of twin) S70°E 33.22' (m. 33.23')
NW side 12" W. Ch S 15°W 22.03'	Nail & K.C. remon tag in NW side 16" W. Cherry S 15° W 21.81' (m. 21.80')
South Face of 26" Oak North, 0.65'	South face of 26" Oak North 0.81' (m. 0.85')

The selected location is accepted by me and is generally accepted by professional surveyors as the best available evidence of the position of the original corner.

C. Description of monument for corner and accessories established to perpetuate locating the position of the corner:

K-6 Standard Kent County Monument
Nail & K.C. remon. tag on SW side 14" Oak N 15° W 13.19'
Nail & K.C. remon. tag on S side 14" Oak W 80° E 29.15'
Nail & K.C. remon. tag on SW side 12" W. Cherry (N tree of twin) S 70° E 33.23'
Nail & K.C. remon. tag on W side 16" W. Cherry S 15° W 21.80'
Nail & K.C. remon. tag on S side 26" Oak North 0.85'

P.A. 345 1990 KENT COUNTY
PEER APPROVED *9/23/97*
CHAIRMAN *Hans P. ...*



Signed by *Randy J. Kolehouse*
EARTH TECH

Date 9/23/97

Surveyor's Michigan License No. 25854