

MAR 03 1998

**LAND CORNER RECORDATION CERTIFICATE**  
**Filing Requirement of Act 74, Mich. P.A. 1970**  
**KENT COUNTY REMONUMENTATION**

**SECTION**

For corners in

Kent (County)	Located in: Ada Township	Corner Code #
1. Public Land Survey	T <u>7N</u> R <u>10W</u>	<u>K-7</u>
	T _____ R _____	_____
	T _____ R _____	_____
	T _____ R _____	_____
2. Property Controlling In Section	S _____ T _____ R _____	_____
	S _____ T _____ R _____	_____
3. Miscellaneous Property in Sec.	S _____ T _____ R _____	_____
	S _____ T _____ R _____	_____

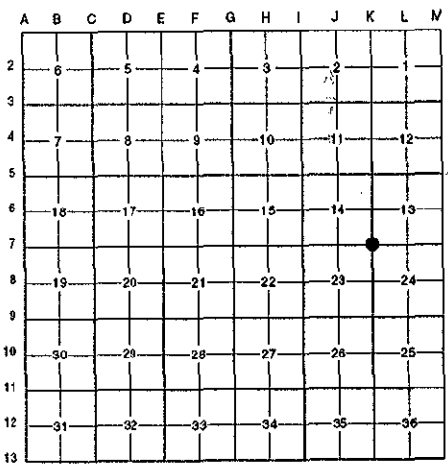
STATE OF MICHIGAN  
 COUNTY OF KENT  
 RECEIVED FOR RECORD  
 97 OCT 15 AM 8:52  
 REG. OF DEEDS  
*Lucy Bond*

**10233**

Register of Deeds Stamp & File Number

- 4. Lot No. \_\_\_\_\_, Recorded Plat \_\_\_\_\_
- 5. Private Claims \_\_\_\_\_

I, Randy Kolehouse, in a field survey on July 10 19 97, do hereby certify that under requirements of P.A. 74 Michigan P.A. of 1970, the corner points mentioned in lines 1 and 2 above were in conformance with regulations and rules therefore as required in the current manual of survey instructions of the United States Department of the Interior, Bureau of Land Management or by a decree of a Court of Law and/or that the corner points mentioned in lines 3, 4 and 5 above were in conformance with the rules of the Michigan Board of Land Surveyors or by a Decree of a Court of Law; established, re-established, monumented, re-monumented, recovered, found as expressed below:



**NOTE: Not more than 4 corners, all in the same town and range, may be recorded on this certificate.**

**A. Description of original monument and accessories and/or subsequent restoration:**

K-7	1831	G.L.O. Notes	Mullett	Set Post
	N/A	Witness Map	K.C. Surveyor	4" Concrete Stake
	1973	L.C.R.C. #637	Exxel Engineering	Concrete Monument
	1981	L.C.R.C. #2608	C. Hay	Fnd. Conc. Monument / Set K.C. Monument
	1995	L.C.R.C. #8090	Glaza & Associates	K.C. Monument

P.A. 345 1990 KENT COUNTY  
 PEER APPROVED 7/24/97  
*Randy Kolehouse*  
 CHAIRMAN

This corner was originally approved by the Kent County Remonumentation Peer Group and monumented by C. Hay on 12/11/81 and was recorded per L.C.R.C. #2608.

**B. Description of corner evidence found and/or method applied in restoring or reestablishing corner:**

K-7 Found a Standard Kent County Monument on line of a fence line running East and West and 400' ± North of a house (no number) to the South per L.C.R.C.'s #2608 and #8090 as set by C. Hay in place of a concrete monument he found which checked L.C.R.C. #637 and the K.C. Surveyor's records.

**L.C.R.C. #2608**

- West side of 15" Oak of a Twin S 05° E 15.95'
- SE side of 15" Oak N 50° E 35.65'
- West side 15" Oak North 46.15'
- SW side 14" Oak N 45° W 23.10'
- NW side 8" Oak S 40° W 30.10'

**L.C.R.C. #8090**

- Nail & K.C. remon tag in W side 15" Oak S 05° E 15.98' (m. 15.98')
- Nail & K.C. remon tag in SE side 15" Oak N 50° E 35.69' (m. 35.71')
- Nail & K.C. remon tag in W side 15" Oak North 46.10' (m. 46.13')
- Nail & K.C. remon tag in SW side 14" Oak N 45° W 23.05' (m. 23.01')
- Nail & K.C. remon tag in NW side 8" Oak S 40° W 30.05' (m. 30.04')

The selected location is accepted by me and is generally accepted by professional surveyors as the best available evidence of the position of the original corner.

**C. Description of monument for corner and accessories established to perpetuate locating the position of the corner:**

- K-7 Standard Kent County Monument
- Nail & K.C. remon. tag on N side 15" Twin Oak S 05° E 15.98'
  - Nail & K.C. remon. tag on SE side 15" Oak N 50° E 35.71'
  - Nail & K.C. remon. tag on W side 15" Oak North 46.13'
  - Nail & K.C. remon. tag on SW side 14" Oak N 45° W 23.01'
  - Nail & K.C. remon. tag on NW side 8" Oak S 40° W 30.04'

Signed by *Randy J. Kolehouse* Date 8-1-97  
 EARTH TECH

Surveyor's Michigan License No. 25854