

SURVEY & REMONUMENTATION

MAR 03 1998

LAND CORNER RECORDATION CERTIFICATE
 Filing Requirement of Act 74, Mich. P.A. 1970
 KENT COUNTY REMONUMENTATION

SECTION

For corners in

<u>Kent</u> (County)	Located in: Ada Township	Corner Code #
1. Public Land Survey	T <u>7N</u> R <u>10W</u>	<u>K-8</u>
	T _____ R _____	_____
	T _____ R _____	_____
	T _____ R _____	_____
2. Property Controlling in Section	S _____ T _____ R _____	_____
	S _____ T _____ R _____	_____
3. Miscellaneous Property in Sec.	S _____ T _____ R _____	_____
	S _____ T _____ R _____	_____

STATE OF MICHIGAN
 COUNTY OF KENT
 RECEIVED FOR RECORD

97 OCT 15 AM 8:52

REG. OF DEEDS

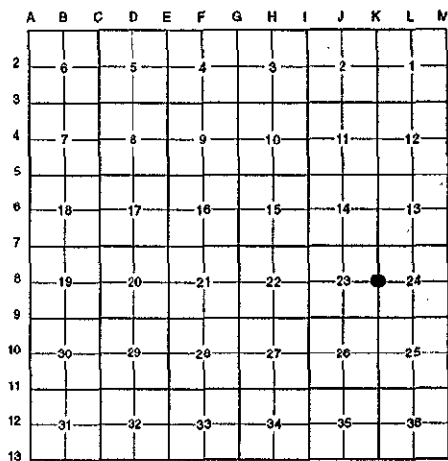
[Signature]

10234

Register of Deeds Stamp & File Number

4. Lot No. _____, Recorded Plat _____
 5. Private Claims _____

I, Randy Kolehouse, in a field survey on May 29 19 97, do hereby certify that under requirements of P.A. 74 Michigan P.A. of 1970, the corner points mentioned in lines 1 and 2 above were in conformance with regulations and rules therefore as required in the current manual of survey instructions of the United States Department of the Interior, Bureau of Land Management or by a decree of a Court of Law and/or that the corner points mentioned in lines 3, 4 and 5 above were in conformance with the rules of the Michigan Board of Land Surveyors or by a Decree of a Court of Law; established, re-established, monumented, re-monumented, recovered, found as expressed below:



NOTE: Not more than 4 corners, all in the same town and range, may be recorded on this certificate.

A. Description of original monument and accessories and/or subsequent restoration:

K-8	1831	G.L.O. Notes	Mullet	Set Post
	1956 & 1967	Witness Map	K.C. Surveyor	Iron
	1977	L.C.R.C. #1108	Exxel Engineering	3/4" Solid Rod
	1981	L.C.R.C. #2608	C. Hay	Fnd. 3/4" Solid Rod / Set K.C. Monument
	1994	L.C.R.C. #8091	Glaza & Associates	K.C. Monument

This corner was originally approved by the Kent County Remonumentation Peer Group and monumented by C. Hay on 12/11/81 and was recorded per L.C.R.C. #2608.

B. Description of corner evidence found and/or method applied in restoring or reestablishing corner:

K-8 Found a Standard Kent County Monument 11' ± North of the C/L of Conservation Street (bit.) running East and West and at the East edge of a bituminous drive to house #8795 per L.C.R.C.'s #2608 and #8091 as set by C. Hay in place of a 3/4" solid rod he found which checked L.C.R.C. #1108 and the K.C. Surveyor's records.

L.C.R.C. #2608	L.C.R.C. #8091
West side of 9" Oak S 10° W 58.50'	K.C. remon tag & nail in West side 12" Elder (quad) S 15° E 79.09'
West side of 12" Sycamore (quad) S 15° E 78.8'	K.C. remon tag & nail in East side 12' Ash North 33.66'
East side of 10" Ash North 33.50'	K.C. remon tag & nail in SW side 12" Pine N 44° W 52.51'
SW side 12" Pine N 44° W 52.51'	K.C. remon tag & nail in NE side 28" Willow N 30° W 64.45'
NE side 19" Willow N 30° W 64.45'	

The selected location is accepted by me and is generally accepted by professional surveyors as the best available evidence of the position of the original corner.

C. Description of monument for corner and accessories established to perpetuate locating the position of the corner:

K-8 Standard Kent County Monument

Nail & K.C. remon. tag on W side 12" Maple (quad.) S 15° E 79.09'

Nail & K.C. remon. tag on E side 12" Ash North 33.66'

Nail & K.C. remon. tag on SW side 12" Pine N 44° W 52.51'

Nail & K.C. remon. tag on NE side 30" Willow N 30° W 64.45'

P.A. 345 1990 KENT COUNTY
 PEER APPROVED 6/26/97
 CHAIRMAN Randy Kolehouse



Signed by Randy J. Kolehouse Date 8-1-97
 EARTH TECH

Surveyor's Michigan License No. 25854