

SURVEY & REMONUMENTATION

MAR 03 1998

LAND CORNER RECORDATION CERTIFICATE Filing Requirement of Act 74, Mich. P.A. 1970 KENT COUNTY REMONUMENTATION

For corners in SECTION
Kent
(County)

Located in: Ada Corner Code #
Township

- | | | | |
|------------------------------------|-------------|--------------|------------|
| 1. Public Land Survey | T <u>7N</u> | R <u>10W</u> | <u>L-7</u> |
| | T _____ | R _____ | _____ |
| | T _____ | R _____ | _____ |
| | T _____ | R _____ | _____ |
| 2. Property Controlling in Section | S _____ | T _____ | R _____ |
| | S _____ | T _____ | R _____ |
| 3. Miscellaneous Property in Sec. | S _____ | T _____ | R _____ |
| | S _____ | T _____ | R _____ |

4. Lot No. _____, Recorded Plat _____
5. Private Claims _____

REG. OF DEEDS

Eric S. Konecny

97 OCT 15 AM 8:52

STATE OF MICHIGAN
COUNTY OF KENT
RECEIVED FOR RECORD

10242

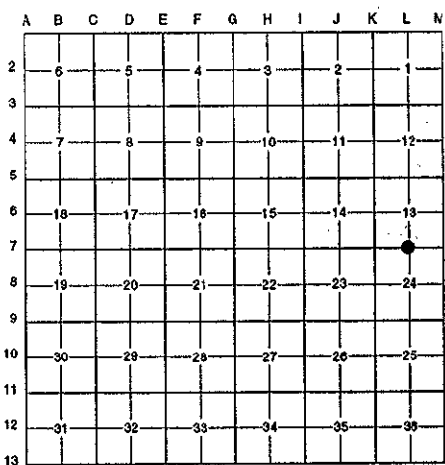
Register of Deeds Stamp & File Number

I, Randy Kolehouse, in a field survey on January 30 19 97, do hereby certify that under requirements of P.A. 74 Michigan P.A. of 1970, the corner points mentioned in lines 1 and 2 above were in conformance with regulations and rules therefore as required in the current manual of survey instructions of the United States Department of the Interior, Bureau of Land Management or by a decree of a Court of Law and/or that the corner points mentioned in lines 3, 4 and 5 above were in conformance with the rules of the Michigan Board of Land Surveyors or by a Decree of a Court of Law; established, re-established, monumented, re-monumented, recovered, found as expressed below:

NOTE: Not more than 4 corners, all in the same town and range, may be recorded on this certificate.

A. Description of original monument and accessories and/or subsequent restoration:

L-7	1831	G.L.O. Notes	Mullett	Set Post
	N/A	Witness Map	K.C. Surveyor	Iron
	1973	L.C.R.C. #637	Exxel Engineering	"1/2" Iron in Monument Box
	1982	L.C.R.C. #3144	Moore & Bruggink	Fnd. 1/2" Iron in Mon. Box / Set K.C. Monument in Mon. Box
	1994	L.C.R.C. #8100	Glaza & Associates	K.C. Monument



This corner was originally approved by the Kent County Remonumentation Peer Group and monumented by Moore & Bruggink on 6/15/82 and was recorded per L.C.R.C. #8100.

B. Description of corner evidence found and/or method applied in restoring or reestablishing corner:

L-7 Found a Standard Kent County Monument 4' ± West of the C/L of Mc Cabe Avenue (bit.) running North and South and 150' North of drive to Green Crest Farms per L.C.R.C.'s #3144 and #8100 as set by Moore & Bruggink in place of a 1/2" iron they found in a monument box which checked L.C.R.C. #637 and the K.C. Surveyor's records.

L.C.R.C. #3144

- K.C. Nail & Tag 15" Oak S 45° W 35.25'
- K.C. Nail & Tag 12" Oak N 50° W 46.27'
- K.C. Nail & Tag 36" Oak N 35° W 57.70'
- K.C. Nail & Tag 10" Maple N 85° E 56.95'
- K.C. Nail & Tag 12" Sassafrass S 85° E 43.20'

L.C.R.C. #8100

- Nail & K.C. remon tag in SE side 18" Oak S 45° W 35.25'
- Nail & K.C. remon tag in NE side 14" Oak N 50° W 46.27'
- Nail & K.C. remon tag in E side 40" Oak N 35° W 57.70'
- Nail & K.C. remon tag in N side 12" Maple N 85° E 56.98'
- Nail & K.C. remon tag in S side 14" Sassafrass S 85° E 43.17'

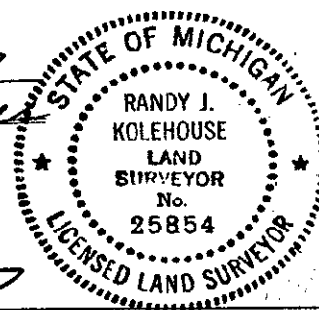
The selected location is accepted by me and is generally accepted by professional surveyors as the best available evidence of the position of the original corner.

C. Description of monument for corner and accessories established to perpetuate locating the position of the corner:

L-7 Standard Kent County Monument

- Nail & K.C. remon. tag on SE side 18" Oak S 45° W 35.25'
- Nail & K.C. remon. tag on NE side 14" Oak N 50° W 46.27'
- Nail & K.C. remon. tag on E side 40" Oak N 35° W 57.70'
- Nail & K.C. remon. tag on N side 12" Maple N 85° E 56.98'
- Nail & K.C. remon. tag on S side 14" Sasafrass S 85° E 43.17'

P.A. 345 1990 KENT COUNTY
PEER APPROVED 5/22/97
CHAIRMAN *Stan Huber*



Signed by *Randy J. Kolehouse* Date 8-1-97

EARTH TECH

Surveyor's Michigan License No. 25854