

SURVEY & REMONUMENTATION

MAR 03 1998

LAND CORNER RECORDATION CERTIFICATE
Filing Requirement of Act 74, Mich. P.A. 1970
KENT COUNTY REMONUMENTATION

For corners in **SECTION**

Kent (County)	Located in:	Ada Township	Corner Code #
1. Public Land Survey	T _____	R _____	_____
	T _____	R _____	_____
	T _____	R _____	_____
	T _____	R _____	_____
2. Property Controlling in Section	S _____ T <u>7N</u>	R <u>10W</u>	<u>Witness Mon. 997.51'</u>
	S _____ T _____	R _____	<u>North of K-4</u>
3. Miscellaneous Property in Sec.	S _____ T _____	R _____	_____
	S _____ T _____	R _____	_____

"Other" code #20

STATE OF MICHIGAN
 COUNTY OF KENT
 RECEIVED FOR RECORD
 97 OCT 15 AM 8:52
 REG. OF DEEDS
Luigi Standa

10231

Register of Deeds Stamp & File Number

4. Lot No. _____, Recorded Plat _____
 5. Private Claims _____

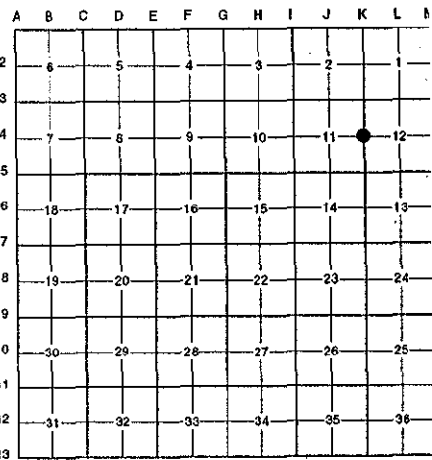
I, Randy Kolehouse, in a field survey on May 29 19 97, do hereby certify that under requirements of P.A. 74 Michigan P.A. of 1970, the corner points mentioned in lines 1 and 2 above were in conformance with regulations and rules therefore as required in the current manual of survey instructions of the United States Department of the Interior, Bureau of Land Management or by a decree of a Court of Law and/or that the corner points mentioned in lines 3, 4 and 5 above were in conformance with the rules of the Michigan Board of Land Surveyors or by a Decree of a Court of Law; established, re-established, monumented, re-monumented, recovered, found as expressed below:

NOTE: Not more than 4 corners, all in the same town and range, may be recorded on this certificate.

A. Description of original monument and accessories and/or subsequent restoration:

K-4	1831	G.L.O. Notes	Mullett	Set Post
	1903	Notes	Williams & Works	Tamarack Pole
	N/A	Witness Map	K.C. Surveyor	Tamarack Pole in Lake
	1989	L.C.R.C. #5102	T. Chettleburgh	Set K.C. Monument
	1994	L.C.R.C. #8087	Glaza & Associates	K.C. Monument

P.A. 345 1990 KENT COUNTY
 PEER APPROVED 6/26/97
 CHAIRMAN Harry Huber



This corner was originally approved by the Kent County Remonumentation Peer Group and monumented by T. Chettleburgh on 1/17/89 and was recorded per L.C.R.C. #5102.

B. Description of corner evidence found and/or method applied in restoring or reestablishing corner:

K-4 Found a Standard Kent County Monument .5' above ground in a fence line running North and South per L.C.R.C.'s #5102 and #8087 as set by T. Chettleburgh. Monument was set on section line at north edge of swamp 997.51' North of K-4 as a witness monument.

L.C.R.C. #5102

L.C.R.C. #8087

K.C. Remon Tag & nail West side 20" Walnut N 08° E 39.92'
 K.C. Remon Tag & nail West side 17" Walnut N 09° E 33.74'
 K.C. Remon Tag & nail SE side 13" Walnut N 68° E 7.30'
 K.C. Remon Tag & nail NW side 8" Elm N 52° E 25.90'
 K.C. Remon Tag & nail S side 8" Elm S 86° E 23.05'
 K.C. Remon Tag & nail SE side 14" Box Elder S 23° W 43.15'

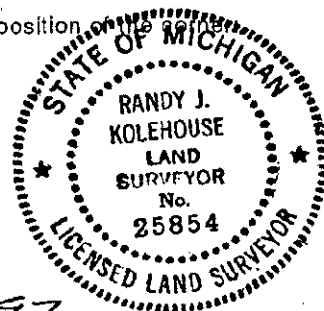
K.C. remon tag & nail in W side 20" Walnut N 08° E 39.92'
 K.C. remon tag & nail in W side 17" Walnut N 09° E 33.74'
 K.C. remon tag & nail in SE side 13" Walnut N 68° E 7.30'
 K.C. remon tag & nail in NW side 12" Elm N 52° E 25.86'
 K.C. remon tag & nail in N side 10" Elm (dead) S 86° E 23.10'
 K.C. remon tag & nail in SE side 16" Box Elder S 23° W 43.12' (m. 45.12')

The selected location is accepted by me and is generally accepted by professional surveyors as the best available evidence of the position of the original corner.

C. Description of monument for corner and accessories established to perpetuate locating the position:

K-4 Standard Kent County Monument

Nail & K.C. remon. tag on W side 20" Walnut N 08° E 39.92'
 Nail & K.C. remon. tag on W side 17" Walnut N 09° E 33.74'
 Nail & K.C. remon. tag on SE side 13" Walnut N 68° E 7.30'
 Nail & K.C. remon. tag on NW side 12" Elm N 52° E 25.86'
 Nail & K.C. remon. tag on SE side 16" Box Elder S 23° W 45.12'



Signed by Randy J. Kolehouse Date 8-9-97

EARTH TECH

Surveyor's Michigan License No. 25854