

SURVEY & REMONUMENTATION

APR 28 1995

COMMISSION

LAND CORNER RECORDATION CERTIFICATE
Filing Requirement of Act 74, Mich. P.A. 1970
KENT COUNTY REMONUMENTATION

STATE OF MICHIGAN
COUNTY OF KENT
RECEIVED FOR RECORD

94 DEC 29 AM 11:12

For corners in

Kent
(County)

Located in:

Corner Code #

- | | | | | | |
|---------------------------------------|-------------|--------------|---------|-------|-------|
| 1. Public Land Survey | T <u>7N</u> | R <u>11W</u> | _____ | B-8 | _____ |
| | T _____ | R _____ | _____ | | _____ |
| | T _____ | R _____ | _____ | | _____ |
| | T _____ | R _____ | _____ | | _____ |
| 2. Property Controlling
in Section | S _____ | T _____ | R _____ | _____ | _____ |
| | S _____ | T _____ | R _____ | _____ | _____ |
| 3. Miscellaneous
Property in Sec. | S _____ | T _____ | R _____ | _____ | _____ |
| | S _____ | T _____ | R _____ | _____ | _____ |

Lucy J. Bond
REG. OF DEEDS

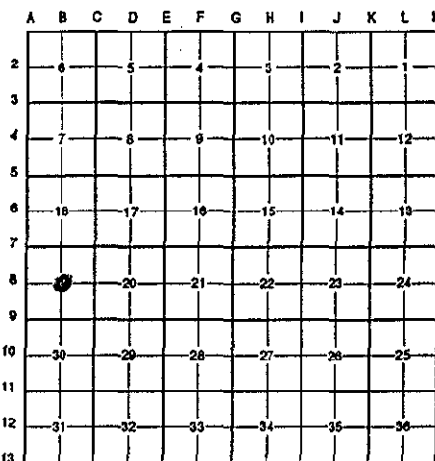
7940

Register of Deeds Stamp & File Number

4. Lot No. _____, Recorded Plat _____
5. Private Claims _____

I, Randy Kolehouse, in a field survey on September 29 19 94, do hereby certify that under requirements of P.A. 74 Michigan P.A. of 1970, the corner points mentioned in lines 1 and 2 above were in conformance with regulations and rules therefore as required in the current manual of survey instructions of the United States Department of the Interior, Bureau of Land Management or by a decree of a Court of Law and/or that the corner points mentioned in lines 3, 4 and 5 above were in conformance with the rules of the Michigan Board of Land Surveyors or by a Decree of a Court of Law; established, re-established, monumented, re-monumented, recovered, found as expressed below:

NOTE: Not more than 4 corners, all in the same town and range, may be recorded on this certificate.



A. Description of original monument and accessories and/or subsequent restoration:

B-8 This corner was not originally set by the G.L.O.

1952 Survey Records K.C. Surveyor City Iron

P.A. 345 1990 KENT COUNTY
PEER APPROVED 12/11/94
CHAIRMAN *Harry Kube*

B. Description of corner evidence found and/or method applied in restoring or reestablishing corner:

B-8 City iron as shown on 1952 K.C. Surveyor's witness map has been destroyed due to construction. Reestablished corner using the following witnesses from 1952.

- Cut NW cor. hse. fdn. SE 57.4'
- Face p. pole NW 32.6'
- NE cor. hse. fndn. SW 88.70'
- Top hyd. NE 43.6'

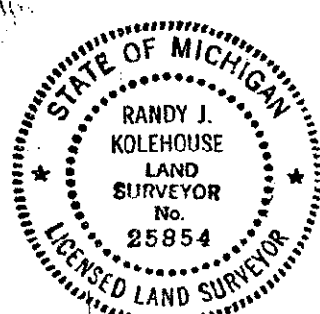
This point is 0.2' North of the intersection of 1/4 lines.

The selected location is accepted by me and is generally accepted by professional surveyors as the best available evidence of the position of the original corner.

C. Description of monument for corner and accessories established to perpetuate locating the position of the corner:

B-8 Set Standard 4" x 30" Kent County Monument.

- Nail & K.C. remon. tag in N side 12" Maple S 75° E 74.57'
- Nail & K.C. remon. tag in W side 18" Maple S 10° E 77.50'
- Nail & K.C. remon. tag in SE side p. pole S 65° W 22.78'
- Nail & K.C. remon. tag in SW side p. pole N 40° W 32.99'
- "V" cut in hse. fndn. S 55° E 57.40'
- NE cor. hse. fndn. S 40° W 88.70'
- C/L hyd. N 65° E 43.58'



Signed by *Randy J. Kolehouse*
Surveyor's Michigan License No. 25854

Date 12/20/94