

JAN 24 1996

COMMISSION

LAND CORNER RECORDATION CERTIFICATE
Filing Requirement of Act 74, Mich. P.A. 1970
KENT COUNTY REMONUMENTATION

For corners in

Kent (County)	Located in:	Corner Code #
1. Public Land Survey	T <u>7N</u> R <u>11W</u>	<u>C-5</u>
	T _____ R _____	_____
	T _____ R _____	_____
	T _____ R _____	_____
2. Property Controlling in Section	S _____ T _____ R _____	_____
	S _____ T _____ R _____	_____
3. Miscellaneous Property in Sec.	S _____ T _____ R _____	_____
	S _____ T _____ R _____	_____

4. Lot No. _____, Recorded Plat _____
5. Private Claims _____

STATE OF MICHIGAN
COUNTY OF KENT
RECEIVED FOR RECORD

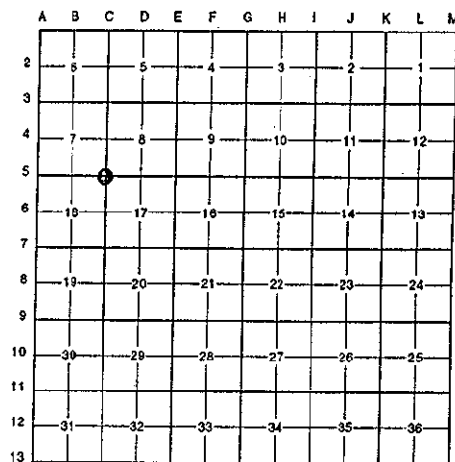
95 OCT 31 AM 8:59

REG. OF DEEDS
Lucy Stand

8727
Register of Deeds Stamp & File Number

I, Randy Kolehouse, in a field survey on June 14 19 94, do hereby certify that under requirements of P.A. 74 Michigan P.A. of 1970, the corner points mentioned in lines 1 and 2 above were in conformance with regulations and rules therefore as required in the current manual of survey instructions of the United States Department of the interior, Bureau of Land Management or by a decree of a Court of Law and/or that the corner points mentioned in lines 3, 4 and 5 above were in conformance with the rules of the Michigan Board of Land Surveyors or by a Decree of a Court of Law; established, re-established, monumented, re-monumented, recovered, found as expressed below:

NOTE: Not more than 4 corners, all in the same town and range, may be recorded on this certificate.



A. Description of original monument and accessories and/or subsequent restoration:

C-5	1831	G.L.O. Notes	Mullett	Set Post	P.A. 345 1990 KENT COUNTY
	1910-1957	Survey Notes	Williams & Works	City Iron	PEER APPROVED 11/3/94
	N/A	Survey Notes	City of Grand Rapids	City Iron	CHAIRMAN <i>Randy Kolehouse</i>
	1983	L.C.R.C. #3502	William R. Byl	Fnd. Iron/Set K.C. Mon.	
	1988	L.C.R.C. #4569	Bueche	K.C. Mon.	

This corner was originally approved by the Kent County Remonumentation Peer Group and monumented by William R. Byl on 7/28/83 and was recorded per L.C.R.C. #3502.

B. Description of corner evidence found and/or method applied in restoring or reestablishing corner:

C-5 Found standard Kent County Monument in the C/L of Knapp Street E-W and Eastern Avenue North per L.C.R.C.'s #3502 and #4569 as set by William R. Byl in place of a hex. iron in a monument box he found over a City iron 3' below the road surface which checked Williams & Works and City of Grand Rapids survey records.

L.C.R.C. #3502

L.C.R.C. #4569

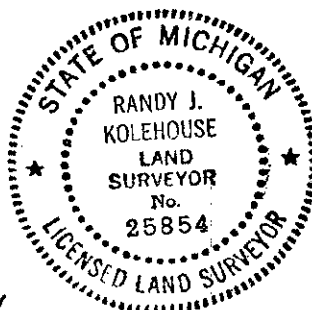
SW cor. brick veneer hse. #801 N 50° E 78.78'
NW cor. brick veneer hse. #1939 Meadowfield S 55° E 119.88'
SE cor. fndn. hse. # ? N 40° W 72.60'
C/L top of hydrant N 50° W 45.76'
Face of curb S 00° W 19.88'

SW cor. brick veneer hse. #801 N 50° E 78.78'
NW cor. brick veneer hse. #1939 Meadowfield S 55° E 119.88'
SE cor. fndn. hse. # ? N 40° W 72.60'
C/L top of hydrant N 50° W 45.76'
Face of curb S 00° W 19.88'
Nail & tag in E side 44" tree S 15° E 34.31'
C/L bit. road - E & W - Knapp
C/L bit. road - N - Eastern
Fence line S

The selected location is accepted by me and is generally accepted by professional surveyors as the best available evidence of the position of the original corner.

C. Description of monument for corner and accessories established to perpetuate locating the position of the corner:

C-5 Standard Kent County Monument
SW cor. brick veneer hse. #801 N 50° E 78.78'
NW cor. brick veneer hse. #1939 Meadowfield S 55° E 119.88'
SE cor. fndn. hse. # ? N 40° W 72.60'
C/L top of hydrant N 50° W 45.76'
Face of curb S 00° W 19.88'
Nail & K.C. remon. tag in E side 44" tree S 15° E 34.31'
In C/L Knapp (bit.) road - E & W
In C/L Eastern (bit.) road - N
Fence line S



Signed by *Randy J. Kolehouse*

Date 12/21/94

Surveyor's Michigan License No. 25854