

SURVEY & REMONUMENTATION

APR 28 1995

COMMISSION

LAND CORNER RECORDATION CERTIFICATE
Filing Requirement of Act 74, Mich. P.A. 1970
KENT COUNTY REMONUMENTATION

STATE OF MICHIGAN
 COUNTY OF KENT
 RECEIVED FOR RECORD

94 DEC 29 AM 11:12

For corners in

<u>Kent</u> (County)	Located in:	Corner Code #
1. Public Land Survey	T <u>7N</u> R <u>11W</u>	<u>D-6</u>
	T _____ R _____	_____
	T _____ R _____	_____
	T _____ R _____	_____
2. Property Controlling in Section	S _____ T _____ R _____	_____
	S _____ T _____ R _____	_____
3. Miscellaneous Property in Sec.	S _____ T _____ R _____	_____
	S _____ T _____ R _____	_____

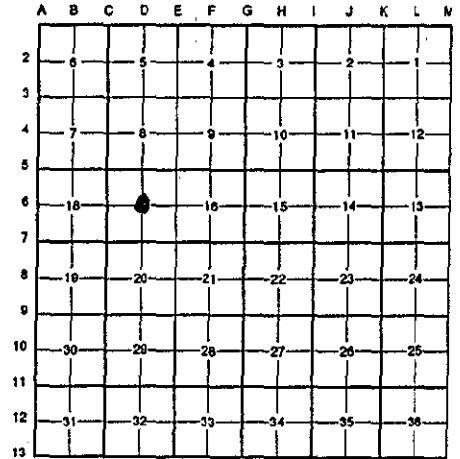
W. J. Bond
 REG. OF DEEDS

7950

Register of Deeds Stamp & File Number

4. Lot No. _____, Recorded Plat _____
 5. Private Claims _____

I, Randy Kolehouse, in a field survey on June 14 19 94, do hereby certify that under requirements of P.A. 74 Michigan P.A. of 1970, the corner points mentioned in lines 1 and 2 above were in conformance with regulations and rules therefore as required in the current manual of survey instructions of the United States Department of the interior, Bureau of Land Management or by a decree of a Court of Law and/or that the corner points mentioned in lines 3, 4 and 5 above were in conformance with the rules of the Michigan Board of Land Surveyors or by a Decree of a Court of Law; established, re-established, monumented, re-monumented, recovered, found as expressed below:



NOTE: Not more than 4 corners, all in the same town and range, may be recorded on this certificate.

A. Description of original monument and accessories and/or subsequent restoration:

D-6 This corner was not originally set by the G.L.O.

1936	Survey Records	Williams & Works	City Iron
1936-1965	Survey Records	Williams & Works	City Iron
1980	L.C.R.C. #1407	Exxel Engineering	Railroad Spike

B. Description of corner evidence found and/or method applied in restoring or reestablishing corner:

D-6 Found railroad spike at the approximate C/L of Fuller Avenue running N-S and Sweet Street running West per L.C.R.C. #1407 which was set by Exxel Engineering using witnesses to the City iron from Williams & Works records. Railroad spike is 0.3' North and 2.9' West of intersection of 1/4 lines. Accepted railroad spike as Center Section.

P.A. 345 1990 KENT COUNTY
 PEER APPROVED 12/11/94
 CHAIRMAN *Harry Hubert*

The selected location is accepted by me and is generally accepted by professional surveyors as the best available evidence of the position of the original corner.

C. Description of monument for corner and accessories established to perpetuate locating the position of the corner:

D-6 Replaced railroad spike with Standard 4" x 30" Kent County Monument.

NW corner hse. SE 129.57'
 NE corner hse. SW 89.67'
 C/L top hyd. NW 45.41'
 P.K. in p. pole East 42.27'



Signed by Randy J. Kolehouse Date 12/12/94
 Surveyor's Michigan License No. 25854