

SURVEY & REMONUMENTATION

APR 28 1995

COMMISSION

STATE OF MICHIGAN
COUNTY OF KENT
RECEIVED FOR RECORD

LAND CORNER RECORDATION CERTIFICATE

Filing Requirement of Act 74, Mich. P.A. 1970

DEC -6 AM 9:01

KENT COUNTY REMONUMENTATION

For corners in

Kent <small>(County)</small>	Located in:	Corner Code #	
1. Public Land Survey	T <u>7N</u> R <u>11W</u>	<u>D-7</u>	_____
	T _____ R _____	_____	_____
	T _____ R _____	_____	_____
	T _____ R _____	_____	_____
2. Property Controlling in Section	S _____ T _____ R _____	_____	_____
	S _____ T _____ R _____	_____	_____
3. Miscellaneous Property in Sec.	S _____ T _____ R _____	_____	_____
	S _____ T _____ R _____	_____	_____

W. J. Bond
REG. OF DEEDS

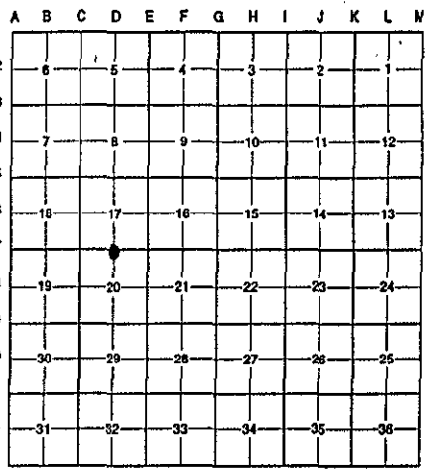
7789

Register of Deeds Stamp & File Number

4. Lot No. _____, Recorded Plat _____
5. Private Claims _____

I, Randy Kolehouse, in a field survey on June 13 19 94, do hereby certify that under requirements of P.A. 74 Michigan P.A. of 1970, the corner points mentioned in lines 1 and 2 above were in conformance with regulations and rules therefore as required in the current manual of survey instructions of the United States Department of the Interior, Bureau of Land Management or by a decree of a Court of Law and/or that the corner points mentioned in lines 3, 4 and 5 above were in conformance with the rules of the Michigan Board of Land Surveyors or by a Decree of a Court of Law; established, re-established, monumented, re-monumented, recovered, found as expressed below:

NOTE: Not more than 4 corners, all in the same town and range, may be recorded on this certificate.



A. Description of original monument and accessories and/or subsequent restoration:

D-7	1831 G.L.O. Notes	Mullett	Set Post
	1954 Wit. Map	K.C. Surveyor	Cuts on Manhole
	1980 L.C.R.C. #1407	Exxel Engineering	Cuts on Manhole
	1982 L.C.R.C. #2758	Williams & Works	Cuts on Manhole
	1988 L.C.R.C. #4590	Bueche	Cuts on Manhole

P.A. 345 1990 KENT COUNTY
PEER APPROVED 11/3/94
CHAIRMAN *Harry Kuter*

This corner was originally approved by the Kent County Remonumentation Peer Group and monumented by Williams & Works on 3/24/82 and was recorded per L.C.R.C. #2758.

B. Description of corner evidence found and/or method applied in restoring or reestablishing corner:

D-7 Found intersection of cut marks on manhole at the C/L intersection of Fuller Avenue N-S and Leonard Street E-W per witness from above L.C.R.C. which also checks K.C. Surveyor's records (1954).

L.C.R.C. #2758

L.C.R.C. #4590

SW cor. brick bldg. N 45° E 146.92'
NW cor. brick bldg. S 45° E 172.64'
NE cor. brick bldg. S 45° W 147.70'
SW cor. brick bldg. N 55° W 162.70'
C/L "X" of M.H. S 45° E 9.50'

SW cor. brick bldg. N 45° E 146.92'
NW cor. brick bldg. S 45° E 172.64'
NE cor. brick bldg. S 45° W 147.70'
SW cor. brick bldg. N 55° W 162.70'
C/L "X" of M.H. S 45° E 9.50'

Corner is at intersection of C/L of Leonard St. & Fuller Ave. Corner is at intersection of C/L of Leonard St. & Fuller Ave.

The selected location is accepted by me and is generally accepted by professional surveyors as the best available evidence of the position of the original corner.

C. Description of monument for corner and accessories established to perpetuate locating the position of the corner:

D-7 Intersection of cut marks on M.H.
SW cor. brick bldg. N 45° E 146.92'
NW cor. brick bldg. S 45° E 172.64'
NE cor. brick bldg. S 45° W 147.70'
SW cor. brick bldg. N 55° W 162.70'
C/L "X" of M.H. S 45° E 9.50'
Corner is at intersection of C/L of Leonard St. & Fuller Ave.



Signed by *Randy J. Kolehouse* Date 12/1/94
Surveyor's Michigan License No. 25854