

SURVEY & REMONUMENTATION

APR 28 1995

COMMISSION

LAND CORNER RECORDATION CERTIFICATE Filing Requirement of Act 74, Mich. P.A. 1970 KENT COUNTY REMONUMENTATION

STATE OF MICHIGAN
COUNTY OF KENT
RECEIVED FOR RECORD

94 DEC -6 AM 9:01

For corners in

Kent (County)	Located in:	Corner Code #
1. Public Land Survey	T <u>7N</u> R <u>11W</u>	E-3
	T _____ R _____	_____
	T _____ R _____	_____
	T _____ R _____	_____
2. Property Controlling in Section	S _____ T _____ R _____	_____
	S _____ T _____ R _____	_____
3. Miscellaneous Property in Sec.	S _____ T _____ R _____	_____
	S _____ T _____ R _____	_____

Teri J. Bond
REG. OF DEEDS

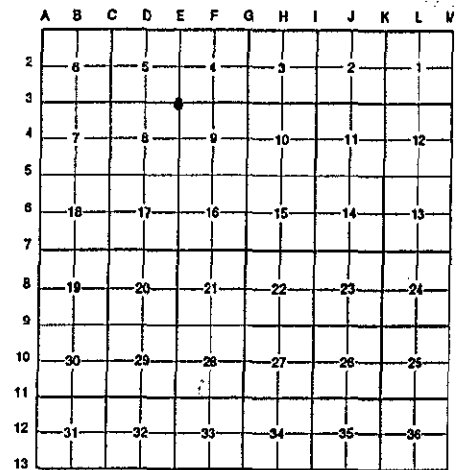
7792

Register of Deeds Stamp & File Number

4. Lot No. _____, Recorded Plat _____
5. Private Claims _____

I, Randy Kolehouse, in a field survey on June 14 19 94, do hereby certify that under requirements of P.A. 74 Michigan P.A. of 1970, the corner points mentioned in lines 1 and 2 above were in conformance with regulations and rules therefore as required in the current manual of survey instructions of the United States Department of the Interior, Bureau of Land Management or by a decree of a Court of Law and/or that the corner points mentioned in lines 3, 4 and 5 above were in conformance with the rules of the Michigan Board of Land Surveyors or by a Decree of a Court of Law; established, re-established, monumented, re-monumented, recovered, found as expressed below:

NOTE: Not more than 4 corners, all in the same town and range, may be recorded on this certificate.



A. Description of original monument and accessories and/or subsequent restoration:

E-3	1831	G.L.O. Notes	Mullett	Set Post	P.A. 345 1990 KENT COUNTY
	1940	Wit. Map	K.C. Surveyor	Monument	PEER APPROVED 11/17/94
	1967	Survey Records	Williams & Works	Iron	CHAIRMAN <i>Henry Thayer</i>
	1975	Survey Records	Exxel Engineering	Bt. Spike	Fnd. Bt. Spike/Set K.C. Mon.
	1983	L.C.R.C. #3505	William R. Byl		
	1988	L.C.R.C. #4668	Bueche	Set K.C. Mon.	

This corner was originally approved by the Kent County Remonumentation Peer Group and monumented by William R. Byl on 7/28/83 and was recorded per L.C.R.C. #3505.

B. Description of corner evidence found and/or method applied in restoring or reestablishing corner:

E-3 Found standard Kent County Monument in 3 Mile Road running E-W per L.C.R.C.'s #3505 and #4688 as set by John Bueche in the same location as the K.C. Monument set by William R. Byl in place of a boat spike over the top of concrete monument he found which checked Exxel Engineering and K.C. Surveyor records.

L.C.R.C. #3505

L.C.R.C. #4668

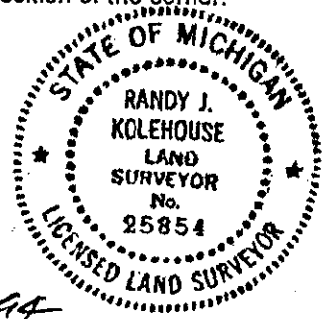
Nail & tag E side p. pole S 00° W 42.96'
"X" cut in top C/L N end 6' culvert N 65° E 57.05'
"X" cut in top C/L S end 6' culvert S 55° E 58.50'

Nail & tag E side p. pole S 00° W 42.96'
"X" cut in top C/L N end 6' culvert N 65° E 57.05'
"X" cut in top C/L S end 6' culvert S 55° E 58.50'
Top center hydt. N 80° W 162.52'
C/L bit. E-W

The selected location is accepted by me and is generally accepted by professional surveyors as the best available evidence of the position of the original corner.

C. Description of monument for corner and accessories established to perpetuate locating the position of the corner:

E-3 Standard Kent County Monument
Nail & K.C. remon. tag E side p. pole S 00° W 42.96'
"X" cut in top C/L N end 6' culvert N 65° E 57.05'
"X" cut in top C/L S end 6' culvert S 55° E 58.50'
Top center hydt. N 80° W 162.52'
C/L bit. E-W



Signed by *Randy J. Kolehouse* Date 12/1/94
Surveyor's Michigan License No. 25854