

SURVEY & REMONUMENTATION

APR 28 1995

COMMISSION

LAND CORNER RECORDATION CERTIFICATE
Filing Requirement of Act 74, Mich. P.A. 1970
KENT COUNTY REMONUMENTATION

STATE OF MICHIGAN
COUNTY OF KENT
RECEIVED FOR RECORD
94 DEC -6 AM 9:01
Lee J. Bond
REG. OF DEEDS

For corners in Kent (County) Located in: _____ Corner Code # _____

1. Public Land Survey	T <u>7N</u> R <u>11W</u>	_____	E-4
	T _____	R _____	_____
	T _____	R _____	_____
	T _____	R _____	_____
2. Property Controlling in Section	S _____	T _____	R _____
	S _____	T _____	R _____
3. Miscellaneous Property in Sec.	S _____	T _____	R _____
	S _____	T _____	R _____

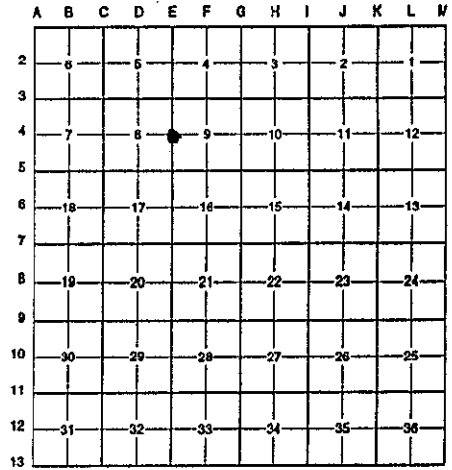
4. Lot No. _____, Recorded Plat _____

5. Private Claims _____

7793

Register of Deeds Stamp & File Number

I, Randy Kolehouse, in a field survey on June 14 19 94, do hereby certify that under requirements of P.A. 74 Michigan P.A. of 1970, the corner points mentioned in lines 1 and 2 above were in conformance with regulations and rules therefore as required in the current manual of survey instructions of the United States Department of the Interior, Bureau of Land Management or by a decree of a Court of Law and/or that the corner points mentioned in lines 3, 4 and 5 above were in conformance with the rules of the Michigan Board of Land Surveyors or by a Decree of a Court of Law; established, re-established, monumented, re-monumented, recovered, found as expressed below:



NOTE: Not more than 4 corners, all in the same town and range, may be recorded on this certificate.

A. Description of original monument and accessories and/or subsequent restoration:

E-4	1831 G.L.O. Notes	Mullett	Set Post
	N/A Wit. Map	K.C. Surveyor	Conc. Monument
	1963 Survey Records	Williams & Works	Boat Spike
	1983 L.C.R.C. #3506	William R. Byl	Fnd. Boat Spike & Mon./Set K.C. Mon.
	1988 L.C.R.C. #4562	Bueche	K.C. Monument

P.A. 345 1990 KENT COUNTY
PEER APPROVED 11/3/94
CHAIRMAN *Harry Huber*

This corner was originally approved by the Kent County Remonumentation Peer Group and monumented by William R. Byl on 7/27/83 and was recorded per L.C.R.C. #3506.

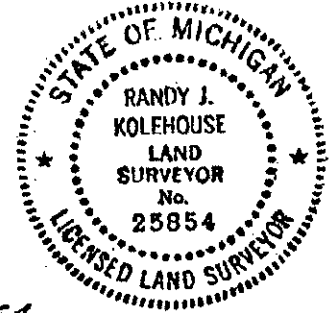
B. Description of corner evidence found and/or method applied in restoring or reestablishing corner:

E-4 Found standard Kent County Monument at the C/L intersection of Ball Avenue running South and Aberdeen Street running E-W per L.C.R.C.'s #3506 and #4562 as set by William Byl in place of a boat spike over a concrete monument he found which checked K.C. Surveyor records and the Briar Hills Plat L. 59 P. 48.	
L.C.R.C. #3506	L.C.R.C. #4562
Nail & tag N side p. pole S 50° W 37.12'	Nail & tag N side p. pole S 50° W 37.12'
C/L Manhole S 25° E 20.05'	C/L Manhole S 25° E 20.05'
C/L Manhole N 25° W 27.99'	C/L Manhole N 25° W 27.99'
C/L top of hydrant N 60° E 43.43'	C/L top of hydrant N 60° E 43.43'
SW cor. brick pillar of porch hse. # ? N 65° E 131.53'	SW cor. brick pillar of porch hse. # ? N 65° E 131.53'
	Nail & K.C. remon. tag in W side p. pole N 45° E 52.77'

The selected location is accepted by me and is generally accepted by professional surveyors as the best available evidence of the position of the original corner.

C. Description of monument for corner and accessories established to perpetuate locating the position of the corner:

E-4	Standard Kent County Monument
	Nail & K.C. remon. tag N side p. pole S 50° W 37.12'
	C/L manhole S 25° E 20.05'
	C/L manhole N 25° W 27.99'
	C/L top of hydrant N 60° E 43.43'
	SW cor. brick pillar of porch hse. # ? N 65° E 131.53'
	Nail & K.C. remon. tag in W side p. pole N 45° E 52.77'



Signed by *Randy J. Kolehouse* Date 12/1/94
Surveyor's Michigan License No. 25854