

SURVEY & REMONUMENTATION

APR 28 1995

LAND CORNER RECORDATION CERTIFICATE Filing Requirement of Act 74, Mich. P.A. 1970 KENT COUNTY REMONUMENTATION

STATE OF MICHIGAN
COUNTY OF KENT
RECEIVED FOR RECORD
94 DEC -6 AM 9:01

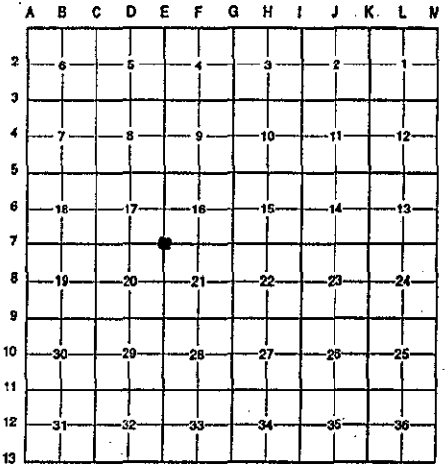
For corners in

<u>Kent</u> (County)	COMMISSION	Located in:	Corner Code #
1. Public Land Survey	T <u>7N</u> R <u>11W</u>		<u>E-7</u>
	T _____ R _____		_____
	T _____ R _____		_____
	T _____ R _____		_____
2. Property Controlling in Section	S _____ T _____ R _____		_____
	S _____ T _____ R _____		_____
3. Miscellaneous Property in Sec.	S _____ T _____ R _____		_____
	S _____ T _____ R _____		_____
4. Lot No. _____, Recorded Plat _____			
5. Private Claims _____			

W. J. Bond
REG. OF DEEDS

7796

Register of Deeds Stamp & File Number



I, Randy Kolehouse, in a field survey on August 13 19 94, do hereby certify that under requirements of P.A. 74 Michigan P.A. of 1970, the corner points mentioned in lines 1 and 2 above were in conformance with regulations and rules therefore as required in the current manual of survey instructions of the United States Department of the Interior, Bureau of Land Management or by a decree of a Court of Law and/or that the corner points mentioned in lines 3, 4 and 5 above were in conformance with the rules of the Michigan Board of Land Surveyors or by a Decree of a Court of Law; established, re-established, monumented, re-monumented, recovered, found as expressed below:

NOTE: Not more than 4 corners, all in the same town and range, may be recorded on this certificate.

A. Description of original monument and accessories and/or subsequent restoration:

E-7	1831	G.L.O. Notes	Mullett	Set Post	P.A. 345 1990 KENT COUNTY
	1937	Wit. Map	K.C. Surveyor	Mon. Box	PEER APPROVED <u>11/3/94</u>
	1973	L.C.R.C. #500	Williams & Works	Set P.K. Nail	<i>Harry Hubert</i>
	1982	L.C.R.C. #3106	Williams & Works	Fnd. P.K./Set K.C. Monument	
	1988	L.C.R.C. #4572	Williams & Works	K.C. Monument	

This corner was originally approved by the Kent County Remonumentation Peer Group and monumented by Williams & Works on 10/15/82 and was recorded per L.C.R.C. #3106.

B. Description of corner evidence found and/or method applied in restoring or reestablishing corner:

E-7 Found standard Kent County Monument at the C/L intersection of Leonard Street running E-W and Ball Avenue running N-S per L.C.R.C.'s #3106 and #4572 as set by Williams & Works in place of a P.K. nail they had set in 1973 using survey records and former surveys.

L.C.R.C. #3106

L.C.R.C. #4572

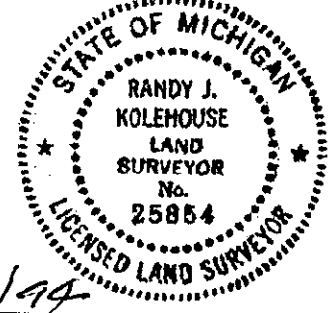
Nail & K.C. remon. tag in SE side p. & t. pole N 60° E 59.35'
Nail & K.C. remon. tag in SW side guy pole S 20° E 62.38'
Nail & K.C. remon. tag in NW side signal control pole S 45° W 51.39'
Top C/L hydrant N 55° W 60.28'
C/L M.H. S 50° W 2.25'
Corner is at C/L Leonard Street & Ball Avenue

Nail & K.C. remon. tag in SE side p. & t. pole N 60° E 59.35'
Nail & K.C. remon. tag in SW side guy pole S 20° E 62.38'
Nail & K.C. remon. tag in NW side signal control pole S 45° W 51.39'
Top C/L hydrant N 55° W 60.28'
C/L M.H. S 50° W 2.25'
Corner is at C/L Leonard Street & Ball Avenue

The selected location is accepted by me and is generally accepted by professional surveyors as the best available evidence of the position of the original corner.

C. Description of monument for corner and accessories established to perpetuate locating the position of the corner:

E-7 Standard Kent County Monument
Nail & K.C. remon. tag in SE side p. & t. pole N 60° E 59.35'
Nail & K.C. remon. tag in SW side guy pole S 20° E 62.38'
Nail & K.C. remon. tag in NW side signal control pole S 45° W 51.39'
Top C/L hydrant N 55° W 60.28'
C/L M.H. S 50° W 2.25'
Corner is at C/L Leonard Street & Ball Avenue



Signed by *Randy J. Kolehouse*
Surveyor's Michigan License No. 25854

Date 12/1/94