

SURVEY & REMONUMENTATION

APR 28 1995

LAND CORNER RECORDATION CERTIFICATE COMMISSION Filing Requirement of Act 74, Mich. P.A. 1970 KENT COUNTY REMONUMENTATION

STATE OF MICHIGAN
COUNTY OF KENT
RECEIVED FOR RECORD

94 DEC 29 AM 11:12

For corners in

Kent (County)	Located in:	Corner Code #
1. Public Land Survey	T <u>7N</u> R <u>11W</u>	<u>E-10</u>
	T _____ R _____	_____
	T _____ R _____	_____
	T _____ R _____	_____
2. Property Controlling in Section	S _____ T _____ R _____	_____
	S _____ T _____ R _____	_____
3. Miscellaneous Property in Sec.	S _____ T _____ R _____	_____
	S _____ T _____ R _____	_____

W. J. Bond
REG. OF DEEDS

7942

Register of Deeds Stamp & File Number

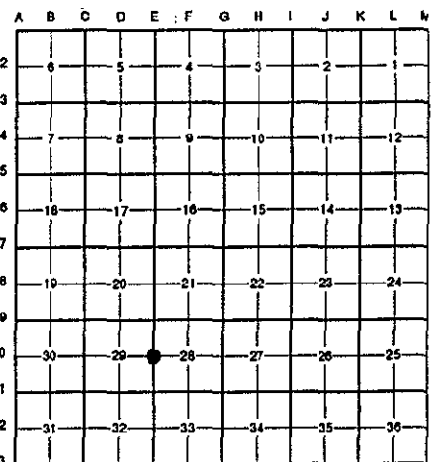
4. Lot No. _____, Recorded Plat _____
5. Private Claims _____

I, Randy Kolehouse, in a field survey on July 14 19 94, do hereby certify that under requirements of P.A. 74 Michigan P.A. of 1970, the corner points mentioned in lines 1 and 2 above were in conformance with regulations and rules therefore as required in the current manual of survey instructions of the United States Department of the Interior, Bureau of Land Management or by a decree of a Court of Law and/or that the corner points mentioned in lines 3, 4 and 5 above were in conformance with the rules of the Michigan Board of Land Surveyors or by a Decree of a Court of Law; established, re-established, monumented, re-monumented, recovered, found as expressed below:

NOTE: Not more than 4 corners, all in the same town and range, may be recorded on this certificate.

A. Description of original monument and accessories and/or subsequent restoration:

E-10	1831	G.L.O. Notes	Mullett	Set Post	P.A. 345 1990 KENT COUNTY
	1892-1955	Survey Records	Williams & Works	Point on M.H.	PEER APPROVED <u>11/3/94</u>
	N/A	Survey Records	City of Grand Rapids	Point on M.H.	CHAIRMAN <u>Henry Tucker</u>
	1984	L.C.R.C. #3773	William R. Byl	Rim Cuts on M.H.	
	1988	L.C.R.C. #4587	Bueche	Rim Cuts on M.H.	



This corner was originally approved by the Kent County Remonumentation Peer Group monumented by William R. Byl on 2/16/84 and was recorded per L.C.R.C. #3773.

B. Description of corner evidence found and/or method applied in restoring or reestablishing corner:

E-10 Reestablished corner at intersection of cut marks on M.H. rim per L.C.R.C.'s #3773 and #4574. This point was established by William R. Byl using 1892-1955 survey records from City of Grand Rapids and Williams & Works. Checks the following witnesses.

L.C.R.C. #3773

L.C.R.C. #4574

SW cor. house fndn. (conc.) N 35° E 100.40'
NE cor. brick wing wall (Aquinas College Phys. Ed. Building)
S 15° W 115.82'
Nail & tag S side p. pole N 55° W 44.62'
Nail & tag S side MBT pole N 60° E 41.91'

E-10 cor. on manhole
SW cor. house fndn. (conc.) N 35° E 100.40'
NE cor. brick wing wall (Aquinas College Phys. Ed. Building)
S 15° W 115.82'
Nail & tag S side p. pole N 55° W 44.62'
Nail & tag S side MBT pole N 60° E 41.91'

The selected location is accepted by me and is generally accepted by professional surveyors as the best available evidence of the position of the original corner.

C. Description of monument for corner and accessories established to perpetuate locating the position of the corner:

E-10 Intersection of Cut Marks on M.H. Rim

SW cor. house fndn. (conc.) N 35° E 100.40'
NE cor. brick wing wall (Aquinas College Phys. Ed. Building) S 15° W 115.82'
Nail & tag S side p. pole N 55° W 44.62'
Nail & tag S side MBT pole N 60° E 41.91'



Signed by *Randy J. Kolehouse*
Surveyor's Michigan License No. 25854

Date 12/12/94