

SURVEY & REMONUMENTATION

STATE OF MICHIGAN
COUNTY OF KENT
RECEIVED FOR RECORD

LAND CORNER RECORDATION CERTIFICATE
Filing Requirement of Act 74, Mich. P.A. 1970
KENT COUNTY REMONUMENTATION

94 DEC -6 AM 9:02

For corners in APR 28 1995

Corner Code # _____

Located in: _____

(County) COMMISSION

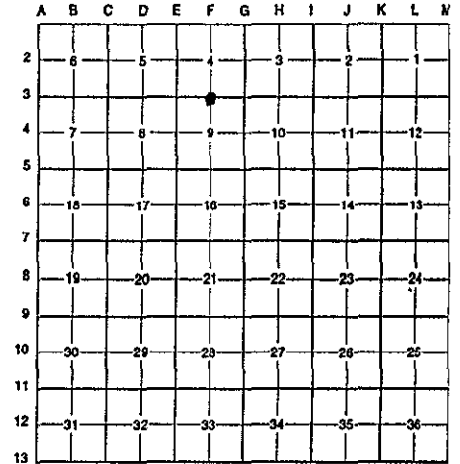
1. Public Land Survey	T <u>7N</u>	R <u>11W</u>	<u>F-3</u>
	T _____	R _____	_____
	T _____	R _____	_____
	T _____	R _____	_____
2. Property Controlling in Section	S _____	T _____	R _____
	S _____	T _____	R _____
3. Miscellaneous Property in Sec.	S _____	T _____	R _____
	S _____	T _____	R _____

Leif J. Bond
REG. OF DEEDS

7803

Register of Deeds Stamp & File Number

4. Lot No. _____, Recorded Plat _____
5. Private Claims _____



I, Randy Kolehouse, in a field survey on June 19 19 94, do hereby certify that under requirements of P.A. 74 Michigan P.A. of 1970, the corner points mentioned in lines 1 and 2 above were in conformance with regulations and rules therefore as required in the current manual of survey instructions of the United States Department of the Interior, Bureau of Land Management or by a decree of a Court of Law and/or that the corner points mentioned in lines 3, 4 and 5 above were in conformance with the rules of the Michigan Board of Land Surveyors or by a Decree of a Court of Law; established, re-established, monumented, re-monumented, recovered, found as expressed below:

NOTE: Not more than 4 corners, all in the same town and range, may be recorded on this certificate.

A. Description of original monument and accessories and/or subsequent restoration:

F-3	1831	G.L.O. Notes	Mullett	Set Post
	1940	Wit. Map	K.C. Surveyor	Monument
	1972	L.C.R.C. #445	Medema Van Kooten	1/2" Iron
	1982	L.C.R.C. #2760	Williams & Works	Fnd. Iron and Mon./Set K.C. Mon.
	1988	L.C.R.C. #4558	Bueche	K.C. Mon.

P.A. 345 1990 KENT COUNTY
PEER APPROVED 11/17/94
CHAIRMAN *[Signature]*

This corner was originally approved by the Kent County Remonumentation Peer Group and monumented by Williams & Works on 2/24/82 and was recorded per L.C.R.C. #2760.

B. Description of corner evidence found and/or method applied in restoring or reestablishing corner:

F-3 Found standard Kent County Monument in the C/L of 3 Mile Road running E-W per L.C.R.C.'s #2760 and #4558 as set by Williams & Works in place of a 1/2" iron over the top of a concrete monument they found which checked the K.C. Surveyor's wit. map and L.C.R.C. #445.

L.C.R.C. #2760

L.C.R.C. #4558

Nail & K.C. remon. tag in side of p. pole S 39.78'
NE cor. of porch fndn. S 50° E 69.32'
NW cor. of porch fndn. S 60° W 90.23'

Nail & K.C. remon. tag in side of p. pole S 39.78'
NE cor. of porch fndn. S 50° E 69.32'
NW cor. of porch fndn. S 60° W 90.23'
C/L bit. road - E & W - 3 Mile Road

The selected location is accepted by me and is generally accepted by professional surveyors as the best available evidence of the position of the original corner.

C. Description of monument for corner and accessories established to perpetuate locating the position of the corner:

F-3 Standard Kent County Monument
Nail & K.C. remon. tag in side of p. pole S 39.78'
NE cor. of porch fndn. S 50° E 69.32'
NW cor. of porch fndn. S 60° W 90.23'
NE cor. of C.B. at B.C. N 44° E 35.94'
Nail & K.C. remon. tag in SW side p. pole N 48° W 68.08'
C/L bit. road - E & W - 3 Mile Road



Signed by *Randy J. Kolehouse* Date 12/1/94
Surveyor's Michigan License No. 25854