

SURVEY & REMONUMENTATION

APR 28 1995

COMMISSION

LAND CORNER RECORDATION CERTIFICATE
 Filing Requirement of Act 74, Mich. P.A. 1970
 KENT COUNTY REMONUMENTATION

STATE OF MICHIGAN
 COUNTY OF KENT
 RECEIVED FOR RECORD

DEC 29 AM 11:13

Tim J. Koles
 REG. OF DEEDS

For corners in

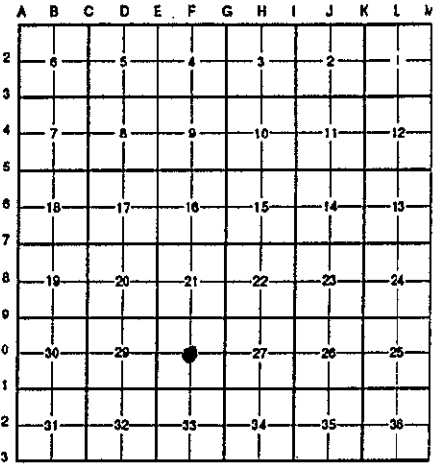
<u>Kent</u> (County)	Located in:	Corner Code #
1. Public Land Survey	T <u>7N</u> R <u>11W</u>	<u>F-10</u>
	T _____ R _____	_____
	T _____ R _____	_____
	T _____ R _____	_____
2. Property Controlling in Section	S _____ T _____ R _____	_____
	S _____ T _____ R _____	_____
3. Miscellaneous Property in Sec.	S _____ T _____ R _____	_____
	S _____ T _____ R _____	_____

7958

Register of Deeds Stamp & File Number

4. Lot No. _____, Recorded Plat _____
 5. Private Claims _____

I, Randy Koleshouse, in a field survey on July 21 19 94, do hereby certify that under requirements of P.A. 74 Michigan P.A. of 1970, the corner points mentioned in lines 1 and 2 above were in conformance with regulations and rules therefore as required in the current manual of survey instructions of the United States Department of the Interior, Bureau of Land Management or by a decree of a Court of Law and/or that the corner points mentioned in lines 3, 4 and 5 above were in conformance with the rules of the Michigan Board of Land Surveyors or by a Decree of a Court of Law; established, re-established, monumented, re-monumented, recovered, found as expressed below:



NOTE: Not more than 4 corners, all in the same town and range, may be recorded on this certificate.

A. Description of original monument and accessories and/or subsequent restoration:

F-10 This corner was not originally set by the G.L.O.

1923	Survey Records	Williams & Works	Gas Pipe
1928	Survey Records	Williams & Works	Monument
1946-1982	Survey Records	Williams & Works	Monument
1974	L.C.R.C. #745	Exxel Engineering	P.K. Nail

B. Description of corner evidence found and/or method applied in restoring or reestablishing corner:

F-10 Found a P.K. nail in Fulton Street running E-W per L.C.R.C. #745, which checks closely to Williams & Works survey records 1923-1982. P.K. Nail is on the N-S 1/4 line and 0.4' South of the E-W 1/4 line. Accepted P.K. nail as the Center Section.

P.A. 345 1990 KENT COUNTY

PEER APPROVED 11/17/94

CHAIRMAN *Randy Koleshouse*

The selected location is accepted by me and is generally accepted by professional surveyors as the best available evidence of the position of the original corner.

C. Description of monument for corner and accessories established to perpetuate locating the position of the corner:

F-10 Replaced P.K. nail with a Standard 4" x 30" Kent County Monument.

- Nail & K.C. remon. tag in NW side p. pole N 70° E 86.85'
- Nail & K.C. remon. tag in NE side 6" Maple S 40° E 51.32'
- P.K. in SW side p. pole N 35° W 49.03'
- C/L water M.H. N 60° W 30.92'
- C/L water M.H. N 22° E 20.04'
- Back conc. curb South 19.63'



Signed by Randy J. Koleshouse
 Surveyor's Michigan License No. 25854

Date 12/12/94