

**SURVEY & REMONUMENTATION**

STATE OF MICHIGAN  
COUNTY OF KENT  
RECEIVED FOR RECORD

LAND CORNER RECORDATION CERTIFICATE  
APR 28 1995 Filing Requirement of Act 74, Mich. P.A. 1970 94 DEC -6 AM 9:02  
KENT COUNTY REMONUMENTATION

For comers in

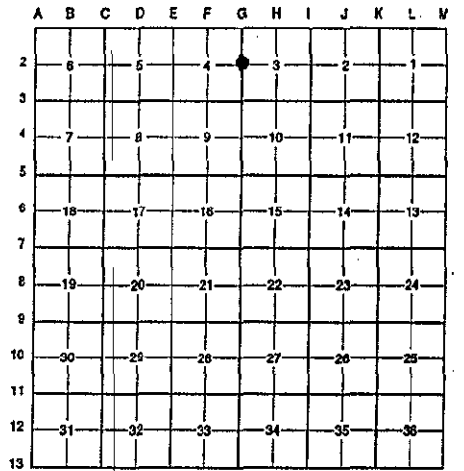
Kent **COMMISSION** in: Corner Code #  
(County)

1. Public Land Survey	T <u>7N</u>	R <u>11W</u>	<u>G-2</u>
	T _____	R _____	_____
	T _____	R _____	_____
	T _____	R _____	_____
2. Property Controlling in Section	S _____	T _____	R _____
	S _____	T _____	R _____
3. Miscellaneous Property in Sec.	S _____	T _____	R _____
	S _____	T _____	R _____

*Lucy Bond*  
REG. OF DEEDS

**7809**  
Register of Deeds Stamp & File Number

4. Lot No. \_\_\_\_\_, Recorded Plat \_\_\_\_\_  
5. Private Claims \_\_\_\_\_



I, Randy Kolehouse, in a field survey on June 20 19 94, do hereby certify that under requirements of P.A. 74 Michigan P.A. of 1970, the corner points mentioned in lines 1 and 2 above were in conformance with regulations and rules therefore as required in the current manual of survey instructions of the United States Department of the interior, Bureau of Land Management or by a decree of a Court of Law and/or that the corner points mentioned in lines 3, 4 and 5 above were in conformance with the rules of the Michigan Board of Land Surveyors or by a Decree of a Court of Law; established, re-established, monumented, re-monumented, recovered, found as expressed below:

**NOTE: Not more than 4 corners, all in the same town and range, may be recorded on this certificate.**

**A. Description of original monument and accessories and/or subsequent restoration:**

G-2	1831	G.L.O. Notes	Mullett	Set Post	P.A. 345 1990 KENT COUNTY
	1943	Wit. Map	K.C. Surveyor	Iron	PEER APPROVED 11/17/94
	1962	Wit. Map	MDOT	Iron	CHAIRMAN <i>Harry Huber</i>
	1971	L.C.R.C. #63	Williams & Works	Iron	
	1982	L.C.R.C. #2763	Williams & Works	Fnd. Iron/Set K.C. Mon.	
	1988	L.C.R.C. #4583	Bueche	K.C. Monument	

This corner was originally approved by the Kent County Remonumentation Peer Group and monumented by Williams & Works on 2/25/82 and was recorded per L.C.R.C. #2763.

**B. Description of corner evidence found and/or method applied in restoring or reestablishing corner:**

G-2 Found standard Kent County Monument in gravel drive 6" below grade per L.C.R.C.'s #2763 and #4583 as set by Williams & Works in place of a 1" pipe over the top of a 1" x 26" pipe 2' below grade which checked 1943 witness map and L.C.R.C. #63.

L.C.R.C. #2763

L.C.R.C. #4583

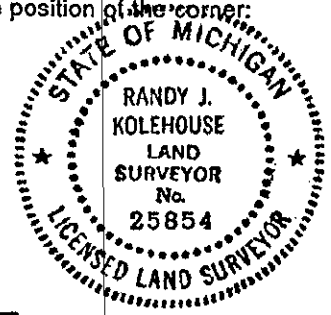
Nail & K.C. remon. tag in W side 36" Oak South 7.63'  
Nail & K.C. remon. tag in S side 16" Oak N 60° E 43.10'  
NW cor. hse. S 30° E 90.95'  
SE cor. hse. fndn. N 45° W 108.12'

Nail & K.C. remon. tag in W side 36" Oak South 7.63'  
Nail & K.C. remon. tag in S side 16" Oak N 60° E 43.10'  
Nail & K.C. remon. tag in SE side p., t., & l. pole S 50° W 61.44' (6' abv. grmd.)  
NW cor. hse. S 30° E 90.95'  
SE cor. hse. fndn. N 45° W 108.12'

The selected location is accepted by me and is generally accepted by professional surveyors as the best available evidence of the position of the original corner.

**C. Description of monument for corner and accessories established to perpetuate locating the position of the corner:**

G-2 Standard Kent County Monument  
Nail & K.C. remon. tag in W side 36" Oak South 7.63'  
Nail & K.C. remon. tag in S side 16" Oak N 60° E 43.10'  
Nail & K.C. remon. tag in SE side p., t., & l. pole S 50° W 61.44' (6' abv. grmd.)  
NW cor. hse. S 30° E 90.95'  
SE cor. hse. fndn. N 45° W 108.12'



Signed by *Randy J. Kolehouse* Date 12/11/94  
Surveyor's Michigan License No. 25854