

SURVEY & REMONUMENTATION

APR 28 1995

LAND CORNER RECORDATION CERTIFICATE Filing Requirement of Act 74, Mich. P.A. 1970 KENT COUNTY REMONUMENTATION

STATE OF MICHIGAN
COUNTY OF KENT
RECEIVED FOR RECORD
94 DEC -6 AM 9:02

For corners in **COMMISSION**

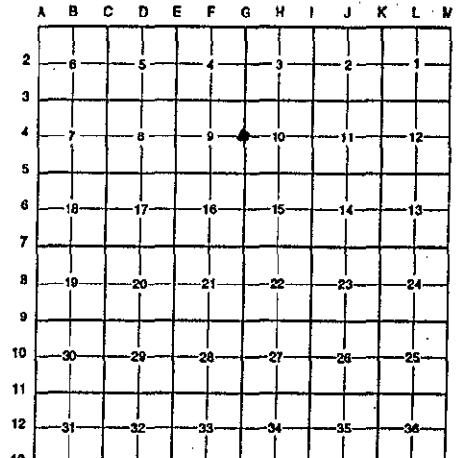
Kent (County)	Located in:	Corner Code #
1. Public Land Survey	T <u>7N</u> R <u>11W</u>	<u>G-4</u>
	T _____ R _____	_____
	T _____ R _____	_____
	T _____ R _____	_____
2. Property Controlling in Section	S _____ T _____ R _____	_____
	S _____ T _____ R _____	_____
3. Miscellaneous Property in Sec.	S _____ T _____ R _____	_____
	S _____ T _____ R _____	_____

Lucy Bond
REG. OF DEEDS

7811
Register of Deeds Stamp & File Number

4. Lot No. _____, Recorded Plat _____
5. Private Claims _____

I, Randy Kolehouse, in a field survey on July 16 19 94, do hereby certify that under requirements of P.A. 74 Michigan P.A. of 1970, the corner points mentioned in lines 1 and 2 above were in conformance with regulations and rules therefore as required in the current manual of survey instructions of the United States Department of the Interior, Bureau of Land Management or by a decree of a Court of Law and/or that the corner points mentioned in lines 3, 4 and 5 above were in conformance with the rules of the Michigan Board of Land Surveyors or by a Decree of a Court of Law; established, re-established, monumented, re-monumented, recovered, found as expressed below:



NOTE: Not more than 4 corners, all in the same town and range, may be recorded on this certificate.

A. Description of original monument and accessories and/or subsequent restoration:

G-4	1831 G.L.O. Notes	Mullet	Set Post
	1939 Wit. Map	K.C. Surveyor	Concrete Monument
	1978 L.C.R.C. #1196	Jonker	Concrete Monument
	1982 L.C.R.C. #2764	Williams & Works	Fnd. Conc. Mon./Set K.C. Mon.
	1985 L.C.R.C. #4159	Prien & Newhof	K.C. Monument
	1988 L.C.R.C. #4585	Bueche	K.C. Monument

P.A. 345 1990 KENT COUNTY
PEER APPROVED 11/3/94
CHAIRMAN *Randy Kolehouse*

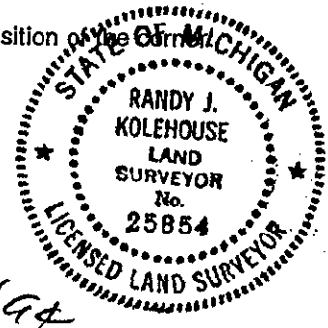
This corner was originally approved by the Kent County Remonumentation Peer Group and monumented by Williams & Works on 2/25/82 and was recorded per L.C.R.C. #2764.

- B. Description of corner evidence found and/or method applied in restoring or reestablishing corner:
- B-4 Found standard Kent County Monument per L.C.R.C.'s #2764 and #4585 as set by Williams & Works in place of a concrete monument they found which checked 1939 K.C. Surveyors wit. map & L.C.R.C. #1196.

<p style="text-align: center;">L.C.R.C. #2764</p> <p>Nail & K.C. remon. tag in side 6" C. Elm N 10° W 38.95'</p> <p>Nail & K.C. remon. tag in side 16" Hickory N 40° E 14.63'</p> <p>Nail & K.C. remon. tag in side 32" Poplar N 80° E 69.78'</p>	<p style="text-align: center;">L.C.R.C. #4585</p> <p>Nail & K.C. remon. tag in side 6" C. Elm N 10° W 38.95'</p> <p>Nail & K.C. remon. tag in side 16" Hickory N 40° E 14.63'</p> <p>Nail & K.C. remon. tag in side 32" Poplar N 80° E 69.78'</p> <p>Nail & K.C. remon. tag in NW side 36" Poplar N 70° E 60.86'</p> <p>Cor. is at N edge of field near the NE cor. thereof</p>
---	---

The selected location is accepted by me and is generally accepted by professional surveyors as the best available evidence of the position of the original corner.

- C. Description of monument for corner and accessories established to perpetuate locating the position of the corner:
- C-4 Standard Kent County Monument
- Nail & K.C. remon. tag in side 6" C. Elm N 10° W 38.95'
- Nail & K.C. remon. tag in side 16" Hickory N 40° E 14.63'
- Nail & K.C. remon. tag in side 32" Poplar N 80° E 69.78'
- Nail & K.C. remon. tag in NW side 36" Poplar N 70° E 60.86'
- Mon. is at NE cor. of field



Signed by *Randy J. Kolehouse*
Surveyor's Michigan License No. 25854

Date 12/1/94