

SURVEY & REMONUMENTATION

APR 28 1995

COMMISSION

LAND CORNER RECORDATION CERTIFICATE

Filing Requirement of Act 74, Mich. P.A. 1970
KENT COUNTY REMONUMENTATION

STATE OF MICHIGAN
COUNTY OF KENT
RECEIVED FOR RECORD

DEC -6 AM 9:02

For corners in

Kent (County)	Located in:	Corner Code #
1. Public Land Survey	T <u>7N</u> R <u>11W</u>	<u>G-6</u>
	T _____ R _____	_____
	T _____ R _____	_____
	T _____ R _____	_____
2. Property Controlling in Section	S _____ T _____ R _____	_____
	S _____ T _____ R _____	_____
3. Miscellaneous Property in Sec.	S _____ T _____ R _____	_____
	S _____ T _____ R _____	_____
4. Lot No. _____, Recorded Plat _____		
5. Private Claims _____		

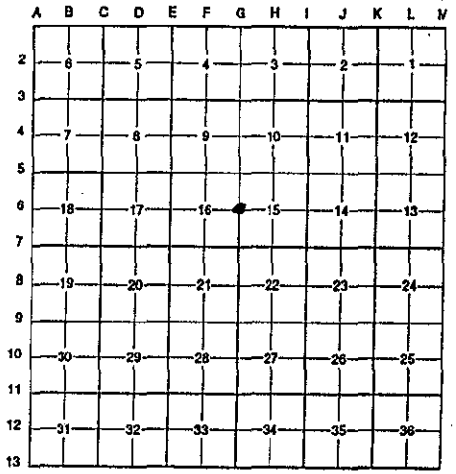
W. J. Hubbard
REG. OF DEEDS

7813

Register of Deeds Stamp & File Number

I, Randy Kolehouse, in a field survey on July 16 19 94, do hereby certify that under requirements of P.A. 74 Michigan P.A. of 1970, the corner points mentioned in lines 1 and 2 above were in conformance with regulations and rules therefore as required in the current manual of survey instructions of the United States Department of the interior, Bureau of Land Management or by a decree of a Court of Law and/or that the corner points mentioned in lines 3, 4 and 5 above were in conformance with the rules of the Michigan Board of Land Surveyors or by a Decree of a Court of Law; established, re-established, monumented, re-monumented, recovered, found as expressed below:

NOTE: Not more than 4 corners, all in the same town and range, may be recorded on this certificate.



A. Description of original monument and accessories and/or subsequent restoration:

G-6	1831	G.L.O. Notes	Mullett	Set Post
	N/A	Wit. Map	K.C. Surveyor	Stone
	N/A	Wit. Map	K.C. Surveyor	2-1/2" Iron
	1978	L.C.R.C. #1276	Medema Van Kooten	Stone with "+"
	1982	L.C.R.C. #2765	Williams & Works	Fnd. Stone/Set K.C. Mon.
	1988	L.C.R.C. #4676	Bueche	K.C. Monument

P.A. 345 1990 KENT COUNTY
PEER APPROVED 11/3/94
CHAIRMAN *W. J. Hubbard*

This corner was originally approved by the Kent County Remonumentation Peer Group and monumented by Williams & Works on 3/22/82 and was recorded per L.C.R.C. #2765.

B. Description of corner evidence found and/or method applied in restoring or reestablishing corner:

G-6 Found standard Kent County Monument per L.C.R.C.'s #2765 and #4676 as set by Williams & Works in place of a stone with "+" cut at remains of building fence corner (fence E & S) on tree row W & S which checked L.C.R.C. #1276.

L.C.R.C. #2765

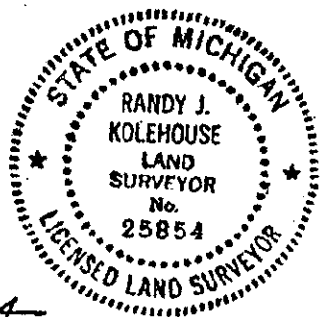
L.C.R.C. #4676

- Nail & K.C. remon. tag in S side 30" tree (dead) N 50° E 10.17'
- Nail & K.C. remon. tag in S side 20" Oak N 85° E 40.21'
- Nail & K.C. remon. tag in NE side 30" Oak S 45° E 15.83'
- Nail & K.C. remon. tag in S side 30" tree (dead) N 50° E 10.17'
- Nail & K.C. remon. tag in S side 20" Oak N 85° E 40.21'
- Nail & K.C. remon. tag in NE side 30" Oak S 45° E 15.83'

The selected location is accepted by me and is generally accepted by professional surveyors as the best available evidence of the position of the original corner.

C. Description of monument for corner and accessories established to perpetuate locating the position of the corner:

- G-6** Standard Kent County Monument
- Nail & K.C. remon. tag in S side 30" tree (dead) N 50° E 10.17'
 - Nail & K.C. remon. tag in S side 20" Oak N 85° E 40.21'
 - Nail & K.C. remon. tag in NE side 30" Oak S 45° E 15.83'
 - Nail & K.C. remon. tag in W side 16" Basswood N 23.32'
 - Nail & K.C. remon. tag in N side 12" Oak S 70° W 41.88'
 - Nail & K.C. remon. tag in S side 14" Maple N 45° E 47.00'



Signed by *Randy J. Kolehouse* Date 12/1/94
Surveyor's Michigan License No. 25854