

SURVEY & REMONUMENTATION

APR 28 1995

COMMISSION

LAND CORNER RECORDATION CERTIFICATE
 Filing Requirement of Act 74, Mich. P.A. 1970
 KENT COUNTY REMONUMENTATION

STATE OF MICHIGAN
 COUNTY OF KENT
 RECEIVED FOR RECORD

94 DEC -6 AM 9:02

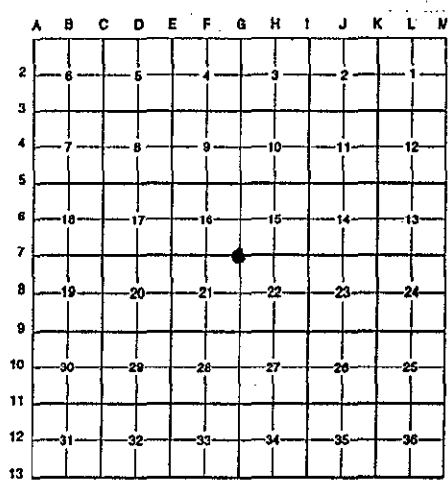
Tim J. Bond
 REG. OF DEEDS

For corners in

Kent (County)	Located in:	Corner Code #
1. Public Land Survey	T <u>7N</u> R <u>11W</u>	<u>G-7</u>
	T _____ R _____	_____
	T _____ R _____	_____
	T _____ R _____	_____
2. Property Controlling in Section	S _____ T _____ R _____	_____
	S _____ T _____ R _____	_____
3. Miscellaneous Property in Sec.	S _____ T _____ R _____	_____
	S _____ T _____ R _____	_____
4. Lot No. _____, Recorded Plat _____		
5. Private Claims _____		

7814
 Register of Deeds Stamp & File Number

I, Randy Kolehouse, in a field survey on May 3 19 94, do hereby certify that under requirements of P.A. 74 Michigan P.A. of 1970, the corner points mentioned in lines 1 and 2 above were in conformance with regulations and rules therefore as required in the current manual of survey instructions of the United States Department of the Interior, Bureau of Land Management or by a decree of a Court of Law and/or that the corner points mentioned in lines 3, 4 and 5 above were in conformance with the rules of the Michigan Board of Land Surveyors or by a Decree of a Court of Law; established, re-established, monumented, re-monumented, recovered, found as expressed below:



NOTE: Not more than 4 corners, all in the same town and range, may be recorded on this certificate.

A. Description of original monument and accessories and/or subsequent restoration:

G-7	1831	G.L.O. Notes	Mullett	Set Post	P.A. 345 1990 KENT COUNTY
	1953	Wit. Map	K.C. Surveyor	Solid Iron	PEER APPROVED <u>11/17/94</u>
	1971	L.C.R.C. #100	Williams & Works	Iron in Mon. BOHARTMAN	<i>Randy Kolehouse</i>
	1982	L.C.R.C. #2766	Williams & Works	Fnd. Solid Iron/Set K.C. Mon.	
	1988	L.C.R.C. #4575	Bueche	K.C. Monument	

This corner was originally approved by the Kent County Remonumentation Peer Group and monumented by Williams & Works on 3/3/82 and was recorded per L.C.R.C. #2766.

B. Description of corner evidence found and/or method applied in restoring or reestablishing corner:

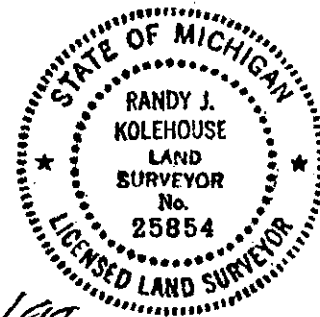
G-7 Found standard Kent County Monument in the C/L of Leonard Street running E-W and Maryland Avenue running South per L.C.R.C.'s #2766 and #4575 as set by Williams & Works in place of a solid iron in monument box (18" below road surface).

L.C.R.C. #2766	L.C.R.C. #4575
Nail & K.C. remon. tag in S'y side p. & T.V. pole N 60° W 58.40'	Nail & K.C. remon. tag in S'y side p. & T.V. pole N 60° W 58.40'
Nail & K.C. remon. tag in S'y side p. & T.V. pole N 60° E 87.50'	Nail & K.C. remon. tag in S'y side p. & T.V. pole N 60° E 87.50'
C/L 4" steel flag pole N 02° E 62.40'	Nail & K.C. remon. tag in NE side MBT pole (new pole) S 30° E 50.87'
	C/L 4" steel flag pole N 02° E 62.40'

The selected location is accepted by me and is generally accepted by professional surveyors as the best available evidence of the position of the original corner.

C. Description of monument for corner and accessories established to perpetuate locating the position of the corner:

G-7 Standard Kent County Monument
 Nail & K.C. remon. tag in S'y side p. & T.V. pole N 60° W 58.40'
 Nail & K.C. remon. tag in S'y side p. & T.V. pole N 60° E 87.50'
 Nail & K.C. remon. tag in NE side MBT pole (new pole) S 30° E 50.87'
 C/L 4" steel flag pole N 02° E 62.40'



Signed by *Randy J. Kolehouse* Date 12/1/94
 Surveyor's Michigan License No. 25854