

SURVEY & REMONUMENTATION

APR 28 1995

COMMISSION

LAND CORNER RECORDATION CERTIFICATE
 Filing Requirement of Act 74, Mich. P.A. 1970
KENT COUNTY REMONUMENTATION

STATE OF MICHIGAN
 COUNTY OF KENT
 RECEIVED FOR RECORD

94 DEC -6 AM 9:02

For corners in

Kent (County)	Located in:	Corner Code #
1. Public Land Survey	T <u>7N</u> R <u>11W</u>	<u>G-10</u>
	T _____ R _____	_____
	T _____ R _____	_____
	T _____ R _____	_____
2. Property Controlling in Section	S _____ T _____ R _____	_____
	S _____ T _____ R _____	_____
3. Miscellaneous Property in Sec.	S _____ T _____ R _____	_____
	S _____ T _____ R _____	_____

W. J. Bond
 REG. OF DEEDS

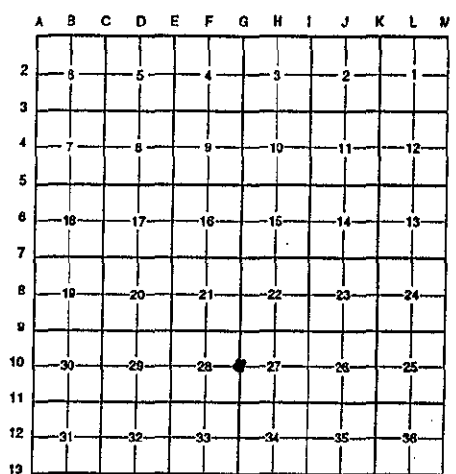
7817

Register of Deeds Stamp & File Number

4. Lot No. _____, Recorded Plat _____
 5. Private Claims _____

I, Randy Kolehouse, in a field survey on March 31 19 94, do hereby certify that under requirements of P.A. 74 Michigan P.A. of 1970, the corner points mentioned in lines 1 and 2 above were in conformance with regulations and rules therefore as required in the current manual of survey instructions of the United States Department of the Interior, Bureau of Land Management or by a decree of a Court of Law and/or that the corner points mentioned in lines 3, 4 and 5 above were in conformance with the rules of the Michigan Board of Land Surveyors or by a Decree of a Court of Law; established, re-established, monumented, re-monumented, recovered, found as expressed below:

NOTE: Not more than 4 corners, all in the same town and range, may be recorded on this certificate.



A. Description of original monument and accessories and/or subsequent restoration:

G-10	1831	G.L.O. Notes	Mullett	Set Post
	1930	Wit. Map	K.C. Surveyor	"+" in Pavement
	1973	L.C.R.C. #572	Williams & Works	P.K. Nail and Tag
	1982	L.C.R.C. #3107	Williams & Works	Fnd. R.R. Spike/Set K.C. Mon.
	1988	L.C.R.C. #4578	Bueche	K.C. Monument

This corner was originally approved by the Kent County Remonumentation Peer Group and monumented by Williams & Works on 10/15/82 and was recorded per L.C.R.C. #3107.

B. Description of corner evidence found and/or method applied in restoring or reestablishing corner:

B-10 Found standard Kent County Monument 3' M/L South of C/L of Fulton Street running E-W and on C/L of Maryland Avenue running N-S per L.C.R.C.'s #3107 and #4578 as set by Williams & Works in place of a P.K. nail and tag over a railroad spike in a concrete roadway they found which checked L.C.R.C. #572.

L.C.R.C. #3107

L.C.R.C. #4578

Nail & K.C. remon. tag in SW side p. pole S 35° E 47.40'
 Nail & K.C. remon. tag in SE side t. pole S 45° W 42.47'
 Nail & K.C. remon. tag in NW side p. pole N 40° W 51.48'
 Top C/L hydrant N 55° W 69.00'
 C/L manhole N 40° E 32.20'
 C/L pavement running E & W is 3.22' North
 Corner is on C/L Maryland Avenue running N & S

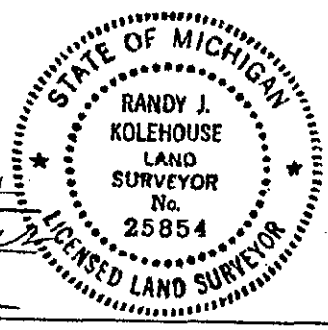
Nail & K.C. remon. tag in SW side p. pole S 35° E 47.40'
 Nail & K.C. remon. tag in SE side t. pole S 45° W 42.47'
 Nail & K.C. remon. tag in NW side p. pole N 40° W 51.48'
 Top C/L hydrant N 55° W 69.00'
 C/L manhole N 40° E 32.20'
 C/L pavement running E & W is 3.22' North
 Corner is on C/L Maryland Avenue running N & S

The selected location is accepted by me and is generally accepted by professional surveyors as the best available evidence of the position of the original corner.

C. Description of monument for corner and accessories established to perpetuate locating the position of the corner:

C-10 Standard Kent County Monument
 Nail & K.C. remon. tag in SW side p. pole S 35° E 47.40'
 Nail & K.C. remon. tag in SE side t. pole S 45° W 42.47'
 Nail & K.C. remon. tag in NW side p. pole N 40° W 51.48'
 Top C/L hydrant N 55° W 69.00'
 C/L manhole N 40° E 32.20'
 C/L pavement running E & W is 3' M/L North
 Corner is on C/L Maryland Avenue running N & S

P.A. 345 1990 KENT COUNTY
 PEER APPROVED 10/12/99
 CHAIRMAN *Harry Kuhn*



igned by Randy J. Kolehouse
 urveyor's Michigan License No. 25854

Date 12/1/94