

\$7.00
\$2.00

SURVEY & REMONUMENTATION

APR 28 1995

LAND CORNER RECORDATION CERTIFICATE

COMMISSION Filing Requirement of Act 74, Mich. P.A. 1970
Kent County Remonumentation

STATE OF MICHIGAN
COUNTY OF KENT
RECEIVED FOR RECORD

94 DEC 16 AM 9:23

W. J. Bond
REG. OF DEEDS

For corners in
Kent
(County)

Located In:

Corner Code #

1. Public Land Survey	T <u>7N</u> R <u>11W</u>	H-3 (S 1/2 cor., Sec 3)
	T _____ R _____	_____
	T _____ R _____	_____
	T _____ R _____	_____
2. Property Controlling in Section	S _____ T _____ R _____	_____
	S _____ T _____ R _____	_____
3. Miscellaneous Property in Sec.	S _____ T _____ R _____	_____
	S _____ T _____ R _____	_____

7850

Register of Deeds Stamp & File Number

4. Lot No. _____, Recorded Plat _____
5. Private Claims _____

I, James C. Glaza, in a field survey on November 21, 19 94, do hereby certify that under requirements of P.A. 74, Michigan P.A. of 1970, the corner points mentioned in lines 1 and 2 above were in conformance with regulations and rules therefore as required in the current manual of survey instructions of the United States Department of the Interior, Bureau of Land Management or by a decree of a Court of Law and/or that the corner points mentioned in lines 3, 4 and 5 above were in conformance with the rules of the Michigan Board of Land Surveyors or by a Decree of a Court of Law; established, re-established, monumented, re-monumented, recovered, found as expressed below:

NOTE: Not more than 4 corners, all in the same town and range, may be recorded on this certificate.

A. Description of original monument and accessories and/or subsequent restoration:

H-3	1831	G.L.O.	Mullett	set post	
	1973	Kent Co. Wit.	-----	"T" iron	P.A. 345 1990 KENT COUNTY
	1973	LCRC #596	Bonnema	"T" iron	PEER APPROVED <u>10/12/94</u>
	1975	LCRC #866	Nederveld	"T" iron	CHAIRMAN <u>Harry Huber</u>
	1982	LCRC #2769	Merdzinski	set Kent Co. Mon.	
	1992	LCRC #6379	Marschall	Kent County Monument	

The position of this corner was previously approved by the Kent County Remonumentation Peer Group, monumented by John A. Merdzinski on March 5, 1982 and was recorded per LCRC #2769.

B. Description of corner evidence found and/or method applied in restoring or reestablishing corner:

H-3 Found standard Kent Co. Mon. (Harrison) per witnesses from LCRC #2769 as set by John A. Merdzinski in place of a "T" iron on top of a concrete monument he found and per witnesses from LCRC #6379.

LCRC # 6379

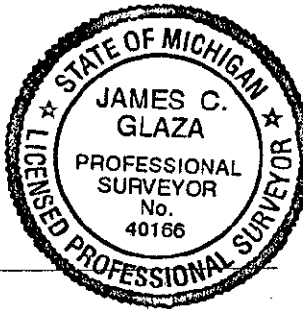
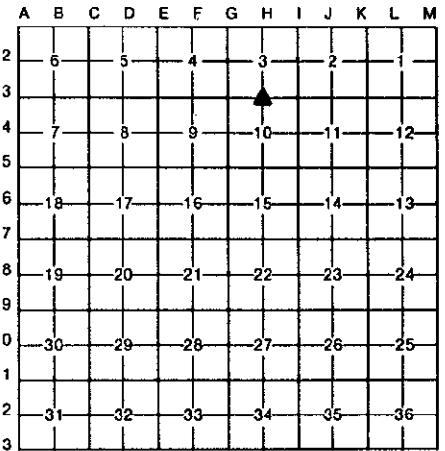
K.C. remon tag & nail in NE side U.P.	N47°W	36.66'
SE corner (brick) house #2791	N16°W	101.17'
SW corner house foundation #2803	N11°E	89.82'
K.C. remon tag & nail in E side U.P.	S10°W	129.21'
Top C/L nut hyd.	N60°E	68.44'
NW corner 2' x 2' concrete flag pole base	S43°E	127.28'
On C/L of E-W bit. / On C/L of Bit. to South		

The selected location is accepted by me and is generally accepted by professional surveyors as the best available evidence of the position of the original corner.

C. Description of monument for corner and accessories established to perpetuate locating the position of the corner:

H-3 Standard Kent County Monument

K.C. remon tag & nail in NE side U.P.	N47°W	36.66'
SE corner (brick) house #2791	N16°W	101.17'
SW corner house foundation #2803	N11°E	89.82'
K.C. remon tag & nail in E side U.P.	S10°W	129.21'
Top C/L nut hyd.	N60°E	68.44'
NW corner 2' x 2' concrete flag pole base	S43°E	127.28'
On C/L of E-W bit. / On C/L of bit. to South		



Signed by James C. Glaza
Glaza & Associates, Inc. 40166
Surveyor's Michigan License No. _____

Date December 5, 1994