

\$7.00
\$2.00

SURVEY & REMONUMENTATION

APR 28 1995

LAND CORNER RECORDATION CERTIFICATE 94

COMMISSION

Filing Requirement of Act 74, Mich. P.A. 1970
Kent County Remonumentation

STATE OF MICHIGAN
COUNTY OF KENT
RECEIVED FOR RECORD
DEC 16 AM 9:23

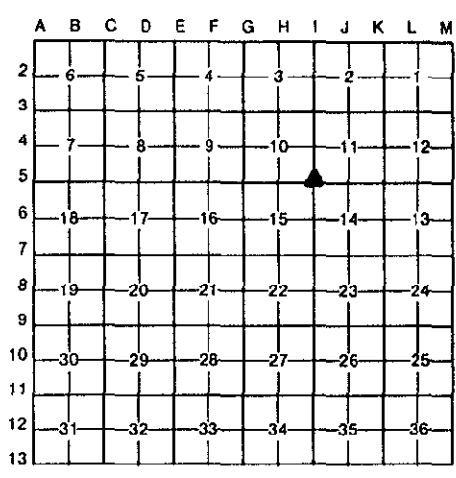
W. J. Glaza
REG. OF DEEDS

7859

Register of Deeds Stamp & File Number

For corners in Kent (County) Located In: _____ Corner Code # _____

1. Public Land Survey	T <u>7N</u> R <u>11W</u>	I-5 (SE cor, Sec 10)
	T _____ R _____	_____
	T _____ R _____	_____
	T _____ R _____	_____
2. Property Controlling in Section	S _____ T _____ R _____	_____
	S _____ T _____ R _____	_____
3. Miscellaneous Property in Sec.	S _____ T _____ R _____	_____
	S _____ T _____ R _____	_____
4. Lot No. _____, Recorded Plat _____		
5. Private Claims _____		



I, James C. Glaza, in a field survey on November 23, 19 94, do hereby certify that under requirements of P.A. 74, Michigan P.A. of 1970, the corner points mentioned in lines 1 and 2 above were in conformance with regulations and rules therefore as required in the current manual of survey instructions of the United States Department of the Interior, Bureau of Land Management or by a decree of a Court of Law and/or that the corner points mentioned in lines 3, 4 and 5 above were in conformance with the rules of the Michigan Board of Land Surveyors or by a Decree of a Court of Law; established, re-established, monumented, re-monumented, recovered, found as expressed below:

NOTE: Not more than 4 corners, all in the same town and range, may be recorded on this certificate.

A. Description of original monument and accessories and/or subsequent restoration:

I-5	1831	G.L.O.	Mullett	set post
	1973	Kent Co. Wit.	-----	iron
	1973	LCRC #492	Spicer	iron
	1982	LCRC #2774	Merdzinski	set Kent Co. Mon.
	1993	LCRC #6743	Roon	set Kent Co. Mon.

The position of this corner was previously approved by the Kent County Remonumentation Peer Group, monumented by John A. Merdzinski on March 9, 1982 as was recorded per LCRC #2774.

B. Description of corner evidence found and/or method applied in restoring or reestablishing corner:

I-5 Found standard Kent Co. Mon. (Harrison) per witnesses for LCRC #6743 as set by Russell L. Roon. Kent Co. Mon. set in 1982 was destroyed due to road construction.

LCRC #6743

Nail & tag in P.P.	S50°W	68.09'
NW corner of C.B.	S15°E	49.42'
SW corner of C.B.	N80°E	61.74'
NW corner of C.B.	S65°E	58.96'

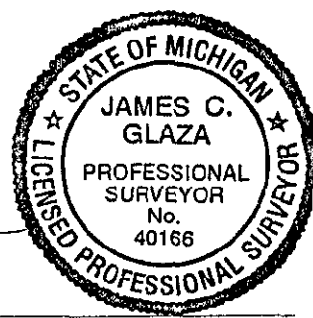
The selected location is accepted by me and is generally accepted by professional surveyors as the best available evidence of the position of the original corner.

C. Description of monument for corner and accessories established to perpetuate locating the position of the corner:

I-5 Standard Kent County Monument

Nail & tag in P.P.	S50°W	68.04'
NW corner of C.B.	S15°E	49.41'
SW corner of C.B.	N80°E	61.72'
NW corner of C.B.	S65°E	58.96'

P.A. 345 1980 KENT COUNTY
PEER APPROVED 10/12/94
CHAIRMAN *[Signature]*



Signed by James C. Glaza
Glaza & Associates, Inc.
Surveyor's Michigan License No. 40166

Date December 7, 1994