

**SURVEY & REMONUMENTATION**

APR 28 1995

**LAND CORNER RECORDATION CERTIFICATE**  
**Filing Requirement of Act 74, Mich. P.A. 1970**  
**KENT COUNTY REMONUMENTATION**

STATE OF MICHIGAN  
 COUNTY OF KENT  
 RECEIVED FOR RECORD  
 94 DEC -6 AM 9:05

For corners in

Kent  
 (County)

**COMMISSION**

Located in:

Corner Code #

- |                                    |             |              |            |
|------------------------------------|-------------|--------------|------------|
| 1. Public Land Survey              | T <u>7N</u> | R <u>11W</u> | <u>1-9</u> |
|                                    | T _____     | R _____      | _____      |
|                                    | T _____     | R _____      | _____      |
|                                    | T _____     | R _____      | _____      |
| 2. Property Controlling In Section | S _____     | T _____      | R _____    |
|                                    | S _____     | T _____      | R _____    |
| 3. Miscellaneous Property in Sec.  | S _____     | T _____      | R _____    |
|                                    | S _____     | T _____      | R _____    |

*W. J. Bond*  
 REG. OF DEEDS

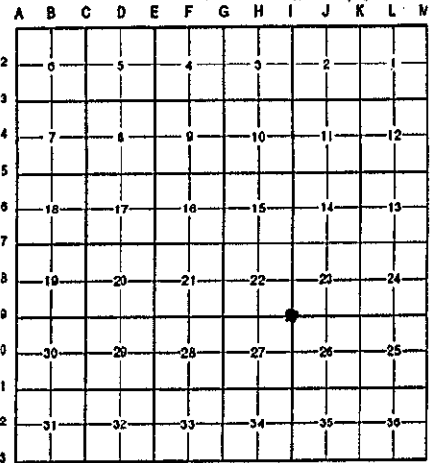
7822

Register of Deeds Stamp & File Number

4. Lot No. \_\_\_\_\_, Recorded Plat \_\_\_\_\_  
 5. Private Claims \_\_\_\_\_

I, Randy Kolehouse, in a field survey on June 21 19 94, do hereby certify that under requirements of P.A. 74 Michigan P.A. of 1970, the corner points mentioned in lines 1 and 2 above were in conformance with regulations and rules therefore as required in the current manual of survey instructions of the United States Department of the Interior, Bureau of Land Management or by a decree of a Court of Law and/or that the corner points mentioned in lines 3, 4 and 5 above were in conformance with the rules of the Michigan Board of Land Surveyors or by a Decree of a Court of Law; established, re-established, monumented, re-monumented, recovered, found as expressed below:

**NOTE: Not more than 4 corners, all in the same town and range, may be recorded on this certificate.**



**A. Description of original monument and accessories and/or subsequent restoration:**

I-9	1831	G.L.O. Notes	Mullett	Set Post
	1900-1976	Survey Records	Williams & Works	Cor. in Bridge Deck
	1984	L.C.R.C. #3664	Exxel Engineering	R.R. Spike
	1985	L.C.R.C. #4289	William R. Byl	Fnd. R.R. Spike/Set
	1992	L.C.R.C. #6384	Marschall	K.C. Mon.

P.A. 345 1990 KENT COUNTY  
 PEER APPROVED 11/3/94  
 CHAIRMAN *Randy Kolehouse*  
 K.C. Mon.

This corner was originally approved by the Kent County Remonumentation Peer Group monumented by William R. Byl on 1/4/85 and was recorded per L.C.R.C. #4289.

**B. Description of corner evidence found and/or method applied in restoring or reestablishing corner:**

I-9 Found standard Kent County Monument per L.C.R.C.'s #4289 and #6384 as set by William R. Byl under railroad overpass under a railroad spike in bridge deck he found which was set by Exxel Engineering using MDOT survey records.

*Below*

L.C.R.C. #4289

L.C.R.C. #6384

- "V" cut in face of concrete bridge pillar (center) N 00° W 3.38'
- "V" cut in face of concrete bridge pillar (2nd from E) N 90° E 17.47'
- "V" cut in face of concrete bridge pillar (center) S 00° W 43.81'
- "V" cut in face of concrete bridge pillar (westerly) S 40° W 51.79'
- Southerly edge of Northerly Rail (@ 90° to tracks) S 15° W 17.14'

- "V" cut in face of concrete bridge pillar (center) N 00° W 3.38'
- "V" cut in face of concrete bridge pillar (2nd from E) N 90° E 17.48'
- "V" cut in face of concrete bridge pillar (center) S 00° W 43.79'
- "V" cut in face of concrete bridge pillar (westerly) S 40° W 51.80'
- Southerly edge of Northerly Rail (@ 90° to tracks) S 15° W 17.14'
- Mon. is set in lower con. edge of North Bridge Embankment

The selected location is accepted by me and is generally accepted by professional surveyors as the best available evidence of the position of the original corner.

**C. Description of monument for corner and accessories established to perpetuate locating the position of the corner:**

- I-9 Standard Kent County Monument
- "V" cut in face of concrete bridge pillar (center) N 00° W 3.38'
  - "V" cut in face of concrete bridge pillar (2nd from E) N 90° E 17.48'
  - "V" cut in face of concrete bridge pillar (center) S 00° W 43.79'
  - "V" cut in face of concrete bridge pillar (westerly) S 40° W 51.80'
  - Southerly edge of Northerly Rail (@ 90° to tracks) S 15° W 17.14'



Signed by *Randy J. Kolehouse*  
 Surveyor's Michigan License No. 25854

Date 12/1/94