

SURVEY & REMONUMENTATION

APR 28 1995

COMMISSION

LAND CORNER RECORDATION CERTIFICATE
 Filing Requirement of Act 74, Mich. P.A. 1970
 KENT COUNTY REMONUMENTATION

STATE OF MICHIGAN
 COUNTY OF KENT
 RECEIVED FOR RECORD

94 DEC -6 AM 9:05

For corners in

Kent (County)	Located in:	Corner Code #
1. Public Land Survey	T <u>7N</u> R <u>11W</u>	<u>K-11</u>
	T _____ R _____	_____
	T _____ R _____	_____
	T _____ R _____	_____
2. Property Controlling in Section	S _____ T _____ R _____	_____
	S _____ T _____ R _____	_____
3. Miscellaneous Property in Sec.	S _____ T _____ R _____	_____
	S _____ T _____ R _____	_____

Lucy J. Bond
 REG. OF DEEDS

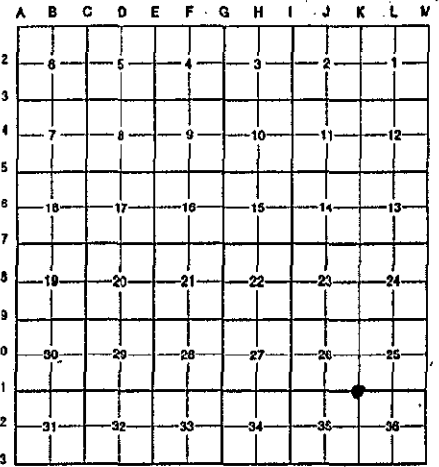
7831

Register of Deeds Stamp & File Number

4. Lot No. _____, Recorded Plat _____
 5. Private Claims _____

I, Randy Kolehouse, in a field survey on July 25 19 94, do hereby certify that under requirements of P.A. 74 Michigan P.A. of 1970, the corner points mentioned in lines 1 and 2 above were in conformance with regulations and rules therefore as required in the current manual of survey instructions of the United States Department of the interior, Bureau of Land Management or by a decree of a Court of Law and/or that the corner points mentioned in lines 3, 4 and 5 above were in conformance with the rules of the Michigan Board of Land Surveyors or by a Decree of a Court of Law; established, re-established, monumented, re-monumented, recovered, found as expressed below:

NOTE: Not more than 4 corners, all in the same town and range, may be recorded on this certificate.



A. Description of original monument and accessories and/or subsequent restoration:

K-11	1831	G.L.O. Notes	Mullett	Set Post
	N/A	Wit. Map	K.C. Surveyor	Iron Rod
	1971	L.C.R.C. #24	MDOT	3/8" Iron Rod and Stone
	1980	L.C.R.C. #1464	Williams & Works	Fnd. 3/8" Iron/Set K.C. Mon.
	1992	L.C.R.C. #6401	Marschall	K.C. Monument

P.A. 345 1990 KENT COUNTY
 PEER APPROVED 11/3/94
 CHAIRMAN *[Signature]*

This corner was originally approved by the Kent County Remonumentation Peer Group and monumented by Williams & Works on 10/29/80 and was recorded per L.C.R.C. #1464.

B. Description of corner evidence found and/or method applied in restoring or reestablishing corner:

K-11 Found standard Kent County Monument per L.C.R.C.'s #1464 and #6401 as set by Williams & Works in place of a 3/8" iron rod they found which checked K.C. Surveyor's records and L.C.R.C. #24.

L.C.R.C. #1464

L.C.R.C. #6401

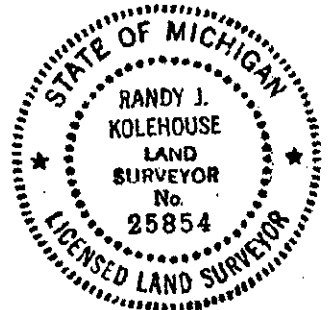
Nail & K.C. remon. tag N side 22" Wild Cherry S 55° W 44.88'
 Nail & K.C. remon. tag E side p. pole N 15° W 12.68'
 Nail & K.C. remon. tag E side 24" Oak S 25° E 17.44'

Nail & tag N side 16" Hickory S 65° E 19.44'
 Nail & tag NE side 28" Oak S 25° E 17.40'
 Nail & tag N side 24" W Cherry (5' above grd.) S 55° W 44.87'
 Nail & tag E side p. pole N 15° W 12.70'

The selected location is accepted by me and is generally accepted by professional surveyors as the best available evidence of the position of the original corner.

C. Description of monument for corner and accessories established to perpetuate locating the position of the corner:

K-11 Standard Kent County Monument
 Nail & K.C. remon. tag N side 16" Hickory S 65° E 19.44'
 Nail & K.C. remon. tag NE side 28" Oak S 25° E 17.40'
 Nail & K.C. remon. tag N side 24" W Cherry (5' above grd.) S 55° W 44.87'
 Nail & K.C. remon. tag E side p. pole N 15° W 12.70'



Signed by *Randy J. Kolehouse* Date 12/1/94
 Surveyor's Michigan License No. 25854