

SURVEY & REMONUMENTATION

KENT COUNTY REMONUMENTATION

APR 28 1995

LAND CORNER RECORDATION CERTIFICATE

COMMISSION

Filing Requirement of Act 74, Mich. P.A. 1970

STATE OF MICHIGAN
COUNTY OF KENT
RECEIVED FOR RECORD
94 NOV 28 AM 11:43

For corners in
KENT COUNTY
(County)

	Located In:	Corner Code #/
1. Public Land Survey	T <u>7N</u> R <u>12W</u>	<u>A-10</u>
	T _____ R _____	_____
	T _____ R _____	_____
	T _____ R _____	_____
2. Property Controlling in Section	S _____ T _____ R _____	_____
	S _____ T _____ R _____	_____
3. Miscellaneous Property in Sec.	S _____ T _____ R _____	_____
	S _____ T _____ R _____	_____

W. R. Byl
REG. OF DEEDS

7277

Register of Deeds Stamp & File Number

4. Lot No. _____, Recorded Plat _____
5. Private Claims _____

	A	B	C	D	E	F	G	H	I	J	K	L	M
2	6		5		4		3		2		1		
3													
4	7		8		9		10		11		12		
5													
6	18		17		16		15		14		13		
7													
8	19		20		21		22		23		24		
9													
10	30		29		28		27		26		25		
11													
12	31		32		33		34		35		36		
13													

I, William R. Byl, in a field survey on Sept. 1, 19 94, do hereby certify that under requirements of P.A. 74, Michigan P.A. of 1970, the corner points mentioned in lines 1 and 2 above were in conformance with regulations and rules therefore as required in the current manual of survey instructions of the United States Department of the Interior, Bureau of Land Management or by a decree of a Court of Law and/or that the corner points mentioned in lines 3, 4 and 5 above were in conformance with the rules of the Michigan Board of Land Surveyors or by a Decree of a Court of Law; established, re-established, monumented, re-monumented, recovered, found as expressed below:

NOTE: Not more than 4 corners, all in the same town and range, may be recorded on this certificate.

A. Description of original monument and accessories and/or subsequent restoration:

A-10	1836	GLO	Brookfield	Set Post (common with M-10, T7N, R13W)
		Kent Co. Wit.		Leaded Stone
	1973	LCRC #615	Verba	Leaded Stone
	1975	LCRC #798	McCloskey	Leaded Stone
	1980	LCRC #1466	Merdzinski	Set Kent County Monument
	1990	LCRC #5504	Starr	Kent County Monument

The position of this corner was previously approved by the Kent County Remonumentation Peer Group, monumented by John A. Merdzinski on 10/30/80 and was recorded per LCRC #1466

B. Description of corner evidence found and/or method applied in restoring or reestablishing corner:

A-10 Found standard Kent Co. Mon. (Harrison) per witnesses from above LCRC as set by John A. Merdzinski in place of the Leaded Stone he found. Said Leaded Stone checks with Kent Co. Wit. and LCRC's #615 & #798.

LCRC #1466

LCRC #5504

KC tag & nail P. Pole	S55°E	8.22'	used most of the same witnesses as LCRC #1466
KC tag & nail P. Pole	N10°E	31.37'	
KC tag & nail 20" Oak	North	45.05'	
KC tag & nail Meter Pole	N30°W	17.33'	
KC tag & nail 20" Oak	S05°W	65.17'	
KC tag & nail Guy Pole	S80°E	31.42'	
KC tag & nail 20" Oak	S30°E	85.93'	

The selected location is accepted by me and is generally accepted by professional surveyors as the best available evidence of the position of the original corner.

P.A. 345 1990 KENT COUNTY

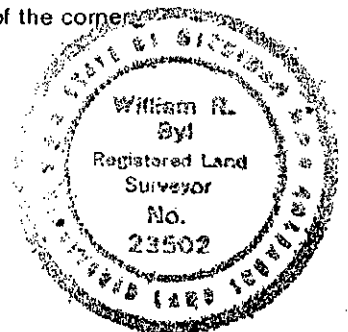
PEER APPROVED 11/17/94

CHAIRMAN *Harry Huber*

C. Description of monument for corner and accessories established to perpetuate locating the position of the corner:

A-10 Standard Kent County Monument

KC Remon. tag & nail SW side P. Pole	S55°E	8.22'
KC Remon. tag & nail E. side P. Pole	N10°E	31.41'
New KC Remon. tag & nail E. side 24" Oak	N00°E	44.46'
KC Remon. tag & nail W. side Elec. Meter Pole	N30°W	17.29'
KC Remon. tag & nail S. side Guy Pole	S80°E	31.42'
New KC Remon. tag & nail NE side 30" Oak	S30°E	85.86'



Signed by *W. R. Byl* Surveyor's Michigan License No. 23502

Date 11-17-94