

SURVEY & REMONUMENTATION

KENT COUNTY REMONUMENTATION

APR 28 1995

LAND CORNER RECORDATION CERTIFICATE

Filing Requirement of Act 74, Mich. P.A. 1970

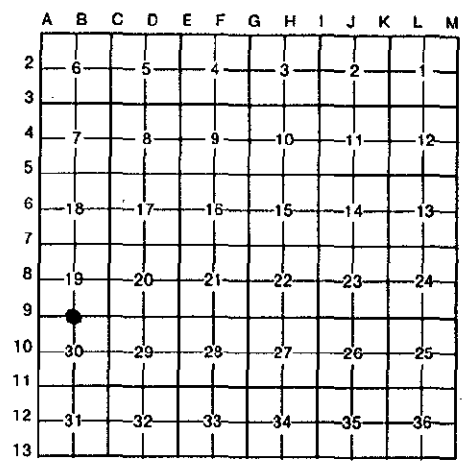
STATE OF MICHIGAN
COUNTY OF KENT
RECEIVED FOR RECORD
94 NOV 28 AM 11:45
W. R. Byl
REG. OF DEEDS

For corners in **COMMISSION**
KENT COUNTY
(County)

	Located In:	Corner Code #
1. Public Land Survey	T <u>7N</u> R <u>12W</u>	<u>B-9</u>
	T _____ R _____	_____
	T _____ R _____	_____
	T _____ R _____	_____
2. Property Controlling in Section	S _____ T _____ R _____	_____
	S _____ T _____ R _____	_____
3. Miscellaneous Property in Sec.	S _____ T _____ R _____	_____
	S _____ T _____ R _____	_____
4. Lot No. _____, Recorded Plat _____		
5. Private Claims _____		

7284
Register of Deeds Stamp & File Number

I, William R. Byl, in a field survey on July 21, 19 94, do hereby certify that under requirements of P.A. 74, Michigan P.A. of 1970, the corner points mentioned in lines 1 and 2 above were in conformance with regulations and rules therefore as required in the current manual of survey instructions of the United States Department of the Interior, Bureau of Land Management or by a decree of a Court of Law and/or that the corner points mentioned in lines 3, 4 and 5 above were in conformance with the rules of the Michigan Board of Land Surveyors or by a Decree of a Court of Law; established, re-established, monumented, re-monumented, recovered, found as expressed below:



NOTE: Not more than 4 corners, all in the same town and range, may be recorded on this certificate.

A. Description of original monument and accessories and/or subsequent restoration:

B-9	1837	GLO	Whitcomb	Set Post
	1935	Kent Co. Wit		State Monument in conc.
	1975	LCRC #872	Nederveld	PK Nail
	1981	LCRC #2027	Hackbardt	Set Kent County Monument
	1990	LCRC #5511	Starr	Kent County Monument

The position of this corner was previously approved by the Kent County Remonumentation Peer Group, monumented by Glen S. Hackbardt on 6/8/81 and was recorded per LCRC #2027

B. Description of corner evidence found and/or method applied in restoring or reestablishing corner:

B-9 Found standard Kent Co. Mon. (Harrison) per witnesses from above LCRC as set by Glen S. Hackbardt in place of the PK Nail over 3/4" Iron in Mon. Box he found. Said PK Nail over 3/4" Iron in Mon. box checks with LCRC #872.

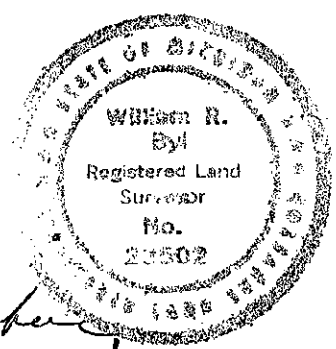
LCRC #2027			LCRC #5511		
KC Nail & tag Guy Pole	N50°E	76.71'	Nail & KC tag Guy Pole	N50°E	76.21'
KC Nail & tag Guy Pole	N45°W	76.96'	Nail & KC tag Guy Pole	N45°W	76.90'
SW cor. CB header	N40°W	74.18'	SW cor. CB header	N40°W	73.97'
NW cor. CB header	S40°W	68.13'	NW cor. CB header	S40°W	68.09'
SE cor. CB header	S40°E	69.56'	SE cor. CB header	S40°E	69.53'

The selected location is accepted by me and is generally accepted by professional surveyors as the best available evidence of the position of the original corner.

C. Description of monument for corner and accessories established to perpetuate locating the position of the corner:

B-9 Standard Kent County Monument

Nail & KC Remon. tag SE side Guy Pole	N50°E	76.21'
Nail & KC Remon. tag SW side Guy Pole	N45°W	76.90'
SW cor. CB header	N40°W	74.19'
NW cor. CB header	S40°W	69.25'
SE cor. CB header	S40°E	69.56'



P.A. 345 1980 KENT COUNTY
PEER APPROVED 11/17/94
CHAIRMAN Harry K. Huber

Signed by W. R. Byl Date 11-17-94
Surveyor's Michigan License No. 23502