

SURVEY & REMONUMENTATION

KENT COUNTY REMONUMENTATION

STATE OF MICHIGAN
COUNTY OF KENT
RECEIVED FOR RECORD

APR 28 1995

LAND CORNER RECORDATION CERTIFICATE
Filing Requirement of Act 74, Mich. P.A. 1970

NOV 28 AM 11:46

For corners in
KENT COUNTY COMMISSION
(County)

Located In:	Corner Code #:
T <u>7N</u> R <u>12W</u>	<u>D-5</u>
T _____ R _____	_____
T _____ R _____	_____
T _____ R _____	_____
2. Property Controlling in Section S _____ T _____ R _____	_____
S _____ T _____ R _____	_____
3. Miscellaneous S _____ T _____ R _____	_____
Property in Sec. S _____ T _____ R _____	_____

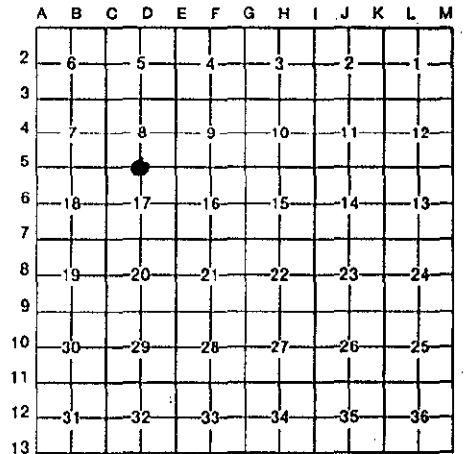
William R. Byl
REG. OF DEEDS

7299

Register of Deeds Stamp & File Number

4. Lot No. _____, Recorded Plat _____
5. Private Claims _____

I, William R. Byl, in a field survey on July 5, 19 94, do hereby certify that under requirements of P.A. 74, Michigan P.A. of 1970, the corner points mentioned in lines 1 and 2 above were in conformance with regulations and rules therefore as required in the current manual of survey instructions of the United States Department of the Interior, Bureau of Land Management or by a decree of a Court of Law and/or that the corner points mentioned in lines 3, 4 and 5 above were in conformance with the rules of the Michigan Board of Land Surveyors or by a Decree of a Court of Law; established, re-established, monumented, re-monumented, recovered, found as expressed below:



NOTE: Not more than 4 corners, all in the same town and range, may be recorded on this certificate.

A. Description of original monument and accessories and/or subsequent restoration:

D-5	1837	GLO	Whitcomb	Set Post
		Kent Co. Wit.		Monument & Iron
	1975	LCRC #810	Spicer	3/4" Iron (Irons in LCRC #368 & #664 in error)
	1980	LCRC #1447	Merdzinski	Set Kent County Monument
	1990	LCRC #5527	Starr	Kent County Monument
	1991	LCRC #6189	McCloskey	Kent County Monument

The position of this corner was previously approved by the Kent County Remonumentation Peer Group, monumented by John A. Merdzinski on 10/24/80 and was recorded per LCRC #1447

B. Description of corner evidence found and/or method applied in restoring or reestablishing corner:

D-5 Found standard Kent Co. Mon. (Harrison) per witnesses from above LCRC as set by John A Merdzinski in place of the 3/4" Iron over another 3/4" Iron he found over the remains of a Conc. Mon. Said Irons and Conc. Mon. check with Kent Co. Wit. & LCRC #810 LCRC #1447

Nail & tag MBT Pole	North	20.60'	KC Nail & tag 26" Maple	S75°W	89.55'				
Nail & tag P. Pole	S05°E	59.20'	Top center hydrant	N80°W	135.51'				
Nail & tag 24" Poplar	S60°W	41.66'	KC Nail & tag P. Pole	S60°E	149.49'				
Nail & tag Wood Gate Post	N35°E	25.32'	SE cor. Hse. #3619	N35°W	91.47'				
Nail & tag Wood Gate Post	S50°E	31.87'							
NE cor. hse. #3620 fnd.	S35°W	118.63'							

The selected location is accepted by me and is generally accepted by professional surveyors as the best available evidence of the position of the original corner.

C. Description of monument for corner and accessories established to perpetuate locating the position of the corner:

D-5 Standard Kent County Monument

Nail & KC Remon. tag N. side 26" Maple	S75°W	89.55'
Top center hydrant	N80°W	135.51'
Nail & KC Remon. tag N. side P. Pole	S60°E	149.49'
SE cor. Hse. #3619	N35°W	91.47'
SE cor. CB header	S50°E	29.57'
NE cor. CB header	N50°E	30.08'
On C/L E-W Bit. Rd.		



William R. Byl

PEER APPROVED 11/17/94
CHAIRMAN [Signature]
11-17-94

Signed by _____ Date _____
Surveyor's Michigan License No. 23502