

SURVEY & REMONUMENTATION

APR 28 1995

KENT COUNTY REMONUMENTATION

STATE OF MICHIGAN
COUNTY OF KENT
RECEIVED FOR RECORD

COMMISSION

LAND CORNER RECORDATION CERTIFICATE
Filing Requirement of Act 74, Mich. P.A. 1970

94 NOV 28 AM 11:47

For corners in
KENT COUNTY
(County)

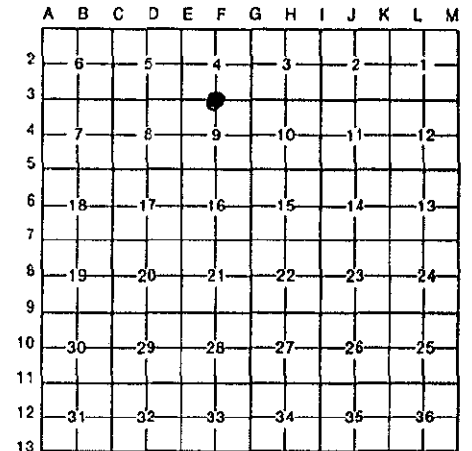
Located In:	Corner Code #
T 7N R 12W	F-3
T R	
T R	
T R	
S T R	
S T R	
S T R	
S T R	

W. R. Byl
REG. OF DEEDS

7313

Register of Deeds Stamp & File Number

4. Lot No. _____, Recorded Plat _____
5. Private Claims _____



I, William R. Byl, in a field survey on July 5, 19 94, do hereby certify that under requirements of P.A. 74, Michigan P.A. of 1970, the corner points mentioned in lines 1 and 2 above were in conformance with regulations and rules therefore as required in the current manual of survey instructions of the United States Department of the Interior, Bureau of Land Management or by a decree of a Court of Law and/or that the corner points mentioned in lines 3, 4 and 5 above were in conformance with the rules of the Michigan Board of Land Surveyors or by a Decree of a Court of Law, established, re-established, monumented, re-monumented, recovered, found as expressed below:

NOTE: Not more than 4 corners, all in the same town and range, may be recorded on this certificate.

A. Description of original monument and accessories and/or subsequent restoration:

F-3	1837	GLO	Whitcomb	Set Post
		Kent Co. Wit.		1" Iron
	1974	LCRC #708	Bonnema	1" Iron in Mon. Box
	1975	LCRC #869	Nederveld	1 1/4" Iron in Mon. Box
	1977	LCRC #1081	Campbell	"T" Iron (set from accessories)
	1981	LCRC #1855	Tobin	Set Kent County Monument
	1990	LCRC #5543	Starr	Kent County Monument

P.A. 345 1990 KENT COUNTY
PEER APPROVED 11/17/94
CHAIRMAN *Harry Huber*

The position of this corner was previously approved by the Kent County Remonumentation Peer Group, monumented by Douglas J. Tobin on 4/21/81 and was recorded per LCRC #1855

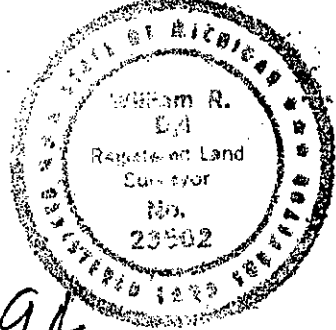
B. Description of corner evidence found and/or method applied in restoring or reestablishing corner:
F-3 Found standard Kent Co. Mon. (Harrison) per witnesses from above LCRC as set by Douglas J. Tobin in place of the 1" Iron he found in a Mon. Box. Said 1" Iron in Mon. Box checks with Kent Co. Wit. and LCRC's #708, #869 & #1081.

LCRC #1855	LCRC #5543
NW cor. brick bldg.	NW cor. brick bldg.
KC Nail & tag 16" Maple	Nail & KC Remon. tag 16" Maple
KC Nail & tag P. Pole	Nail & KC Remon. tag P. Pole
KC Nail & tag 15" Elm	Nail & KC Remon. tag 15" Elm
	On C/L Grav. Rd. N.; on tree line S.
	C/L E-W Bit. Rd. is S. 3.5'

The selected location is accepted by me and is generally accepted by professional surveyors as the best available evidence of the position of the original corner.

C. Description of monument for corner and accessories established to perpetuate locating the position of the corner:

F-3 Standard Kent County Monument		
NW cor. brick bldg.	S30°E	86.28'
New Nail & KC Remon. tag NW side 16" Maple	S30°W	44.53'
Nail & KC Remon. tag SE side Pole	N25°E	55.72'
Nail & KC Remon. tag E. side 15" Elm	S05°E	48.04'
Set PK Nail & KC Remon. tag in curb joint	N45°W	42.31'
NE cor. brick bldg.	S50°E	115.56'
On C/L Grav. Rd. N.; on tree line S.		
C/L E-W Bit. Rd. is S. 3.5'		



Signed by *W. R. Byl* Date 11-17-94
Surveyor's Michigan License No. 23502