

**SURVEY & REMONUMENTATION**

KENT COUNTY REMONUMENTATION

APR 28 1995

STATE OF MICHIGAN  
COUNTY OF KENT  
RECEIVED FOR RECORD

**COMMISSION LAND CORNER RECORDATION CERTIFICATE**  
Filing Requirement of Act 74, Mich. P.A. 1970

94 NOV 28 AM 11:47

For corners in  
KENT COUNTY  
(County)

Located In: Corner Code #

1. Public Land Survey	T	7N	R	12W	F-5
	T		R		
	T		R		
	T		R		
2. Property Controlling in Section	S		T	R	
	S		T	R	
3. Miscellaneous Property in Sec.	S		T	R	
	S		T	R	

*Lucy J. Bond*  
REG. OF DEEDS

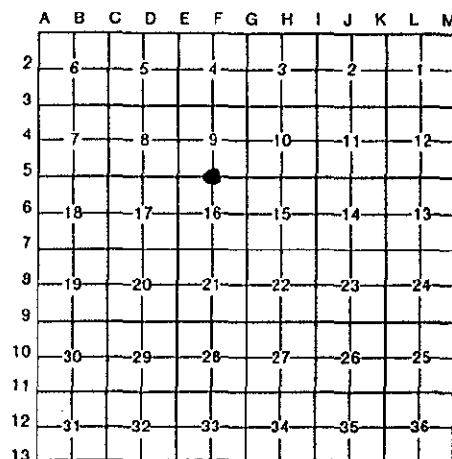
**7314**

Register of Deeds Stamp & File Number

4. Lot No. \_\_\_\_\_, Recorded Plat \_\_\_\_\_  
5. Private Claims \_\_\_\_\_

I, William R. Byl, in a field survey on July 5, 1994, do hereby certify that under requirements of P.A. 74, Michigan P.A. of 1970, the corner points mentioned in lines 1 and 2 above were in conformance with regulations and rules therefore as required in the current manual of survey instructions of the United States Department of the Interior, Bureau of Land Management or by a decree of a Court of Law and/or that the corner points mentioned in lines 3, 4 and 5 above were in conformance with the rules of the Michigan Board of Land Surveyors or by a Decree of a Court of Law; established, re-established, monumented, re-monumented, recovered, found as expressed below:

**NOTE: Not more than 4 corners, all in the same town and range, may be recorded on this certificate.**



A. Description of original monument and accessories and/or subsequent restoration:

F-5	1837	GLO	Whitcomb	Set Post
		Kent Co. Wit.		Iron
	1973	LCRC #522	Spicer	"T" Iron
	1982	LCRC #2963	Merdzinski	Set Kent County Monument
	1990	LCRC #5544	Starr	Kent County Monument

P.A. 345 1990 KENT COUNTY

PEER APPROVED 11/17/94  
CHAIRMAN *Harvey Tucker*

The position of this corner was previously approved by the Kent County Remonumentation Peer Group, monumented by John A. Merdzinski on 3/29/82 and was recorded per LCRC #2963

B. Description of corner evidence found and/or method applied in restoring or reestablishing corner:

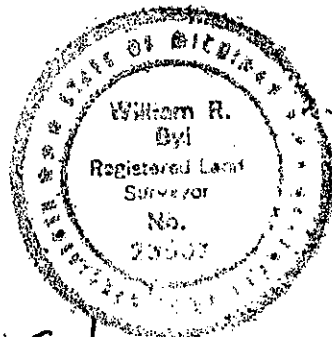
F-5 Found standard Kent Co. Mon. (Harrison) per witnesses from above LCRC as set by John A. Merdzinski in place of the "T" Iron he found. Said "T" Iron checks with Kent Co. Wit. and LCRC #522.

<u>LCRC #2963</u>		<u>LCRC #5544</u>	
SE cor. hse. fdn.	N45°W 129.50'	SE cor. hse. fdn.	N45°W 129.50'
C/L hydrant	N30°W 39.09'	Centerline hydrant	N30°W 39.09'
Nail & KC tag P., T., CTV Pole	N65°E 35.53'	Nail & KC tag P, T & CTV Pole	N65°E 35.53'
Nail & KC tag P. Pole	S25°E 71.40'	Nail & KC tag P. Pole	S25°E 71.40'
Nail & KC tag top C/L post	S25°W 37.17'	Nail & KC tag top C/L g. post	S25°W 37.42'
C/L Manhole	S15°E 17.55'	C/L Manhole	S15°E 17.55'
3/4" Iron Pipe 0.3' E. & 0.58' S.		3/4" Iron pipe 0.3' E. & 0.58' S.	
Corner on C/L Rd. N. & ext. C/L W.		Cor. on C/L Rd. N. & ext C/L Rd. W.	

The selected location is accepted by me and is generally accepted by professional surveyors as the best available evidence of the position of the original corner.

C. Description of monument for corner and accessories established to perpetuate locating the position of the corner:

F-5 Standard Kent County Monument	
SE cor. hse. fdn.	N45°W 129.50'
C/L hydrant	N30°W 39.09'
Nail & KC Remon. tag S. side P., T., CTV Pole	N65°E 35.53'
Nail & KC Remon. tag NE side P. Pole	S25°E 71.44'
Nail & KC Remon. tag top C/L guard post	S25°W 37.50'
C/L Manhole	S15°E 17.55'
3/4" Iron Pipe 0.3' E. & 0.58' S.	
Corner on C/L Rd. N. & ext. C/L W., 21' N. C/L "X"	



Signed by *W. R. Byl* Date 11-17-94  
Surveyor's Michigan License No. 23502