

SURVEY & REMONUMENTATION

KENT COUNTY REMONUMENTATION

APR 28 1995

LAND CORNER RECORDATION CERTIFICATE

COMMISSION

Filing Requirement of Act 74, Mich. P.A. 1970

STATE OF MICHIGAN
COUNTY OF KENT
RECEIVED FOR RECORD
94 NOV 28 AM 11:47

For corners in
KENT COUNTY

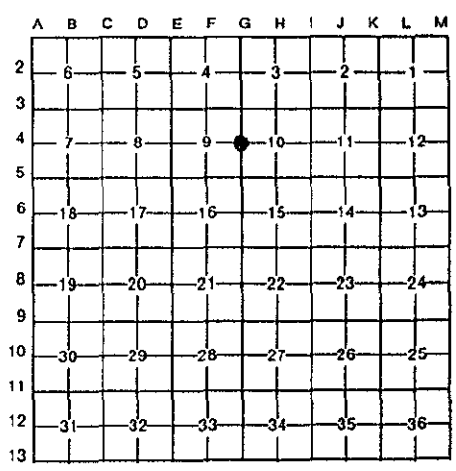
Located In: Corner Code #

1. Public Land Survey	T	7N	R	12W	G-4
	T		R		
	T		R		
	T		R		
2. Property Controlling in Section	S		T	R	
	S		T	R	
3. Miscellaneous Property in Sec.	S		T	R	
	S		T	R	

Lucy J. Bond
REG. OF DEEDS

7321
Register of Deeds Stamp & File Number

- 4. Lot No. _____, Recorded Plat _____
- 5. Private Claims _____



I, William R. Byl, in a field survey on May 3, 19 94, do hereby certify that under requirements of P.A. 74, Michigan P.A. of 1970, the corner points mentioned in lines 1 and 2 above were in conformance with regulations and rules therefore as required in the current manual of survey instructions of the United States Department of the Interior, Bureau of Land Management or by a decree of a Court of Law and/or that the corner points mentioned in lines 3, 4 and 5 above were in conformance with the rules of the Michigan Board of Land Surveyors or by a Decree of a Court of Law; established, re-established, monumented, re-monumented, recovered, found as expressed below:

NOTE: Not more than 4 corners, all in the same town and range, may be recorded on this certificate.

A. Description of original monument and accessories and/or subsequent restoration:

G-4	1837	GLO	Whitcomb	Set Post
	1960	Kent Co. Wit.	MDSH	3/4" Iron
	1974	LCRC #627	South	3/4" Iron
	1982	LCRC #2789	Merdzinski	Set Kent County Monument
	1990	LCRC #5551	Starr	Kent County Monument

P.A. 345 1920 KENT COUNTY
PEER APPROVED 11/17/94
CHAIRMAN *John A. Merdzinski*

The position of this corner was previously approved by the Kent County Remonumentation Peer Group, monumented by John A. Merdzinski on 3/24/82 and was recorded per LCRC #2789

B. Description of corner evidence found and/or method applied in restoring or reestablishing corner:

G-4 Found standard Kent Co. Mon. (Harrison) per witnesses from above LCRC as set by John A. Merdzinski in place of the 1/2" Iron Pipe he found. Said 1/2" Iron Pipe checks with Kent Co. Wit. & LCRC #627.

LCRC #2789			LCRC #5551		
KC tag & nail 40" Oak	North	3.05'	Nail & KC Remon. tag 42" Oak	North	5.05'
KC tag & nail 24" Ash	West	34.30'	Nail & KC Remon. tag 26" Ash	West	34.23'
KC tag & nail 14" W. Cherry	S25°W	43.34'	Nail & KC Remon. tag 14" W. Ch.	S25°W	43.30'
KC tag & nail 24" Oak	S25°E	66.85'	Nail & KC Remon. tag 26" Oak	S25°E	66.78'
KC tag & nail 24" Oak	S70°E	34.56'	Nail & KC Remon. tag 28" Oak	S70°E	34.55'
Cor. at remains of fences N-S-E-W			Found remains of fence N-W		

The selected location is accepted by me and is generally accepted by professional surveyors as the best available evidence of the position of the original corner.

C. Description of monument for corner and accessories established to perpetuate localing the position of the corner:

G-4 Standard Kent County Monument	
Nail & KC Remon. tag W. side 42" Oak	N00°W 5.05'
Nail & KC Remon. tag N. side 26" Ash	S90°W 34.23'
Nail & KC Remon. tag W. side 14" W. Cherry	S25°W 43.30'
New Nail & KC Remon. tag NE side 26" Oak	S25°E 66.78'
Nail & KC Remon. tag S. side 28" Oak	S70°E 34.55'
Found remains of fence N-W	



Signed by *W. R. Byl* Date 11-17-94
Surveyor's Michigan License No. 23502