

SURVEY & REMONUMENTATION

KENT COUNTY REMONUMENTATION

APR 28 1995

LAND CORNER RECORDATION CERTIFICATE
Filing Requirement of Act 74, Mich. P.A. 1970

STATE OF MICHIGAN
COUNTY OF KENT
RECEIVED FOR RECORD
94 DEC 27 AM 9:04

For corners in **COMMISSION**
KENT COUNTY

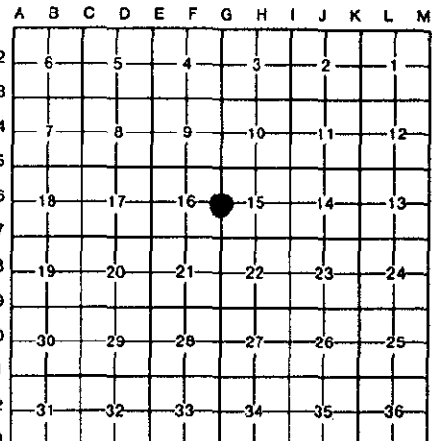
(County)	Located In:	Corner Code #
1. Public Land Survey	T <u>7N</u> R <u>12W</u>	G-6
	T _____ R _____	_____
	T _____ R _____	_____
	T _____ R _____	_____
2. Property Controlling in Section	S _____ T _____ R _____	_____
	S _____ T _____ R _____	_____
3. Miscellaneous Property in Sec.	S _____ T _____ R _____	_____
	S _____ T _____ R _____	_____

W. R. Byl
REG. OF DEEDS

7895

Register of Deeds Stamp & File Number

4. Lot No. _____, Recorded Plat _____
5. Private Claims _____



I, William R. Byl, in a field survey on June 30, 19 94, do hereby certify that under requirements of P.A. 74, Michigan P.A. of 1970, the corner points mentioned in lines 1 and 2 above were in conformance with regulations and rules therefore as required in the current manual of survey instructions of the United States Department of the Interior, Bureau of Land Management or by a decree of a Court of Law and/or that the corner points mentioned in lines 3, 4 and 5 above were in conformance with the rules of the Michigan Board of Land Surveyors or by a Decree of a Court of Law; established, re-established, monumented, re-monumented, recovered, found as expressed below:

NOTE: Not more than 4 corners, all in the same town and range, may be recorded on this certificate.

A. Description of original monument and accessories and/or subsequent restoration:

G-6	1837	GLO	Whitcomb	Set Post
	1965	Kent Co. Wit.	Williams & Works	On MH cover
	1973	LCRC #468	Spicer	MH Cover
	1982	LCRC #2791	Merdzinski	Unmarked Point on MH cover
	1990	LCRC #5553	Starr	Ref. PK Nails for Point on MH

P.A. 345 1990 KENT COUNTY
PEER APPROVED 12/22/94
CHAIRMAN *James Huber*

The position of this corner was previously approved by the Kent County Remonumentation Peer Group, monumented by John A. Merdzinski on 3/19/82 and was recorded per LCRC #2791 NO KENT COUNTY MONUMENT SET - POINT ON MANHOLE COVER.

B. Description of corner evidence found and/or method applied in restoring or reestablishing corner:

G-6 Found Manhole cover and established point per witnesses from above LCRC as set by John A. Merdzinski on the Manhole Cover he found. Said Point on Manhole cover checks with Kent Co. Wit. and LCRC #468.

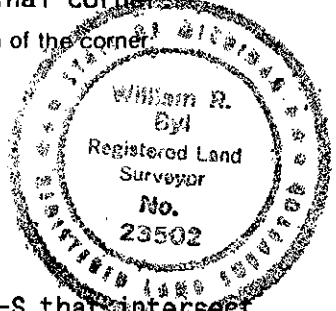
LCRC #2791		LCRC #5553
Nail & tag P & T Pole	S25°W 58.05'	Nail & tag SE side P & T Pole
Nail & tag MBT Pole	N45°W 39.18'	Nail & tag NE side MBT Pole
Top C/L hydrant	S70°E 58.52'	Top C/L Hydrant
NW face conc. base MBT box	N40°E 43.35'	Face of fence post
Face of fence post	N85°W 34.80'	Nail & tag W. side Tel. Pole
C/L MH is 0.25' S. & 0.6' W.		C/L MH is 0.25 S. & 0.6' W.

The selected location is accepted by me and is generally accepted by professional surveyors as the best available evidence of the position of the original corner.

C. Description of monument for corner and accessories established to perpetuate locating the position of the corner:

G-6 Unmarked Point on Manhole Cover

Nail & Remon. tag SE side P & T Pole	S25°W 58.08'
Nail & Remon. tag NE side MBT Pole	N45°W 39.19'
Top C/L Hydrant	S70°E 58.58'
Face of fence post	N85°W 34.85'
Nail & Remon. tag W. side Tel. Pole	N50°E 39.55'
C/L MH is 0.4' S. & 0.7' W.	



W. R. Byl

Signed by _____ Date 12/07/94
Surveyor's Michigan License No. 23502