

SURVEY & REMONUMENTATION

APR 28 1995

KENT COUNTY REMONUMENTATION

LAND CORNER RECORDATION CERTIFICATE

Filing Requirement of Act 74, Mich. P.A. 1970

STATE OF MICHIGAN
COUNTY OF KENT
RECEIVED FOR RECORD

94 NOV 28 AM 11:48

COMMISSION

For corners in
KENT COUNTY

(County)

Located In:

Corner Code =#

1. Public Land Survey	T	<u>7N</u>	R	<u>12W</u>	<u>G-10</u>
	T	_____	R	_____	_____
	T	_____	R	_____	_____
	T	_____	R	_____	_____
2. Property Controlling in Section	S	_____	T	_____	_____
	S	_____	T	_____	_____
3. Miscellaneous Property in Sec.	S	_____	T	_____	_____
	S	_____	T	_____	_____

Lee J. Bond
REG. OF DEEDS

7326

Register of Deeds Stamp & File Number

4. Lot No. _____, Recorded Plat _____
5. Private Claims _____

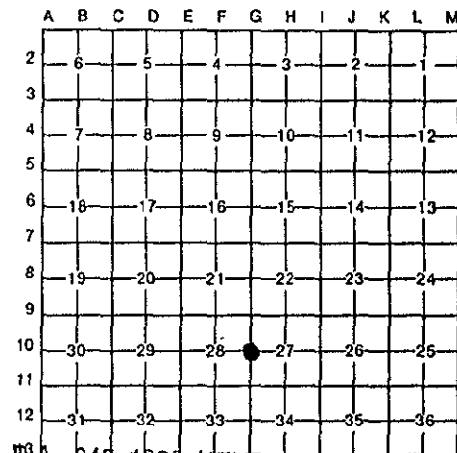
I, William R. Byl, in a field survey on Sept. 2, 1994, do hereby certify that under requirements of P.A. 74, Michigan P.A. of 1970, the corner points mentioned in lines 1 and 2 above were in conformance with regulations and rules therefore as required in the current manual of survey instructions of the United States Department of the Interior, Bureau of Land Management or by a decree of a Court of Law and/or that the corner points mentioned in lines 3, 4 and 5 above were in conformance with the rules of the Michigan Board of Land Surveyors or by a Decree of a Court of Law; established, re-established, monumented, re-monumented, recovered, found as expressed below:

NOTE: Not more than 4 corners, all in the same town and range, may be recorded on this certificate.

A. Description of original monument and accessories and/or subsequent restoration:

G-10	1837	GLO	Whitcomb	Set Post
		Kent Co. Wit.		No desc. of corner-witnesses given
	1975	LCRC #841	Chambers	3/4" Iron
	1982	LCRC #2795	Mardzinski	Set Kent County Monument
	1990	LCRC #5557	Starr	Kent County Monument

The position of this corner was previously approved by the Kent County Remonumentation Peer Group, monumented by John A. Merdzinski on 3/23/82 and was recorded per LCRC #2795



P.A. 345 1990 KENT COUNTY

PEER APPROVED 11/17/94
CHAIRMAN *John A. Merdzinski*

B. Description of corner evidence found and/or method applied in restoring or reestablishing corner:

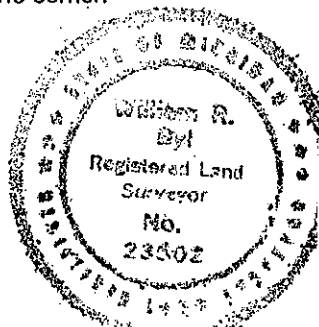
G-10 Found standard Kent Co. Mon. (Harrison) per witnesses from above LCRC as set by John A. Merdzinski in place of the Conc. Monument (with 3/4" pipe) he found. Said Conc. Monument checks with Kent Co. Wit. & LCRC #841.

LCRC #2795			LCRC #5557		
Nail & tag 10" Elm	S65°E	23.03'	Nail & KC Remon. tag 10" Elm	S65°E	22.90'
Nail & tag 10" Oak	N40°E	48.47'	Nail & KC Remon. tag 10" Oak	N40°E	48.44'
Nail & tag 10" Maple	N20°W	37.08'	Nail & KC Remon. tag 10" Maple	N20°W	36.99'
Nail & tag 14" Maple	N40°W	43.07'	Nail & KC Remon. tag 14" Maple	N40°W	43.05'
Nail & tag 12" Elm	S55°W	12.61'	Nail & KC Remon. tag 12" Elm	S55°W	12.69'
Nail & tag 18" Poplar North		6.30'	Remains of fence E-W is 10' m/l South		
Remains of fc. E-W is 10' m/l S.					

The selected location is accepted by me and is generally accepted by professional surveyors as the best available evidence of the position of the original corner.

C. Description of monument for corner and accessories established to perpetuate locating the position of the corner:

G-10 Standard Kent County Monument					
Nail & KC Remon. tag S. side Dead 10" Elm	S65°E	22.90'			
New Nail & KC Remon. tag NW side 12" Oak	N40°E	48.44'			
New Nail & KC Remon. tag NE side 12" Maple	N20°W	37.05'			
New Nail & KC Remon. tag SW side 18" Maple	N40°W	43.13'			
Nail & KC Remon. tag N. side Dead 12" Elm	S55°W	12.69'			
Set Nail & KC Remon. tag S. side 10" Maple	S85°W	35.33'			
E. face of Gas Line Sign Post	N80°W	112.9'			
Remains of fence E-W is 10' m/l South					



Signed by *William R. Byl* Date 11-17-94

Surveyor's Michigan License No. 23502