

SURVEY & REMONUMENTATION

KENT COUNTY REMONUMENTATION

APR 28 1995

LAND CORNER RECORDATION CERTIFICATE

COMMISSION

Filing Requirement of Act 74, Mich. P.A. 1970

STATE OF MICHIGAN
COUNTY OF KENT
RECEIVED FOR RECORD

94 NOV 28 AM 11:48

For corners in
KENT COUNTY
(County)

Located In: Corner Code #

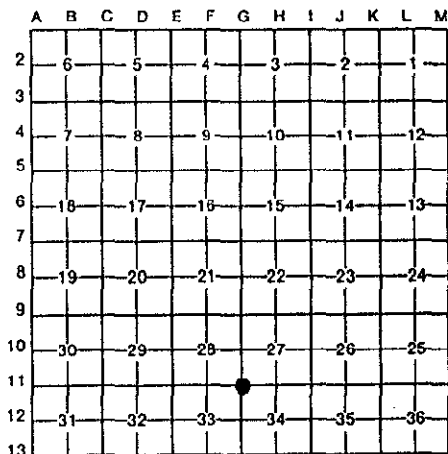
1. Public Land Survey	T <u>7N</u> R <u>12W</u>	<u>G-11</u>
	T ___ R ___	_____
	T ___ R ___	_____
	T ___ R ___	_____
2. Property Controlling in Section	S ___ T ___ R ___	_____
	S ___ T ___ R ___	_____
3. Miscellaneous Property in Sec.	S ___ T ___ R ___	_____
	S ___ T ___ R ___	_____

Eric J. Bond
REG. OF DEEDS

7327

Register of Deeds Stamp & File Number

4. Lot No. _____, Recorded Plat _____
5. Private Claims _____



I, William R. Byl, in a field survey on June 30, 19 94, do hereby certify that under requirements of P.A. 74, Michigan P.A. of 1970, the corner points mentioned in lines 1 and 2 above were in conformance with regulations and rules therefore as required in the current manual of survey instructions of the United States Department of the Interior, Bureau of Land Management or by a decree of a Court of Law and/or that the corner points mentioned in lines 3, 4 and 5 above were in conformance with the rules of the Michigan Board of Land Surveyors or by a Decree of a Court of Law; established, re-established, monumented, re-monumented, recovered, found as expressed below:

NOTE: Not more than 4 corners, all in the same town and range, may be recorded on this certificate.

A. Description of original monument and accessories and/or subsequent restoration:

G-11	1837	GLO	Whitcomb	Set Post
	1935	Kent Co. Wit.		Concrete Monument
	1972	LCRC #283	VanKooten	Iron
	1983	LCRC #3317	Tobin	Set Kent County Monument
	1990	LCRC #5558	Starr	Kent County Monument

P.A. 345 1990 KENT COUNTY

PEER APPROVED 11/17/94
CHAIRMAN *[Signature]*

The position of this corner was previously approved by the Kent County Remonumentation Peer Group, monumented by Douglas J. Tobin on 5/22/82 and was recorded per LCRC #3317

B. Description of corner evidence found and/or method applied in restoring or reestablishing corner:

G-11 Found standard Kent Co. Mon. (Harrison) per witnesses from above LCRC as set by Douglas J. Tobin in place of the 1" Pipe he found over a Concrete Monument (36" Deep). Said 1" Pipe & Concrete Monument checks with Kent Co. Wit. & LCRC #283.

LCRC #3317	LCRC #5558
KC tag & nail 12" Spruce S25°W 68.18'	Nail & KC Remon. tag 12" Spruce S25°W 68.18'
KC tag & nail 20" Cherry South 23.18'	Nail & KC Remon. tag 20" Cherry South 23.51'
KC tag & nail 14" Oak S60°E 77.32'	Nail & KC Remon. tag 14" Oak S60°E 77.71'
NW cor. 2.3'x 2.3' top of conc. drive pillar N45°E 74.02'	NW cor. 2.3'x 2.3' top of conc. drive pillar N45°E 74.89'
	Nail & KC Remon. tag P. Pole N15°E 50.62'
	Nail & KC Remon. tag Guy Pole S50°W 31.31'
	C/L E-W Bit. Rd. is 1.5' S.; On tree row S.

The selected location is accepted by me and is generally accepted by professional surveyors as the best available evidence of the position of the original corner.

C. Description of monument for corner and accessories established to perpetuate locating the position of the corner:

G-11 Standard Kent County Monument			
New Nail & KC Remon. tag W. side 16" Spruce	S25°W	68.30'	
Nail & KC Remon. tag S. side 18" Oak	S60°E	77.78'	
NW cor. 2.3'x 2.3' top of conc. drive pillar	N45°E	74.89'	
Nail & KC Remon. tag W. side P. Pole	N15°E	50.69'	
Nail & KC Remon. tag NW side Guy Pole	S50°W	31.31'	
C/L E-W Bit. Rd. is 1.5' S.; On tree row S.			



Signed by *W. R. Byl* Date 11-17-94
Surveyor's Michigan License No. 23502
FORM APPROVED BY MICHIGAN STATE BOARD OF LAND SURVEYORS, JAN. 28, 1971
REVISED MAY 14, 1975
REVISED JAN., 1983