

**SURVEY & REMONUMENTATION**

KENT COUNTY REMONUMENTATION

STATE OF MICHIGAN  
COUNTY OF KENT  
RECEIVED FOR RECORD

APR 28 1995

**LAND CORNER RECORDATION CERTIFICATE**  
Filing Requirement of Act 74, Mich. P.A. 1970

94 NOV 28 AM 11:49

For corners in **COMMISSION**  
KENT COUNTY  
(County)

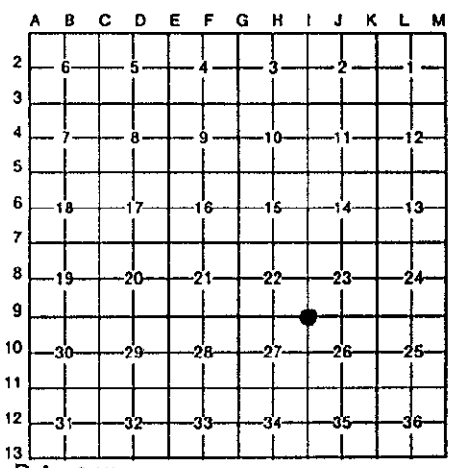
Located In: Corner Code =#

- |                                       |                          |       |
|---------------------------------------|--------------------------|-------|
| 1. Public Land Survey                 | T <u>7N</u> R <u>12W</u> | I-9   |
|                                       | T _____ R _____          | _____ |
|                                       | T _____ R _____          | _____ |
|                                       | T _____ R _____          | _____ |
| 2. Property Controlling in Section    | S _____ T _____ R _____  | _____ |
|                                       | S _____ T _____ R _____  | _____ |
| 3. Miscellaneous Property in Sec.     | S _____ T _____ R _____  | _____ |
|                                       | S _____ T _____ R _____  | _____ |
| 4. Lot No. _____, Recorded Plat _____ |                          |       |
| 5. Private Claims _____               |                          |       |

*W. J. Bond*  
REG. OF DEEDS

**7343**

Register of Deeds Stamp & File Number



I, William R. Byl, in a field survey on April 22, 19 93, do hereby certify that under requirements of P.A. 74, Michigan P.A. of 1970, the corner points mentioned in lines 1 and 2 above were in conformance with regulations and rules therefore as required in the current manual of survey instructions of the United States Department of the Interior, Bureau of Land Management or by a decree of a Court of Law and/or that the corner points mentioned in lines 3, 4 and 5 above were in conformance with the rules of the Michigan Board of Land Surveyors or by a Decree of a Court of Law; established, re-established, monumented, re-monumented, recovered, found as expressed below:

**NOTE: Not more than 4 corners, all in the same town and range, may be recorded on this certificate.**

A. Description of original monument and accessories and/or subsequent restoration:

I-9	1837	GLO	Whitcomb	Set Post
		Kent Co. Wit.		Cut on manhole rim
	1974	LCRC #775	Nederveld	"X on manhole (cuts on rim of MH)
	1982	LCRC #2800	Merdzinski	Unmarked point on manhole cover at intersection of cuts on rim.

P.A. 345 1990 KENT COUNTY  
PEER APPROVED 11/17/94  
CHAIRMAN *Harry Huber*

The position of this corner was previously approved by the Kent County Remonumentation Peer Group, monumented (point on MH cover, no Kent Co. Mon. set) by John A. Merdzinski on 3/19/82 and was recorded per LCRC #2800

B. Description of corner evidence found and/or method applied in restoring or reestablishing corner:

I-9 FOUND MANHOLE WITHOUT ANY CUT MARKS ON RIM OR COVER. Reset location of corner from witnesses per above LCRC #2800 as used by John A. Merdzinski. Said point on manhole checks with Kent Co. Wit. & LCRC #775.

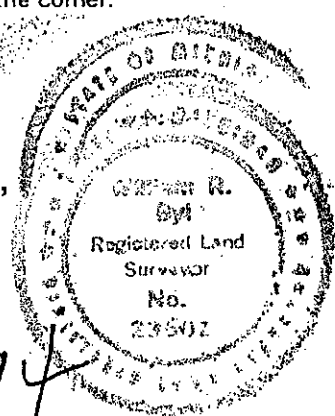
LCRC #2800

Nail & K.C. Remon. tag in NE side guy pole	S30°E	37.72'
Nail & K.C. Remon. tag in W. side light pole	N35°E	77.72'
SE corner brick (#1605) house	N40°W	96.87'
SE corner brick fireplace	S50°W	93.84'
Center line of hydrant	N75°E	50.38'
Center line "X" of manhole is 0.60' East and 0.15' North of corner		

The selected location is accepted by me and is generally accepted by professional surveyors as the best available evidence of the position of the original corner.

C. Description of monument for corner and accessories established to perpetuate locating the position of the corner:

I-9 Chiseled "X" on manhole cover and new marks in rim of manhole		
Nail & K.C. Remon. tag in NE side guy pole	S30°E	37.72'
Nail & K.C. Remon. tag in W. side light pole	N35°E	77.72'
SE corner brick (#1605) house	N40°W	96.87'
SE corner brick fireplace	S50°W	93.76'
Center line of hydrant	N65°E	52.70'
Center line "X" of manhole is 0.60' East and 0.15' South of corner		



Signed by *W. R. Byl*  
Surveyor's Michigan License No. 23502

Date 11-17-94