

SURVEY & REMONUMENTATION

APR 28 1995

COMMISSION

KENT COUNTY REMONUMENTATION

LAND CORNER RECORDATION CERTIFICATE
Filing Requirement of Act 74, Mich. P.A. 1970

STATE OF MICHIGAN
COUNTY OF KENT
RECEIVED FOR RECORD

94 NOV 28 AM 11:50

For corners in
KENT COUNTY

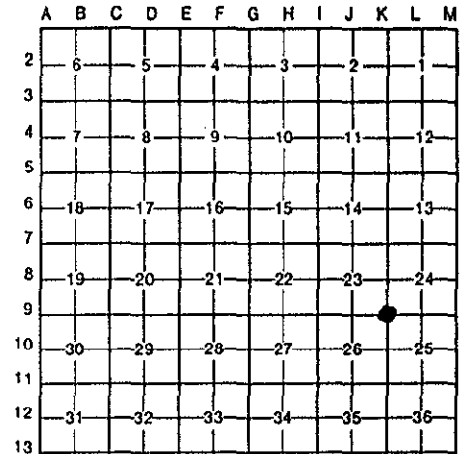
(County)	Located In:	Corner Code =#
1. Public Land Survey	T <u>7N</u> R <u>12W</u>	<u>K-9</u>
	T _____ R _____	_____
	T _____ R _____	_____
	T _____ R _____	_____
2. Property Controlling in Section	S _____ T _____ R _____	_____
	S _____ T _____ R _____	_____
3. Miscellaneous Property in Sec.	S _____ T _____ R _____	_____
	S _____ T _____ R _____	_____

Lee J. Bond
REG. OF DEEDS

7363

Register of Deeds Stamp & File Number

4. Lot No. _____, Recorded Plat _____
5. Private Claims _____



I, William R. Byl, in a field survey on March 4, 19 94, do hereby certify that under requirements of P.A. 74, Michigan P.A. of 1970, the corner points mentioned in lines 1 and 2 above were in conformance with regulations and rules therefore as required in the current manual of survey instructions of the United States Department of the Interior, Bureau of Land Management or by a decree of a Court of Law and/or that the corner points mentioned in lines 3, 4 and 5 above were in conformance with the rules of the Michigan Board of Land Surveyors or by a Decree of a Court of Law; established, re-established, monumented, re-monumented, recovered, found as expressed below:

NOTE: Not more than 4 corners, all in the same town and range, may be recorded on this certificate.

A. Description of original monument and accessories and/or subsequent restoration:

K-9	1837	GLO	Whitcomb	Set Post
		Kent Co. Wit.		"Cut"
	1930	City of Grand Rapids		City Iron
	1937	Williams & Works		City Iron
	1983	LCRC #3512	Byl	City Iron

The position of this corner was previously approved by the Kent County Remonumentation Peer Group, monumented by William R. Byl on 7/27/83 and was recorded per LCRC #3512 (City Iron was left in place)

B. Description of corner evidence found and/or method applied in restoring or reestablishing corner:

K-9 Found standard Kent Co. Mon. (Harrison) in mon. box (set after 1993 road const). Said Kent Co. Mon. fits the witnesses as recorded by William Byl and checks with City of Grand Rapids records.

LCRC #3512

C/L top of hydrant	N15°W	24.89'
SE cor. brick bldg. #761 (3' above grd.)	N30°E	83.93'
SW cor. brick bldg. #761 (3' above grd.)	N25°W	82.90'
NE cor. brick bldg. #806	S75°W	73.81'
NW cor. church bldg. (1' above grd.)	S25°E	65.65'

P.A. 345 1990 KENT COUNTY

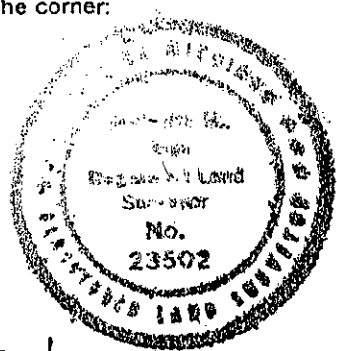
PEER APPROVED 11/17/94

CHAIRMAN *Harry Huber*

The selected location is accepted by me and is generally accepted by professional surveyors as the best available evidence of the position of the original corner.

C. Description of monument for corner and accessories established to perpetuate locating the position of the corner:

K-9 Standard Kent County Monument in mon. box		
C/L top of hydrant (new)	N20°W	26.00'
SE cor. brick bldg. #761 (3' above grd.)	N30°E	83.93'
SW cor. brick bldg. #761 (3' above grd.)	N25°W	82.77'
NE cor. brick bldg. #806	S75°W	73.81'
SE cor. bldg. #800-802	S30°W	57.66'
NW cor. hse. fdn. #752	S55°E	90.90'



Signed by *W. R. Byl*
Surveyor's Michigan License No. 23502

Date 11-17-94