

SURVEY & REMONUMENTATION

\$7.00
\$2.00

MAR 03 1998

SECTION

LAND CORNER RECORDATION CERTIFICATE
Filing Requirement of Act 74, Mich. P.A. 1970
KENT COUNTY REMONUMENTATION

For corners in

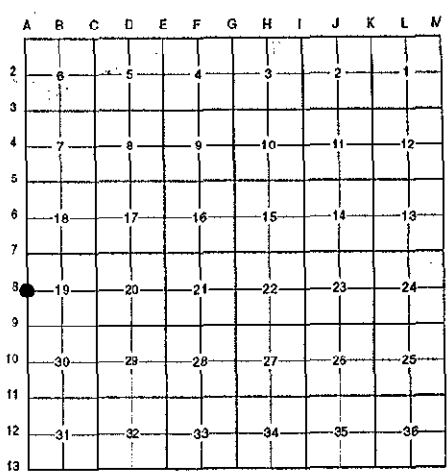
<u>Kent</u> (County)	Located in: Grattan Township	Corner Code #
1. Public Land Survey	T <u>8N</u> R <u>9W</u>	<u>A-8</u>
	T _____ R _____	_____
	T _____ R _____	_____
	T _____ R _____	_____
2. Property Controlling in Section	S _____ T _____ R _____	_____
	S _____ T _____ R _____	_____
3. Miscellaneous Property in Sec.	S _____ T _____ R _____	_____
	S _____ T _____ R _____	_____
4. Lot No. _____, Recorded Plat _____		
5. Private Claims _____		

REG. OF DEEDS
Luci J. Bond
97 NOV 14 AM 9:00
STATE OF MICHIGAN
COUNTY OF KENT
RECEIVED FOR RECORD

10302

Register of Deeds Stamp & File Number

I, Randy Kolehouse, in a field survey on July 1 19 97, do hereby certify that under requirements of P.A. 74 Michigan P.A. of 1970, the corner points mentioned in lines 1 and 2 above were in conformance with regulations and rules therefore as required in the current manual of survey instructions of the United States Department of the Interior, Bureau of Land Management or by a decree of a Court of Law and/or that the corner points mentioned in lines 3, 4 and 5 above were in conformance with the rules of the Michigan Board of Land Surveyors or by a Decree of a Court of Law; established, re-established, monumented, re-monumented, recovered, found as expressed below:



NOTE: Not more than 4 corners, all in the same town and range, may be recorded on this certificate.

A. Description of original monument and accessories and/or subsequent restoration:

A-8	1831	G.L.O. Notes	Mullett	Set Post
	1941	Witness Map	K.C. Surveyor	3/4" Iron Pipe
	1978	L.C.R.C. #1151	Williams & Works	1" Iron (M-8, T8N, R10W)
	1981	L.C.R.C. #1903	Jonker Land Survey	Fnd. 1" Iron / Set K.C. Monument (M-8, T8N, R10W)
	1989	L.C.R.C. #5293	J. Bueche	K.C. Monument (M-8, T8N, R10W)

Note: This corner is common with M-8, T8N, R10W.

This corner was originally approved by the Kent County Remonumentation Peer Group and monumented by Rob Jonker on 7/16/81 and was recorded per L.C.R.C. #1903.

B. Description of corner evidence found and/or method applied in restoring or reestablishing corner:

A-8 Found a Standard Kent County Monument 3' East and 3' North of the C/L intersection of Tiffany Avenue (gravel) running North and South and Krueter Road (bit.) running West per L.C.R.C.'s #1903 and #5293 as set by Rob Jonker in place of a 1" iron he found which checked L.C.R.C. #1151 and the K.C. Surveyor's records.

L.C.R.C. #1903

L.C.R.C. #5293

Remon. tag on E side 15" Maple S 35° W 77.77'
Remon. tag on S side 9" Cedar S 49° E 36.92'

Remon. tag & nail on N side 12" Oak S 75° W 92.70'
Remon. tag & nail on E side 20" Maple S 35° W 78.02'
Remon. tag & nail on S side 12" Cedar S 40° E 36.77'
Remon. tag & nail on W side 10" Oak N 20° E 50.43'

The selected location is accepted by me and is generally accepted by professional surveyors as the best available evidence of the position of the original corner.

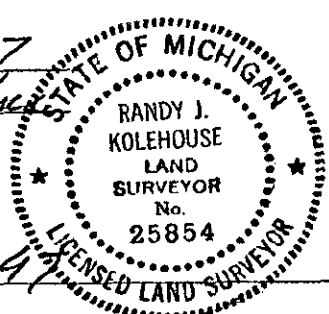
C. Description of monument for corner and accessories established to perpetuate locating the position of the corner:

A-8 Standard Kent County Monument
Nail & K.C. remon. tag on N side 12" Oak S 75° W 92.70'
Nail & K.C. remon. tag on E side 20" Maple S 35° W 78.02'
Nail & K.C. remon. tag on S side 12" Cedar S 49° E 36.77'
Nail & K.C. remon. tag on W side 10" Oak N 20° E 50.43'

P.A. 345 1990 KENT COUNTY

PEER APPROVED 8/28/97

CHAIRMAN [Signature]



Signed by Randy J. Kolehouse
EARTH TECH

Date 9/23/97

Surveyor's Michigan License No. 25854