

12

KENT COUNTY REMONUMENTATION

STATE OF MICHIGAN  
COUNTY OF KENT  
RECEIVED FOR RECORD

LAND CORNER RECORDATION CERTIFICATE  
Filing Requirement of Act 74, Mich. P.A. 1970

93 MAR -9 PM 1:56

For corners in

KENT  
(County)

Located In: Grattan Twp.  
Corner Code #

- 1. Public Land Survey T 8 - N R 9 - W A-12  
Grattan Township  
T      R       
T      R       
T      R
- 2. Property Controlling in Section S      T      R       
S      T      R
- 3. Miscellaneous Property in Sec. S      T      R       
S      T      R

*Levi J. Bond*  
REG. OF DEEDS

6736

Register of Deeds Stamp & File Number

- 4. Lot No. \_\_\_\_\_, Recorded Plat \_\_\_\_\_
- 5. Private Claims \_\_\_\_\_

	A	B	C	D	E	F	G	H	I	J	K	L	M
2	6	5	4	3	2	1							
3													
4	7	8	9	10	11	12							
5													
6	13	17	16	15	14	13							
7													
8	19	20	21	22	23	24							
9													
10	30	29	28	27	26	25							
11													
12	31	32	33	34	35	36							
13													

I, Thomas C. Starr, in a field survey on March 3, 19 93, do hereby certify that under requirements of P.A. 74, Michigan P.A. of 1970, the corner points mentioned in lines 1 and 2 above were in conformance with regulations and rules therefore as required in the current manual of survey instructions of the United States Department of the Interior, Bureau of Land Management or by a decree of a Court of Law and/or that the corner points mentioned in lines 3, 4 and 5 above were in conformance with the rules of the Michigan Board of Land Surveyors or by a Decree of a Court of Law; established, re-established, monumented, re-monumented, recovered, found as expressed below:

**NOTE: Not more than 4 corners, all in the same town and range, may be recorded on this certificate.**

A. Description of original monument and accessories and/or subsequent restoration:

A-12 West 1/4 corner of Section 31  
Corner is in Patigan Lake

B. Description of corner evidence found and/or method applied in restoring or reestablishing corner:

See PA-132 Survey Recorded in Liber R52, Page 40  
For Section Survey.  
Set witness monument on East and West 1/4 line  
1630' West of center of Section 31  
and 892.82' East of West 1/4 corner.



C. Description of monument for corner and accessories established to perpetuate locating the position of the corner:

Set Standard Kent County Monument with wit. cap.

WITNESSES

- Nail and K.C. Remon Tag in W. side 18" Maple N - 50 - E = 6.44'
- Nail and K.C. Remon Tag in S. side Twin 20" Maple N - 65 - W = 15.85'
- Nail and K.C. Remon Tag in E. side 50" Maple N - 15 - W = 53.35'
- Nail and K.C. Remon Tag in W. side 22" Maple S - 15 - E = 99.50'
- Nail and K.C. Remon Tag in S. side 24" Maple N - 80 - E = 27.90'

S.W. corner wood shed S - 60 - E 22.85'  
17' West to edge of Lake in fence line - East and West

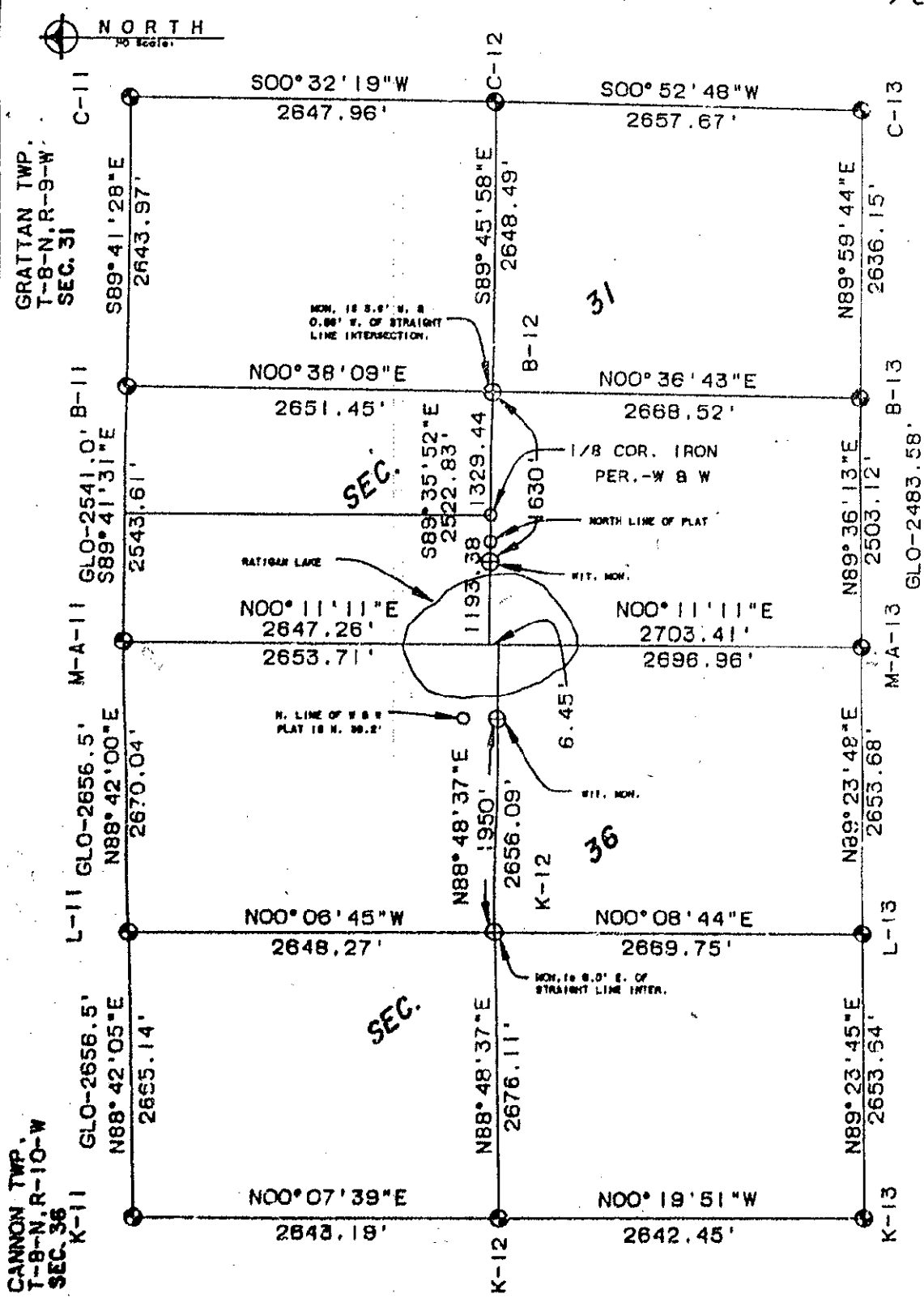
Signed by Thomas C. Starr

Date March 9, 1993

Surveyor's Michigan License No. 25874

Project No. 92037  
 Date: 3-8-93  
 For: KENT CO. REMON

State of Michigan,  
 Kent County Register of Deeds  
 This survey was received for record  
 on the 9th day of March, 1993, at 2:00 P.M.  
 Recorded in Liber 252 of surveys Page 4/3



NOTE: ALL BEARINGS BASED ON SOLAR OBSERVATION

I HEREBY CERTIFY THAT THIS SURVEY MEETS ALL OF THE REQUIREMENTS OF P.A. 132-1978.

**LEGEND**

- IRON STAKE (FOUND)
- ⊕ MONUMENT (SET)
- ⊙ MONUMENT
- WOOD STAKE
- - - FENCE LINE
- R RECORDED DIMENSION
- D DEED DIMENSION
- M MEASURED DIMENSION
- C CENTER LINE

**OTM**  
 O'Neil & Thomas, Inc.  
 Civil Engineers & Surveyors  
 1550 East Battline, S.E.  
 Grand Rapids, MI 49508  
 616-957-4800

STATE OF MICHIGAN  
 THOMAS STARR  
 LAND SURVEYOR  
 No. 25874  
 REGISTERED LAND SURVEYOR

*Thomas C. Starr*  
**THOMAS C. STARR**  
 Registered Land Surveyor  
 No. 25874