

\$7.00  
\$2.00

MAR 08 1999

**LAND CORNER RECORDATION CERTIFICATE**  
**Filing Requirement of Act 74, Mich. P.A. 1970**  
 KENT COUNTY REMONUMENTATION

For corners in SECTION \_\_\_\_\_

Kent (County)	Located in:	Grattan Township	Corner Code #
1. Public Land Survey	T <u>8N</u>	R <u>9W</u>	<u>C-2</u>
	T _____	R _____	_____
	T _____	R _____	_____
	T _____	R _____	_____
2. Property Controlling in Section	S _____	T _____	R _____
	S _____	T _____	R _____
3. Miscellaneous Property in Sec.	S _____	T _____	R _____
	S _____	T _____	R _____

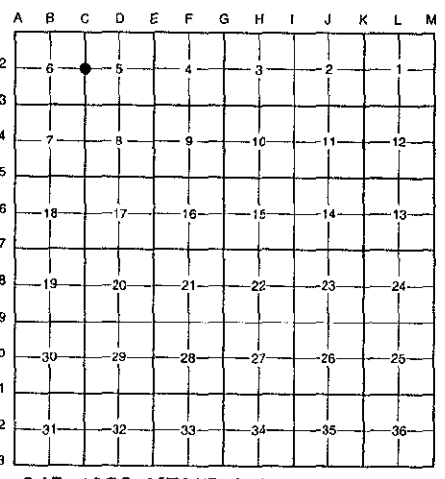
4. Lot No. \_\_\_\_\_, Recorded Plat \_\_\_\_\_

5. Private Claims \_\_\_\_\_

STATE OF MICHIGAN  
 COUNTY OF KENT  
 RECEIVED FOR RECORD  
 30 OCT 23 AM 9:59  
 REG. OF DEEDS  
*Luc St. Grand*

**10330**  
 Register of Deeds Stamp & File Number

I, Randy Kolehouse, in a field survey on Feb 4 19 98, do hereby certify that under requirements of P.A. 74 Michigan P.A. of 1970, the corner points mentioned in lines 1 and 2 above were in conformance with regulations and rules therefore as required in the current manual of survey instructions of the United States Department of the interior, Bureau of Land Management or by a decree of a Court of Law and/or that the corner points mentioned in lines 3, 4 and 5 above were in conformance with the rules of the Michigan Board of Land Surveyors or by a Decree of a Court of Law; established, re-established, monumented, re-monumented, recovered, found as expressed below:



**NOTE: Not more than 4 corners, all in the same town and range, may be recorded on this certificate.**

A. Description of original monument and accessories and/or subsequent restoration:

<b>C-2</b>	1837	G.L.O. Notes	Cathcart	Set Post
	N/A	Witness Map	K.C. Surveyor	1-1/2" Iron
	1978	L.C.R.C. #1120	Williams & Works	1-1/2" Crimped Iron
	1981	L.C.R.C. #1867	Jonker Land Survey	Fnd. 1-1/2" Crimped Iron /
	1994	L.C.R.C. #7984	Glaza & Associates	K.C. Monument

**P.A. 345 1990 KENT COUNTY**  
**PEER APPROVED 6/25/98**  
 CHAIRMAN *[Signature]*  
 Set K.C. Monument

This corner was originally approved by the Kent County Remonumentation Peer Group and monumented by Rob Jonker on 5/29/81 and was recorded per L.C.R.C. #1867.

B. Description of corner evidence found and/or method applied in restoring or reestablishing corner:

**C-2** Found a Standard Kent County Monument on the C/L of Nugent Road (gravel) running North and South, on line of a tree row running West, and 10' North of the C/L of a 2-track running West per L.C.R.C.'s #1867 and #7984 as set by Rob Jonker in place of a 1-1/2" crimped iron he found which checked L.C.R.C. #1120 and the K.C. Surveyor's records.

L.C.R.C. #1867

L.C.R.C. #7984

Remon. tag on E. side 30" walnut S20°W 51.93'  
 Remon. tag on W. side p.pole S35°E 184.62'

K.C. remon tag & nail in E side 36" Walnut S20°W 51.86' (m. 51.88')  
 K.C. remon tag & nail in W side P. pole S35°E 184.48' (m. 184.53')  
 K.C. remon tag & nail in N side 8" Walnut N73°W 40.53' (m. 40.55')  
 K.C. remon tag & nail in NW side P. pole N57°E 173.62' (m. 173.68')  
 In C/L of N-S gravel road

The selected location is accepted by me and is generally accepted by professional surveyors as the best available evidence of the position of the original corner.

- Description of monument for corner and accessories established to perpetuate locating the position of the corner:

-2 Standard Kent County Monument

- Nail & K.C. remon. tag on E side 36" Walnut S 20° W 51.88'
- Nail & K.C. remon. tag on W side P. pole S 35° E 184.53'
- Nail & K.C. remon. tag on N side 8" Walnut N 73° W 40.55'
- Nail & K.C. remon. tag on NW side P. pole N 57° E 173.68'
- On C/L of gravel road running N-S
- On tree row running W
- Two track running W, South 10'

signed by *Randy J. Kolehouse* Date 9-1-98

Surveyor's Michigan License No. 25854

