

\$7.00
\$2.00

MAR 08 1999

LAND CORNER RECORDATION CERTIFICATE
Filing Requirement of Act 74, Mich. P.A. 1970
KENT COUNTY REMONUMENTATION

For corners in

SECTION

Kent (County)	Located in:	Grattan Township	Corner Code #
1. Public Land Survey	T <u>8N</u>	R <u>9W</u>	<u>E-4</u>
	T _____	R _____	_____
	T _____	R _____	_____
	T _____	R _____	_____
2. Property Controlling in Section	S _____	T _____	R _____
	S _____	T _____	R _____
3. Miscellaneous Property in Sec.	S _____	T _____	R _____
	S _____	T _____	R _____

REG. OF DEEDS

Luci Stord

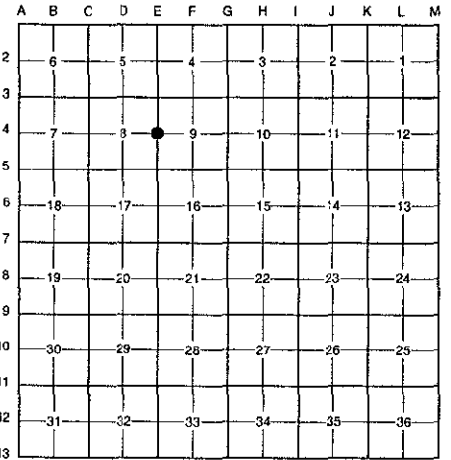
38 OCT 23 AM 9:59

STATE OF MICHIGAN
COUNTY OF KENT
RECEIVED FOR RECORD

10853

Register of Deeds Stamp & File Number

- 4. Lot No. _____, Recorded Plat _____
- 5. Private Claims _____



I, Randy Kolehouse, in a field survey on March 20 19 98, do hereby certify that under requirements of P.A. 74 Michigan P.A. of 1970, the corner points mentioned in lines 1 and 2 above were in conformance with regulations and rules therefore as required in the current manual of survey instructions of the United States Department of the interior, Bureau of Land Management or by a decree of a Court of Law and/or that the corner points mentioned in lines 3, 4 and 5 above were in conformance with the rules of the Michigan Board of Land Surveyors or by a Decree of a Court of Law; established, re-established, monumented, re-monumented, recovered, found as expressed below:

NOTE: Not more than 4 corners, all in the same town and range, may be recorded on this certificate.

A. Description of original monument and accessories and/or subsequent restoration:

E-4	1837	G.L.O. Notes	Cathcart	Set Post
	1978	L.C.R.C. #1177	Medema, Van Kooten & Assoc.	3/4" Iron
	1980	L.C.R.C. #1422	Moore & Bruggink, Inc.	Iron
	1981	L.C.R.C. #1874	Jonker Land Survey	Fnd. 3/4" Round Iron / Set K.C. Monument
	1994	L.C.R.C. #8014	Glaza & Associates	K.C. Monument

P.A. 345 1990 KENT COUNTY
PEER APPROVED 6/29/98
CHAIRMAN Frank Huber

This corner was originally approved by the Kent County Remonumentation Peer Group and monumented by Rob Jonker on 6/4/81 and was recorded per L.C.R.C. #1874.

B. Description of corner evidence found and/or method applied in restoring or reestablishing corner:

E-4 Found a Standard Kent County Monument in a swamp per L.C.R.C.'s #1874 and #8014 as set by Rob Jonker in place of a 3/4" round iron he found which checked L.C.R.C.'s #1422 and #1177.

L.C.R.C. #1874

L.C.R.C. #8014

Remon. tag on NW side tw. 12" Oak S30°W 53.98'
Remon. tag on SW side 10" W.Cherry S60°E 120.03'
Remon. tag on SW side 18" Hickory S45°E 107.73'
Remon. tag on SW side tw. 12" Ch. N85°W 57.82'
Remon. tag on NW side 6" Elm N15°E 23.98'

K.C. remon tag & nail in NW side 24" Twin Oak S30°W 53.98'
K.C. remon tag & nail in SW side 12" W. Cherry S60°E 120.11' (m. 120.09')
K.C. remon tag & nail in SW side 18" Hickory S45°E 107.65' (m. 107.63')
K.C. remon tag & nail in SW side 12" Twin Cherry N85°W 57.82'
K.C. remon tag & nail in NW side 10" Elm (stump) N15°E 24.04' (m. 24.05')

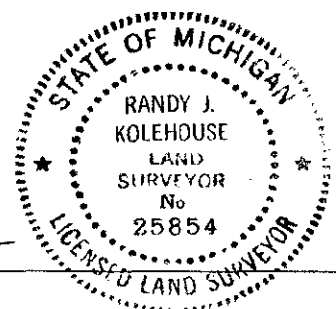
The selected location is accepted by me and is generally accepted by professional surveyors as the best available evidence of the position of the original corner.

C. Description of monument for corner and accessories established to perpetuate locating the position of the corner:

E-4 Standard Kent County Monument

- Nail & K.C. remon. tag on NW side 24" twin Oak S 30° W 53.98'
- Nail & K.C. remon. tag on SW side 12" W. Cherry S 60° E 120.09'
- Nail & K.C. remon. tag on SW side 18" Hickory S 45° E 107.63'
- Nail & K.C. remon. tag on SW side 12" twin Cherry N 85° W 57.82'
- Nail & K.C. remon. tag on NW side 10" Elm (stump) N 15° E 24.05'

Signed by Randy J. Kolehouse Date 9-1-98
EARTH TECH



Surveyor's Michigan License No. 25854