

\$7.00
\$2.00

SURVEY &
REMONUMENTATION

SEP 08 1999

LAND CORNER RECORDATION CERTIFICATE
Filing Requirement of Act 74, Mich. P.A. 1970
KENT COUNTY REMONUMENTATION

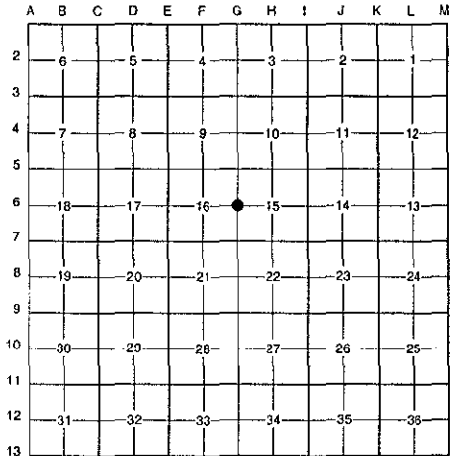
STATE OF MICHIGAN
COUNTY OF KENT
RECEIVED FOR RECORD
98 OCT 23 AM 9:59
REG. OF DEEDS
Lucy Standa

For corners in	SECTION	Located in:	Grattan Township	Corner Code #
Kent (County)				
1. Public Land Survey	T <u>8N</u>	R <u>9W</u>		<u>G-6</u>
	T _____	R _____		_____
	T _____	R _____		_____
	T _____	R _____		_____
2. Property Controlling in Section	S _____	T _____	R _____	_____
	S _____	T _____	R _____	_____
3. Miscellaneous Property in Sec.	S _____	T _____	R _____	_____
	S _____	T _____	R _____	_____

10871
Register of Deeds Stamp & File Number

4. Lot No. _____, Recorded Plat _____
5. Private Claims _____

I, Randy Kolehouse, in a field survey on February 4 19 98, do hereby certify that under requirements of P.A. 74 Michigan P.A. of 1970, the corner points mentioned in lines 1 and 2 above were in conformance with regulations and rules therefore as required in the current manual of survey instructions of the United States Department of the Interior, Bureau of Land Management or by a decree of a Court of Law and/or that the corner points mentioned in lines 3, 4 and 5 above were in conformance with the rules of the Michigan Board of Land Surveyors or by a Decree of a Court of Law; established, re-established, monumented, re-monumented, recovered, found as expressed below:



NOTE: Not more than 4 corners, all in the same town and range, may be recorded on this certificate.

A. Description of original monument and accessories and/or subsequent restoration:

G-6	1837	G.L.O. Notes	Cathcart	Set Post
	1941	Witness Map	K.C. Surveyor	3/4" Iron
	1973	L.C.R.C. #543	Williams & Works	3/4" Iron
	1981	L.C.R.C. #1880	Jonker Land Survey	Fnd. "T" Iron / Set K.C. Monument
	1994	L.C.R.C. # 8037	Glaza & Associates	K.C. Monument

P.A. 345 1990 KENT COUNTY
PEER APPROVED 6/25/98
CHAIRMAN *Harry Fisher*

This corner was originally approved by the Kent County Remonumentation Peer Group and monumented by Rob Jonker on 6/4/81 and was recorded per L.C.R.C. #1880.

B. Description of corner evidence found and/or method applied in restoring or reestablishing corner:

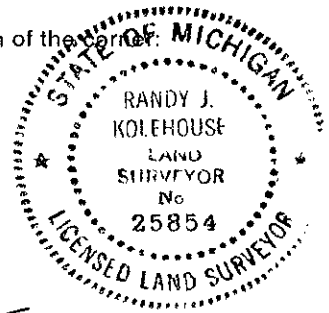
G-6 Found a Standard Kent County Monument 15' East of the C/L of Corrigan Road (gravel) running North and South, on line of South line of gravel drive running East, on line of a tree row running West per L.C.R.C.'s #1880 and #8037 as set by Rob Jonker in place of a "T" iron he found at grade over a 3/4" round iron 1.5' below grade which checked L.C.R.C. #543 and the K.C. Surveyor's records.

L.C.R.C. #1880	L.C.R.C. #8037
Remon. tag on S. side 40" oak-West 44.25'	K.C. remon tag & nail in S side 40" Oak West 44.27' (m. 44.28')
Remon. tag on NW side 12" oak S55°W 45.96'	K.C. remon tag & nail in NW side 17" Oak S55°W 45.98' (m. 45.97')
C/L gravel road - W. 15'	K.C. remon tag & nail in W side 11" Twin Oak S20°E 34.03' (m. 34.06')
	C/L gravel road - West 15'

The selected location is accepted by me and is generally accepted by professional surveyors as the best available evidence of the position of the original corner.

C. Description of monument for corner and accessories established to perpetuate locating the position of the corner:

G-6 Standard Kent County Monument
Nail & K.C. remon. tag on S side 40" Oak West 44.28'
Nail & K.C. remon. tag on NW side 18" Oak S 55° W 45.97'
Nail & K.C. remon. tag on W side 12" Twin Oak S 20° E 34.06'
Nail & K.C. remon. tag on W side fence post N 15° E 41.87'
C/L of gravel road running N-S, West 15'
On tree row running W



Signed by *Randy J. Kolehouse* Date 9-1-98
EARTH TECH
Surveyor's Michigan License No. 25854