

REMONUMENTATION
 \$1.00
 \$2.00

MAR 08 1999

LAND CORNER RECORDATION CERTIFICATE
 Filing Requirement of Act 74, Mich. P.A. 1970
 KENT COUNTY REMONUMENTATION

For corners in SECTION

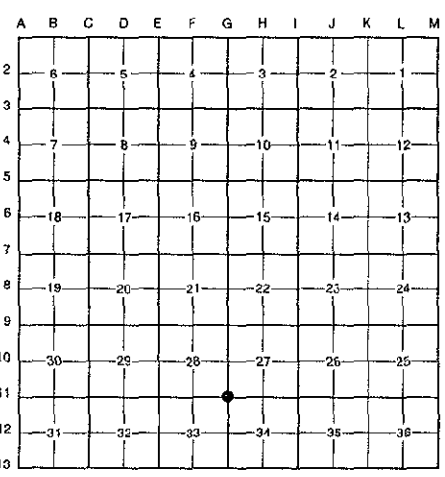
<u>Kent</u> (County)	Located in: Grattan Township	Corner Code #
1. Public Land Survey	T <u>8N</u> R <u>9W</u>	<u>G-11</u>
	T _____ R _____	_____
	T _____ R _____	_____
	T _____ R _____	_____
2. Property Controlling in Section	S _____ T _____ R _____	_____
	S _____ T _____ R _____	_____
3. Miscellaneous Property in Sec.	S _____ T _____ R _____	_____
	S _____ T _____ R _____	_____
4. Lot No. _____, Recorded Plat _____		
5. Private Claims _____		

STATE OF MICHIGAN
 COUNTY OF KENT
 RECEIVED FOR RECORD
 38 OCT 23 AM 9:59
 REG. OF DEEDS
Lucy Standa

10876

Register of Deeds Stamp & File Number

I, Randy Kolehouse, in a field survey on February 2 19 98, do hereby certify that under requirements of P.A. 74 Michigan P.A. of 1970, the corner points mentioned in lines 1 and 2 above were in conformance with regulations and rules therefore as required in the current manual of survey instructions of the United States Department of the interior, Bureau of Land Management or by a decree of a Court of Law and/or that the corner points mentioned in lines 3, 4 and 5 above were in conformance with the rules of the Michigan Board of Land Surveyors or by a Decree of a Court of Law; established, re-established, monumented, re-monumented, recovered, found as expressed below:



NOTE: Not more than 4 corners, all in the same town and range, may be recorded on this certificate.

A. Description of original monument and accessories and/or subsequent restoration:

G-11	1837	G.L.O. Notes	Cathcart	Set Post
	1880	Notes	Williams & Works	Set Stone
	1941	Witness Map	K.C. Surveyor	1" Iron Pipe
	1944	Notes	Williams & Works	Iron Over Stone
	1984	L.C.R.C. #3755	R. Kolehouse	Fnd. Iron in Mon. Box / Set K.C. Monument
	1994	L.C.R.C. #8042	Glaza & Associates	K.C. Monument

P.A. 345 1990 KENT COUNTY
 PEER APPROVED 6/25/98
 CHAIRMAN Harry Huber

This corner was originally approved by the Kent County Remonumentation Peer Group and monumented by Randy Kolehouse in February 1984 and was recorded per L.C.R.C. #3755.

B. Description of corner evidence found and/or method applied in restoring or reestablishing corner:

G-11 Found a Standard Kent County Monument in a monument box on the C/L of 5 Mile Road (bit.) running East and West, on line of a tree row running North, per L.C.R.C.'s #3755 and #8042 as set by Randy Kolehouse in place of a iron he found in a monument box which checked the notes of Williams & Works and the K.C. Surveyor's records.

L.C.R.C. #3755

- Nail & K.C. Remon. tag in NW side twin 26" Pine S 60° W 82.83'
- Nail & K.C. Remon. tag in E. side P. Pole S 20° W 124.80'
- Nail & K.C. Remon. tag in E. side P. Pole N 05° W 66.70'
- N.W. corner barn South 129.42'
- N.W. corner barn foundation S 50° E 100.9'

L.C.R.C. #8042

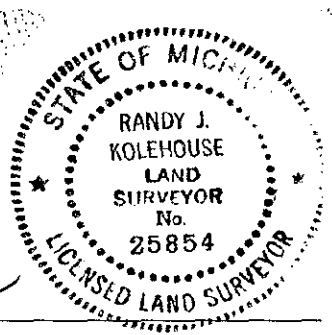
- Nail & K.C. remon tag in NW side 28" Twin Pine S60°W 82.99' (m. 83.01')
- Nail & K.C. remon tag in E side P. pole S20°W 124.82' (m. 124.87')
- Nail & K.C. remon tag in E side P. pole N05°W 66.71' (m. 66.69')
- NW corner barn South 129.42' (m. 129.63')
- NW corner barn foundation S50°E 100.8' (m. 100.81')

The selected location is accepted by me and is generally accepted by professional surveyors as the best available evidence of the position of the original corner.

C. Description of monument for corner and accessories established to perpetuate locating the position of the corner:

G-11 Standard Kent County Monument in a Monument Box

- Nail & K.C. remon. tag on NW side 28" Twin Pine S 60° W 83.01'
- Nail & K.C. remon. tag on E side P. pole S 20° W 124.87'
- Nail & K.C. remon. tag on E side P. pole N 05° W 66.69'
- NW cor. barn South 129.63'
- NW cor. barn fndn. S 50° E 100.81'
- On C/L bit. road running E-W
- On tree row running N



Signed by Randy J. Kolehouse Date 9-1-98
 EARTH TECH

Surveyor's Michigan License No. 25854