

**SURVEY &
REMONUMENTATION**

MAR 08 1999

**LAND CORNER RECORDATION CERTIFICATE
Filing Requirement of Act 74, Mich. P.A. 1970
KENT COUNTY REMONUMENTATION**

For corners in SECTION

Kent (County)	Located in:	Grattan Township	Corner Code #
1. Public Land Survey	T <u>8N</u>	R <u>9W</u>	<u>H-6</u>
	T _____	R _____	_____
	T _____	R _____	_____
	T _____	R _____	_____
2. Property Controlling in Section	S _____	T _____	R _____
	S _____	T _____	R _____
3. Miscellaneous Property in Sec.	S _____	T _____	R _____
	S _____	T _____	R _____

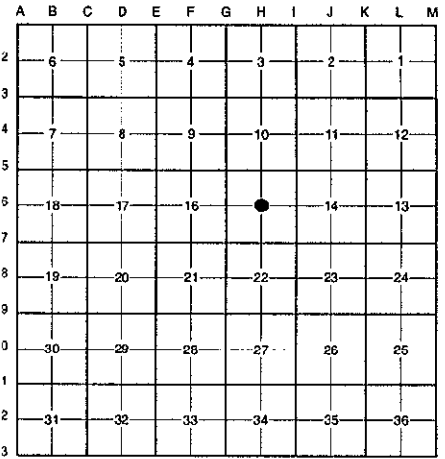
STATE OF MICHIGAN
COUNTY OF KENT
RECEIVED FOR RECORDING
98 DEC 14 AM 8:00
REG. OF DEEDS
Lucy St. Paul

11046

Register of Deeds Stamp & File Number

4. Lot No. _____, Recorded Plat _____
5. Private Claims _____

I, Randy Kolehouse, in a field survey on November 19 19 98, do hereby certify that under requirements of P.A. 74 Michigan P.A. of 1970, the corner points mentioned in lines 1 and 2 above were in conformance with regulations and rules therefore as required in the current manual of survey instructions of the United States Department of the interior, Bureau of Land Management or by a decree of a Court of Law and/or that the corner points mentioned in lines 3, 4 and 5 above were in conformance with the rules of the Michigan Board of Land Surveyors or by a Decree of a Court of Law; established, re-established, monumented, re-monumented, recovered, found as expressed below:



NOTE: Not more than 4 corners, all in the same town and range, may be recorded on this certificate.

A. Description of original monument and accessories and/or subsequent restoration:

H-6 This corner was not originally set by the G.L.O.
1968 Survey Records Williams & Works Set Iron at Intersection of 1/4 Lines

P.A. 345 1990 KENT COUNTY
PEER APPROVED 12/20/98
CHAIRMAN Randy Huber

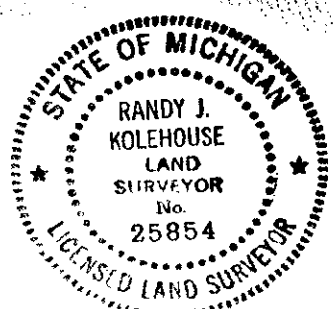
B. Description of corner evidence found and/or method applied in restoring or reestablishing corner:

H-6 Found a "T" iron, as set by Williams & Works at the intersection of 1/4 lines in 1968, on line of a tree row running South and West and 40' ± South of a tree row running East. "T" iron is 1' South and 0.3' East of the intersection of 1/4 lines. Accepted "T" iron as Center of Section.

The selected location is accepted by me and is generally accepted by professional surveyors as the best available evidence of the position of the original corner.

C. Description of monument for corner and accessories established to perpetuate locating the position of the corner:

H-6 Replaced "T" Iron with a Standard Kent County Monument
Nail & K.C. remon. tag on E side 14" Tripple Maple S 30° W 30.05'
Nail & K.C. remon. tag on S'y side 12" Maple S 84° W 27.80'
Nail & K.C. remon. tag on SW'y side 10" Elm North 24° W 31.26'
Nail & K.C. remon. tag on W side 12" Oak N 38° E 18.11'
On tree row running running S-W
Tree row running East, North 40' ±



Signed by Randy J. Kolehouse Date 12-4-98
EARTH TECH
Surveyor's Michigan License No. 25854