

SURVEY & REMONUMENTATION

\$7.00
\$2.00

MAR 08 1999

LAND CORNER RECORDATION CERTIFICATE
Filing Requirement of Act 74, Mich. P.A. 1970
KENT COUNTY REMONUMENTATION

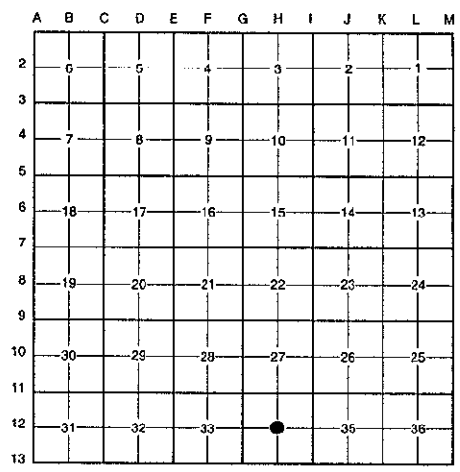
STATE OF MICHIGAN
COUNTY OF KENT
RECEIVED FOR RECORD
98 DEC 14 AM 8:00
REG. OF DEEDS
Lucy St. Paul
11048

For corners in	SECTION	Located in:	Grattan Township	Corner Code #
Kent (County)				
1. Public Land Survey		T <u>8N</u>	R <u>9W</u>	H-12
		T _____	R _____	_____
		T _____	R _____	_____
		T _____	R _____	_____
2. Property Controlling in Section	S _____	T _____	R _____	_____
	S _____	T _____	R _____	_____
3. Miscellaneous Property in Sec.	S _____	T _____	R _____	_____
	S _____	T _____	R _____	_____

Register of Deeds Stamp & File Number

4. Lot No. _____, Recorded Plat _____
5. Private Claims _____

I, Randy Kolehouse, in a field survey on October 14 19 98, do hereby certify that under requirements of P.A. 74 Michigan P.A. of 1970, the corner points mentioned in lines 1 and 2 above were in conformance with regulations and rules therefore as required in the current manual of survey instructions of the United States Department of the interior, Bureau of Land Management or by a decree of a Court of Law and/or that the corner points mentioned in lines 3, 4 and 5 above were in conformance with the rules of the Michigan Board of Land Surveyors or by a Decree of a Court of Law; established, re-established, monumented, re-monumented, recovered, found as expressed below:



NOTE: Not more than 4 corners, all in the same town and range, may be recorded on this certificate.

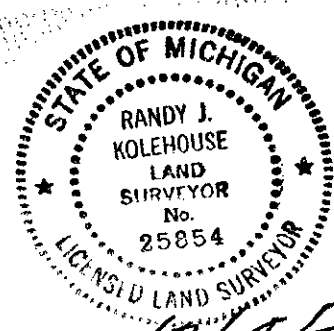
A. Description of original monument and accessories and/or subsequent restoration:
H-12 This corner was not originally set by the G.L.O.
No information on record for this corner.

P.A. 345 1990 KENT COUNTY
PEER APPROVED 10/22/98
CHAIRMAN Gary Huber

B. Description of corner evidence found and/or method applied in restoring or reestablishing corner:
H-12 Set a monument at the intersection of 1/4 lines. Monument is at corner of fence lines running South and West and on line of a tree row running East, West and South.

The selected location is accepted by me and is generally accepted by professional surveyors as the best available evidence of the position of the original corner.

C. Description of monument for corner and accessories established to perpetuate locating the position of the corner:
H-12 Set a Standard Kent County Monument
Nail & K.C. remon. tag on E side 30" Oak S 10° W 9.55'
Nail & K.C. remon. tag on S side 30" Oak N 75° W 16.32'
Nail & K.C. remon. tag on E side 4" Cherry N 30° W 4.45'
Nail & K.C. remon. tag on N side 8" Maple S 85° E 18.97'
"T" iron S 80° E 3.07'
At corner of fence lines running S-W
On tree row running E-W-S



Signed by Randy J. Kolehouse Date 12/4/98
EARTH TECH
Surveyor's Michigan License No. 25854