

**SURVEY &
REMONUMENTATION**

MAY 22 2000

LAND CORNER RECORDATION CERTIFICATE
Filing Requirement of Act 74, Mich. P.A. 1970
KENT COUNTY REMONUMENTATION

For corners in	SECTION	Located in:	Grattan Township	Corner Code #
<u>Kent</u> (County)				
1. Public Land Survey	T <u>8N</u>	R <u>9W</u>		<u>L-2</u>
	T _____	R _____		_____
	T _____	R _____		_____
	T _____	R _____		_____
2. Property Controlling in Section	S _____	T _____	R _____	_____
	S _____	T _____	R _____	_____
3. Miscellaneous Property in Sec.	S _____	T _____	R _____	_____
	S _____	T _____	R _____	_____

leg 2

1999 DEC 30 AM 9:54
RECEIVED FOR RECORD
STATE OF MICHIGAN
COUNTY OF KENT

REG. OF DEEDS

11690

Register of Deeds Stamp & File Number

4. Lot No. _____, Recorded Plat _____
5. Private Claims _____

I, Randy Kolehouse, in a field survey on December 29 19 99, do hereby certify that under requirements of P.A. 74 Michigan P.A. of 1970, the corner points mentioned in lines 1 and 2 above were in conformance with regulations and rules therefore as required in the current manual of survey instructions of the United States Department of the interior, Bureau of Land Management or by a decree of a Court of Law and/or that the corner points mentioned in lines 3, 4 and 5 above were in conformance with the rules of the Michigan Board of Land Surveyors or by a Decree of a Court of Law; established, re-established, monumented, re-monumented, recovered, found as expressed below:

NOTE: Not more than 4 corners, all in the same town and range, may be recorded on this certificate.

A. Description of original monument and accessories and/or subsequent restoration:

L-2 This corner was not originally set by the G.L.O.

1961	Witness Map	K.C. Surveyor	1/2" Iron
1998	L.C.R.C. #11074	Earth Tech	K.C. Monument

This corner was originally approved by the Kent County Remonumentation Peer Group and monumented by Randy Kolehouse on 10/28/98 and was recorded per L.C.R.C. #11074.

B. Description of corner evidence found and/or method applied in restoring or reestablishing corner:

L-2 Found a Standard Kent County Monument per L.C.R.C. #11074 witnesses as set by Earth Tech.

L.C.R.C. #11074

Nail & K.C. remon. tag on W side wood fence post N 13° E 33.63'
Nail & K.C. remon. tag on NW side P. pole S 46° W 39.34'
Nail & K.C. remon. tag on NE side 10" Apple S 20° E 43.97'
Nail & K.C. remon. tag on NE side 10" Apple S 48° E 69.84'
On C/L bit. road running E-W

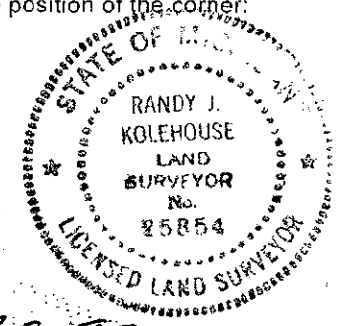
P.A. 345 1990 KENT COUNTY
PEER APPROVED 10/22/98
CHAIRMAN *Harry Huber*

The selected location is accepted by me and is generally accepted by professional surveyors as the best available evidence of the position of the original corner.

C. Description of monument for corner and accessories established to perpetuate locating the position of the corner:

L-2 Reset a Standard Kent County Monument - Also Set a Monument Box

Nail & K.C. remon. tag on W side wood fence post N 13° E 33.63'
Nail & K.C. remon. tag on NW side P. pole S 46° W 39.34'
Nail & K.C. remon. tag on NE side 10" Apple S 20° E 43.97'
Nail & K.C. remon. tag on NE side 10" Apple S 48° E 69.84'
On C/L bit. road running E-W



Signed by *Randy J. Kolehouse*
WILLIAMS & WORKS

Date 12-29-99

Surveyor's Michigan License No. 25854