

**SURVEY & REMONUMENTATION**

MAR 03 1998

**LAND CORNER RECORDATION CERTIFICATE**  
**Filing Requirement of Act 74, Mich. P.A. 1970**  
**KENT COUNTY REMONUMENTATION**

**SECTION**

For corners in

For corners in	Located in:	Cannon Township	Corner Code #
<u>Kent</u> (County)			
1. Public Land Survey	T <u>8N</u>	R <u>10W</u>	<u>B-5</u>
	T _____	R _____	_____
	T _____	R _____	_____
	T _____	R _____	_____
2. Property Controlling in Section	S _____	T _____	R _____
	S _____	T _____	R _____
3. Miscellaneous Property in Sec.	S _____	T _____	R _____
	S _____	T _____	R _____

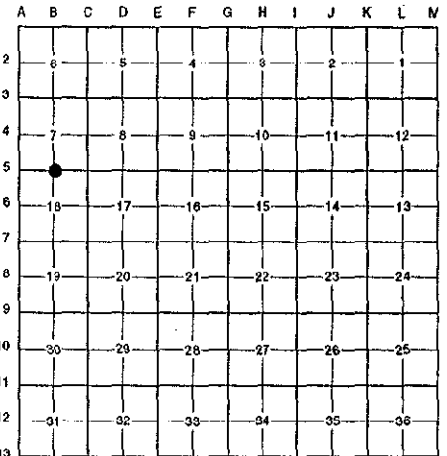
STATE OF MICHIGAN  
 COUNTY OF KENT  
 RECEIVED FOR RECORD  
 97 OCT 15 AM 8:43  
 REG. OF DEEDS  
*Lucy J. Board*

**10079**

Register of Deeds Stamp & File Number

4. Lot No. \_\_\_\_\_, Recorded Plat \_\_\_\_\_  
 5. Private Claims \_\_\_\_\_

I, Randy Kolehouse, in a field survey on June 10 19 97, do hereby certify that under requirements of P.A. 74 Michigan P.A. of 1970, the corner points mentioned in lines 1 and 2 above were in conformance with regulations and rules therefore as required in the current manual of survey instructions of the United States Department of the interior, Bureau of Land Management or by a decree of a Court of Law and/or that the corner points mentioned in lines 3, 4 and 5 above were in conformance with the rules of the Michigan Board of Land Surveyors or by a Decree of a Court of Law; established, re-established, monumented, re-monumented, recovered, found as expressed below:



**NOTE: Not more than 4 corners, all in the same town and range, may be recorded on this certificate.**

**A. Description of original monument and accessories and/or subsequent restoration:**

B-5	1831	G.L.O. Notes	Mullett	Set Post
	1930	Witness Map	K.C. Surveyor	Gas Pipe & Stone
	1976	L.C.R.C. #964	Exxel Engineering	3/4" Solid Iron in Monument Box
	1976	L.C.R.C. #992	Medema, Van Kooten & Assoc.	3/4" Solid Iron in Monument Box
	1981	L.C.R.C. #2355	Jonker Land Surveys	Fnd. 3/4" Solid Bar in Mon. Box / Set K.C. Monument In Mon. Box
	1992	L.C.R.C. #6269	Chris Marschall	K.C. Monument

This corner was originally approved by the Kent County Remonumentation Peer Group and monumented by Rob Jonker on 11/11/81 and was recorded per L.C.R.C. #2355.

**B. Description of corner evidence found and/or method applied in restoring or reestablishing corner:**

B-5 Found a Standard Kent County Monument (without a brass cap) 6' South of the C/L of Belding Road (bit.) running East and West on line of a tree row running South per L.C.R.C.'s #2355 and #6269 as set by Rob Jonker in place of a 3/4" x 42" solid bar he found in a monument box which checked L.C.R.C.'s #992, #964 and the K.C. Surveyor's records.

L.C.R.C. #2355

Remon. tag on E side p. pole S17°W 44.51'  
 Remon. tag on W side t. pole N22°W 53.30'  
 Remon tag on NW side p. pole S57°E 97.82'

L.C.R.C. #6269

Nail & Tag E sd. P.P. S 13 W 44.51'  
 Nail & Tag NE sd. P.P. S 61 E 97.85'  
 Nail & Tag E sd. 10" W. Cherry N 40 E 67.82'  
 Nail & Tag W sd. U.P. N 26 W 53.25'

The selected location is accepted by me and is generally accepted by professional surveyors as the best available evidence of the position of the original corner.

**C. Description of monument for corner and accessories established to perpetuate locating the position of the corner:**

B-5 Standard Kent County Monument

Nail & K.C. remon. tag on E side P. pole S 13° W 44.51'  
 Nail & K.C. remon. tag on NE side P. pole S 61° E 97.85'  
 Nail & K.C. remon. tag on E side 10" W. Cherry N 40° E 67.82'  
 Nail & K.C. remon. tag on W side P. pole N 26° W 53.25'



Signed by Randy J. Kolehouse  
 EARTH TECH

Date 8/12/97

Surveyor's Michigan License No. 25854

P.A. 345 1990 KENT COUNTY

PEER APPROVED 6/26/97

CHAIRMAN Henry J. Hubert