

# SURVEY & REMONUMENTATION

MAR 03 1998

## LAND CORNER RECORDATION CERTIFICATE

Filing Requirement of Act 74, Mich. P.A. 1970

SECTION

KENT COUNTY REMONUMENTATION

For corners in

Kent (County)	Located in:	Cannon Township	Corner Code #
1. Public Land Survey	T <u>8N</u>	R <u>10W</u>	<u>B-8</u>
	T _____	R _____	_____
	T _____	R _____	_____
	T _____	R _____	_____
2. Property Controlling in Section	S _____	T _____	R _____
	S _____	T _____	R _____
3. Miscellaneous Property in Sec.	S _____	T _____	R _____
	S _____	T _____	R _____

4. Lot No. \_\_\_\_\_, Recorded Plat \_\_\_\_\_  
5. Private Claims \_\_\_\_\_

STATE OF MICHIGAN  
 COUNTY OF KENT  
 RECEIVED FOR RECORD  
 97 DEC 15 AM 10:43  
 REG. OF DEEDS  
*Eric Storch*

10386

Register of Deeds Stamp & File Number

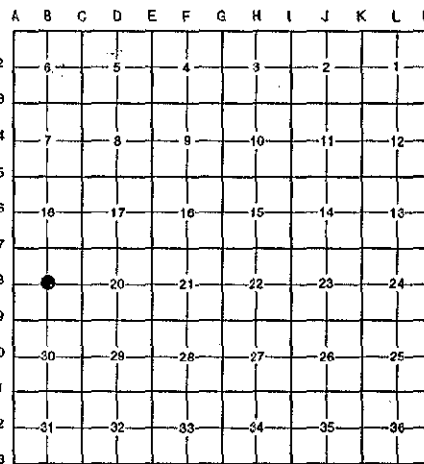
I, Randy Kolehouse, in a field survey on October 10 19 97, do hereby certify that under requirements of P.A. 74 Michigan P.A. of 1970, the corner points mentioned in lines 1 and 2 above were in conformance with regulations and rules therefore as required in the current manual of survey instructions of the United States Department of the Interior, Bureau of Land Management or by a decree of a Court of Law and/or that the corner points mentioned in lines 3, 4 and 5 above were in conformance with the rules of the Michigan Board of Land Surveyors or by a Decree of a Court of Law; established, re-established, monumented, re-monumented, recovered, found as expressed below:

**NOTE:** Not more than 4 corners, all in the same town and range, may be recorded on this certificate.

A. Description of original monument and accessories and/or subsequent restoration:

B-8 This corner was not originally set by the G.L.O.

1943	Witness Map	K.C. Surveyor	2" Iron
1974	L.C.R.C. #673	Medema, Van Kooten & Assoc.	"T" Iron
1983	L.C.R.C. #3666	Exxel Engineering	Set Capped Iron



B. Description of corner evidence found and/or method applied in restoring or reestablishing corner:

B-8 Found a capped iron 36' ± West of the C/L of Blakley Drive (bit.) running North and South on line of a tree row running East and an old fence line running West per L.C.R.C. #3666 as set by Exxel Engineering at the intersection of 1/4 lines. Capped iron is 0.2' South and 0.2' West of the intersection of 1/4 lines. Accepted iron as Center of Section.

L.C.R.C. #3666

- Nail in NE sde 14" Oak NW 65.19'
- Nail in E'ly sde 24" Oak NNW 67.67'

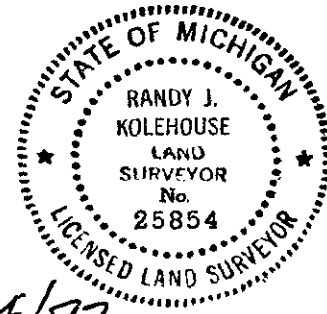
The selected location is accepted by me and is generally accepted by professional surveyors as the best available evidence of the position of the original corner.

C. Description of monument for corner and accessories established to perpetuate locating the position of the corner:

B-8 Replaced Capped Iron with a Standard Kent County Monument

- Nail & K.C. remon. tag on NE side 14" Oak NW 65.19'
- Nail & K.C. remon. tag on E'ly side 24" Oak NNW 67.67'
- Nail & K.C. remon. tag on N side 8" Sassafras S 40° W 29.07'
- Nail & K.C. remon. tag on S side 8" Elm N 88° West 27.15'
- Nail & K.C. remon. tag on NE side 8" Sassafras N 45° W 23.60'
- Nail & K.C. remon. tag on W side 7" Sassafras N 15° W 27.13'

P.A. 345 1990 KENT COUNTY  
 PEER APPROVED 10/30/97  
 CHAIRMAN *Randy Kolehouse*



Signed by *Randy J. Kolehouse* Date 11/24/97

Surveyor's Michigan License No. 25854