

SURVEY & REMONUMENTATION

MAR 03 1998

SECTION

LAND CORNER RECORDATION CERTIFICATE
 Filing Requirement of Act 74, Mich. P.A. 1970
 KENT COUNTY REMONUMENTATION

For corners in

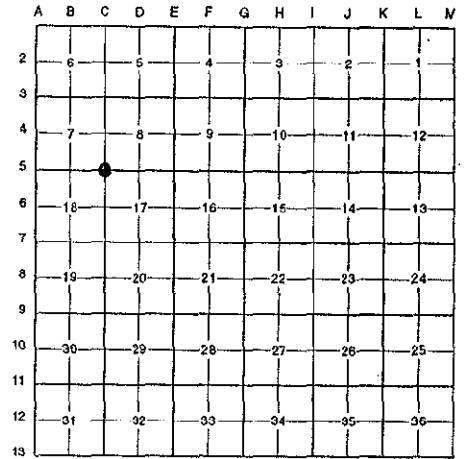
Kent (County)	Located in: Cannon Township	Corner Code #
1. Public Land Survey	T <u>8N</u> R <u>10W</u>	<u>C-5</u>
	T _____ R _____	_____
	T _____ R _____	_____
	T _____ R _____	_____
2. Property Controlling in Section	S _____ T _____ R _____	_____
	S _____ T _____ R _____	_____
3. Miscellaneous Property in Sec.	S _____ T _____ R _____	_____
	S _____ T _____ R _____	_____

STATE OF MICHIGAN
 COUNTY OF KENT
 RECEIVED FOR RECORD
 97 OCT 15 AM 8:44
 REG. OF DEEDS
Lucy Bond

10087

Register of Deeds Stamp & File Number

4. Lot No. _____, Recorded Plat _____
 5. Private Claims _____



I, Randy Kolehhouse, in a field survey on June 10 19 97, do hereby certify that under requirements of P.A. 74 Michigan P.A. of 1970, the corner points mentioned in lines 1 and 2 above were in conformance with regulations and rules therefore as required in the current manual of survey instructions of the United States Department of the interior, Bureau of Land Management or by a decree of a Court of Law and/or that the corner points mentioned in lines 3, 4 and 5 above were in conformance with the rules of the Michigan Board of Land Surveyors or by a Decree of a Court of Law; established, re-established, monumented, re-monumented, recovered, found as expressed below:

NOTE: Not more than 4 corners, all in the same town and range, may be recorded on this certificate.

A. Description of original monument and accessories and/or subsequent restoration:

C-5	1831	G.L.O. Notes	Mullett	Set Post
	1930	Witness Map	K.C. Surveyor	Gas Pipe
	1974	L.C.R.C. #777	Nederveld & Jonker	Iron in Monument Box
	1976	L.C.R.C. #964	Exxel Engineering	1/2" Solid Rod in Mon. Box
	1981	L.C.R.C. #2359	Jonker Land Surveys	Fnd. 1/2" Rod in Mon. Box / Set K.C. Monument in Mon. Box
	1992	L.C.R.C. #6277	Chris Marschall	K.C. Monument

This corner was originally approved by the Kent County Remonumentation Peer Group and monumented by Rob Jonker on 11/11/81 and was recorded per L.C.R.C. #2359.

B. Description of corner evidence found and/or method applied in restoring or reestablishing corner:

C-5 Found a Standard Kent County Monument 1' South of the C/L of Belding Road (bit.) running East and West and 2' West of the C/L of Blakely Drive (bit.) running North and 6' West of the C/L of Blakely Drive running South per L.C.R.C.'s #2359 and #6277 as set by Rob Jonker in place of a 1/2" rod he found in a monument box which checked L.C.R.C.'s #964, #777 and the K.C. Surveyor's records.

L.C.R.C. #2359

L.C.R.C. #6277

Remon. tag on NW side p. pole S44°W 69.59'
 Remon. tag on SW side t. pole N32°W 53.40'
 Remon. tag on S side t. pole N75°E 138.75'

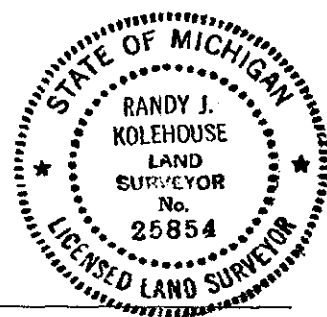
Nail & Tag SW sd. U.P. N 36 W 51.65'
 Nail & Tag NW sd. U.P. S 41 W 69.60'
 Nail & Tag S sd. P.P. (5' above grd) N 72 E 138.77'
 Nail & Tag SE sd. Guy Pole N 46 E 64.13'
 Nail & Tag W sd. 10" Spruce S 22 E 104.48' (m. 104.92')

The selected location is accepted by me and is generally accepted by professional surveyors as the best available evidence of the position of the original corner.

C. Description of monument for corner and accessories established to perpetuate locating the position of the corner:

C-5 Standard Kent County Monument

- Nail & K.C. remon. tag on SW side Util. pole N 36° W 51.65'
- Nail & K.C. remon. tag on NW side Util. pole S 41° W 69.60'
- Nail & K.C. remon. tag on S side P. pole (5' above grade) N 72° E 138.77'
- Nail & K.C. remon. tag on SE side Guy pole N 46° E 64.13'
- Nail & K.C. remon. tag on W side 12" Spruce S 22° E 104.92'



Signed by Randy J. Kolehhouse Date 8/12/97
 EARTH TECH

Surveyor's Michigan License No. 25854