

SURVEY & REMONUMENTATION

MAR 03 1998

\$7.00
\$2.00

SECTION

LAND CORNER RECORDATION CERTIFICATE
Filing Requirement of Act 74, Mich. P.A. 1970
KENT COUNTY REMONUMENTATION

For corners in

Kent
(County)

Located in: Cannon
Township

Corner Code #

1. Public Land Survey	T <u>8N</u>	R <u>10W</u>	<u>D-4</u>
	T _____	R _____	_____
	T _____	R _____	_____
	T _____	R _____	_____
2. Property Controlling in Section	S _____	T _____	R _____
	S _____	T _____	R _____
3. Miscellaneous Property in Sec.	S _____	T _____	R _____
	S _____	T _____	R _____

4. Lot No. _____, Recorded Plat _____
5. Private Claims _____

STATE OF MICHIGAN
COUNTY OF KENT
RECEIVED FOR RECORD
97 DEC 15 AM 10:43
REG. OF DEEDS
Luigi Bond

10389

Register of Deeds Stamp & File Number

I, Randy Kolehouse, in a field survey on November 14 19 97, do hereby certify that under requirements of P.A. 74 Michigan P.A. of 1970, the corner points mentioned in lines 1 and 2 above were in conformance with regulations and rules therefore as required in the current manual of survey instructions of the United States Department of the interior, Bureau of Land Management or by a decree of a Court of Law and/or that the corner points mentioned in lines 3, 4 and 5 above were in conformance with the rules of the Michigan Board of Land Surveyors or by a Decree of a Court of Law; established, re-established, monumented, re-monumented, recovered, found as expressed below:

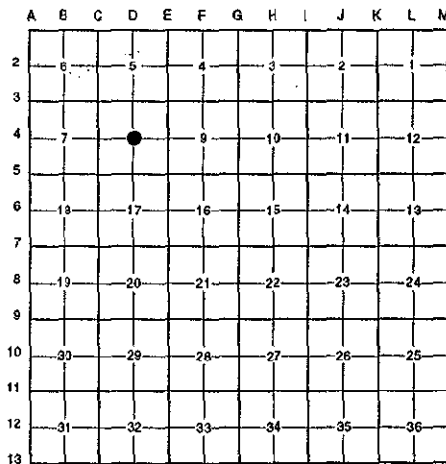
NOTE: Not more than 4 corners, all in the same town and range, may be recorded on this certificate.

A. Description of original monument and accessories and/or subsequent restoration:

D-4 This corner was not originally set by the G.L.O.

1993 Bella Vista Shores No. 13 L. 97 P. 12

Found no additional information on record. Also checked Kent County Surveyor's witness map and found no information pertaining to this corner.



P.A. 345 1990 KENT COUNTY

PEER APPROVED 10/30/97

CHAIRMAN *Harry Kubicek*

B. Description of corner evidence found and/or method applied in restoring or reestablishing corner:

D-4 Bella Vista Shores No. 13 illustrates the center of Section 8 to be set on the E-W 1/4 line 158.0' East of the West line of said subdivision. Reset this corner 158.0' East of found Iron on the West line of Bella Vista Shores No. 13 (iron is on East-West 1/4 line) on the extension of a line using said iron and West 1/4 line. This point is 0.10' North and 0.6' East of the intersection of 1/4 lines.

The selected location is accepted by me and is generally accepted by professional surveyors as the best available evidence of the position of the original corner.

C. Description of monument for corner and accessories established to perpetuate locating the position of the corner:

D-4 Set a Standard Kent County Monument

- Nail & K.C. remon. tag on E side 16" Oak S 05W 96.27'
- SE cor. fr. garage (House #7190) N 60° W 104.18'
- NW cor. garage fndn. (House #7169) S 60° E 114.78'
- Top C/L hyd. N 60° E 75.23'

Signed by *Randy J. Kolehouse*
EARTH TECH

Date 10/24/97

Surveyor's Michigan License No. 25854

