

SURVEY & REMONUMENTATION

MAR 03 1998

SECTION

LAND CORNER RECORDATION CERTIFICATE
Filing Requirement of Act 74, Mich. P.A. 1970
KENT COUNTY REMONUMENTATION

For corners in

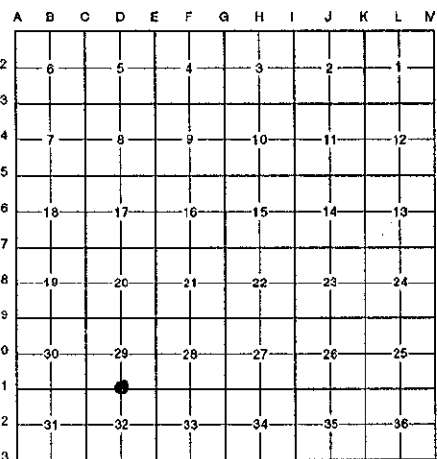
Kent (County)	Located in: Cannon Township	Corner Code #
1. Public Land Survey	T <u>8N</u> R <u>10W</u>	<u>D-11</u>
	T _____ R _____	_____
	T _____ R _____	_____
	T _____ R _____	_____
2. Property Controlling in Section	S _____ T _____ R _____	_____
	S _____ T _____ R _____	_____
3. Miscellaneous Property in Sec.	S _____ T _____ R _____	_____
	S _____ T _____ R _____	_____
4. Lot No. _____, Recorded Plat _____		
5. Private Claims _____		

STATE OF MICHIGAN
 COUNTY OF KENT
 RECEIVED FOR RECORD
 97 OCT 15 AM 8:44
 REG. OF DEEDS
Lucy Standa

10097

Register of Deeds Stamp & File Number

I, Randy Kolehouse, in a field survey on June 11 19 97, do hereby certify that under requirements of P.A. 74 Michigan P.A. of 1970, the corner points mentioned in lines 1 and 2 above were in conformance with regulations and rules therefore as required in the current manual of survey instructions of the United States Department of the Interior, Bureau of Land Management or by a decree of a Court of Law and/or that the corner points mentioned in lines 3, 4 and 5 above were in conformance with the rules of the Michigan Board of Land Surveyors or by a Decree of a Court of Law; established, re-established, monumented, re-monumented, recovered, found as expressed below:



NOTE: Not more than 4 corners, all in the same town and range, may be recorded on this certificate.

A. Description of original monument and accessories and/or subsequent restoration:

D-11	1831	G.L.O. Notes	Mullett	Set Post
	1937	Witness Map	K.C. Surveyor	Concrete Monument
	1972	L.C.R.C. #182	Williams & Works	3/4" Round Iron
	1981	L.C.R.C. #2366	Jonker Land Surveys	Fnd. 3/4" Round Iron Over Concrete Mon. / Set K.C. Monument
	1991	L.C.R.C. #6290	Chris Marschall	K.C. Monument

P.A. 345 1990 KENT COUNTY
 PEER APPROVED 6/26/97
 CHAIRMAN *Ray Huber*

This corner was originally approved by the Kent County Remonumentation Peer Group and monumented by Rob Jonker on 11/11/81 and was recorded per L.C.R.C. #2366.

B. Description of corner evidence found and/or method applied in restoring or reestablishing corner:

D-11 Found a Standard Kent County Monument on the C/L of 5 Mile Road (bit.) running East and West per L.C.R.C.'s #2366 and #6290 as set by Rob Jonker in place of 3/4" round iron he found at grade over a 4' concrete monument 12" below grade which checked L.C.R.C. #182 and the K.C. Surveyor's records.

L.C.R.C. #2366

L.C.R.C. #6290

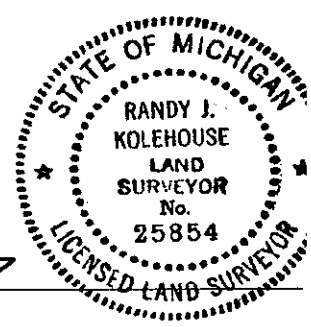
Remon. tag on NW side fe. post S45°W 34.87'	Nail & Tag NW sd. Fnc. post S 45 W 34.93' (m. 35.02')
Remon. tag on NE side 3" Cedar S36°E 33.95'	Nail & Tag NE sd. 6" Cedar S 36 E 33.72'
Remon. tag on NE side p. pole N43°E 287.85'	Nail & Tag SE sd. P.P. N 26 W 221.40' (m. 221.45')
Remon. tag on SE side p. pole N26°W 221.47'	

The selected location is accepted by me and is generally accepted by professional surveyors as the best available evidence of the position of the original corner.

C. Description of monument for corner and accessories established to perpetuate locating the position of the corner:

D-11 Standard Kent County Monument

- Nail & K.C. remon. tag on NE side fence post S 45° W 35.02'
- Nail & K.C. remon. tag on NE side 6" Cedar S 36° E 33.72'
- Nail & K.C. remon. tag on SE side P. pole N 26° W 221.45'
- Nail & K.C. remon. tag on E side 4" Apple N 10° E 62.76'



Signed by *Randy J. Kolehouse* Date 8/12/97
 EARTH TECH

Surveyor's Michigan License No. 25854